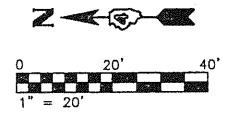


\* NOTE: IMPACT ATTENUATORS SHALL BE SUCH THAT THEY ARE EASILY RELOCATED FOR PROFILE BUILDUP AND RESURFACING OPERATIONS AND THEN RETURNED TO THEIR ORIGINAL POSITIONS AT THE END OF THE DAY.

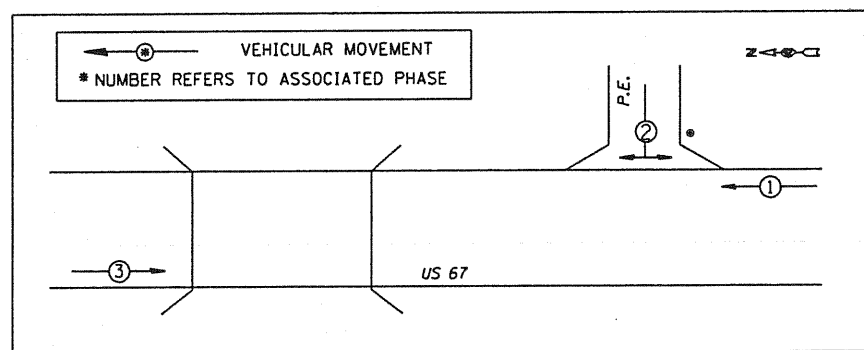


**STAGING LEGEND**

- TYPE III BARRICADE WITH FLASHING LIGHTS
- TEMPORARY CONCRETE BARRIER
- DRUM WITH STEADY BURNING LIGHTS
- DETECTOR LOOPS
- TEMPORARY RUMBLE STRIPS
- TRAFFIC SIGNAL
- DOUBLE VERTICAL PANEL
- SIGN
- GUARDRAIL MARKERS

- SUGGESTED SEQUENCE OF CONSTRUCTION:
1. USE STANDARD 701321 FOR BRIDGE, APPROACH PAVEMENT, AND CONNECTOR PAVEMENT WORK.
  2. REMOVE STAGE 2 PORTION OF THE EXISTING STRUCTURE, GUARDRAIL, PAVEMENT, AND SHOULDERS.
  3. CONSTRUCT STAGE 2 PORTION OF THE PROPOSED BRIDGE INCLUDING APPROACH PAVEMENTS, CONNECTOR PAVEMENTS, RIPRAP, GUARDRAIL, HMA SHOULDERS, BINDER COURSE, AND SURFACE COURSE.

TEMPORARY PHASE DIAGRAM



- TRAFFIC SIGNAL LEGEND
- TEMPORARY PEDESTRIAN PUSH-BUTTON
  - 3 SEC. SIGNAL HEAD W/ BACKPLATE

FILE NAME =	USER NAME = rmbrodie	DESIGNED RMB	REVISED -	<b>STATE OF ILLINOIS DEPARTMENT OF TRANSPORTATION</b>	<b>US 67 OVER CEDAR CREEK STAGING PLAN - STAGE 2 CONSTRUCTION</b>	F.A.P. RTE.	SECTION	COUNTY	TOTAL SHEETS	SHEET NO.
S:\237\2808\23780802\US67CedarCreek\CAD\CADD Sheets\0468661-sh1-staging.dgn	DRAWN BAB	REVISD -	310			(28B)BR-1	WARREN	71	20	
PLOT SCALE = 48.0021' / IN.	CHECKED RJA	REVISD -	CONTRACT NO. 68661							
PLOT DATE = 10/23/2010	DATE 09-27-2010	REVISD -	ILLINOIS FED. AID PROJECT							
SCALE:		SHEET NO. OF SHEETS		STA. 1182+50.00 TO STA. 1188+35.00						