
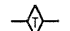
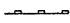


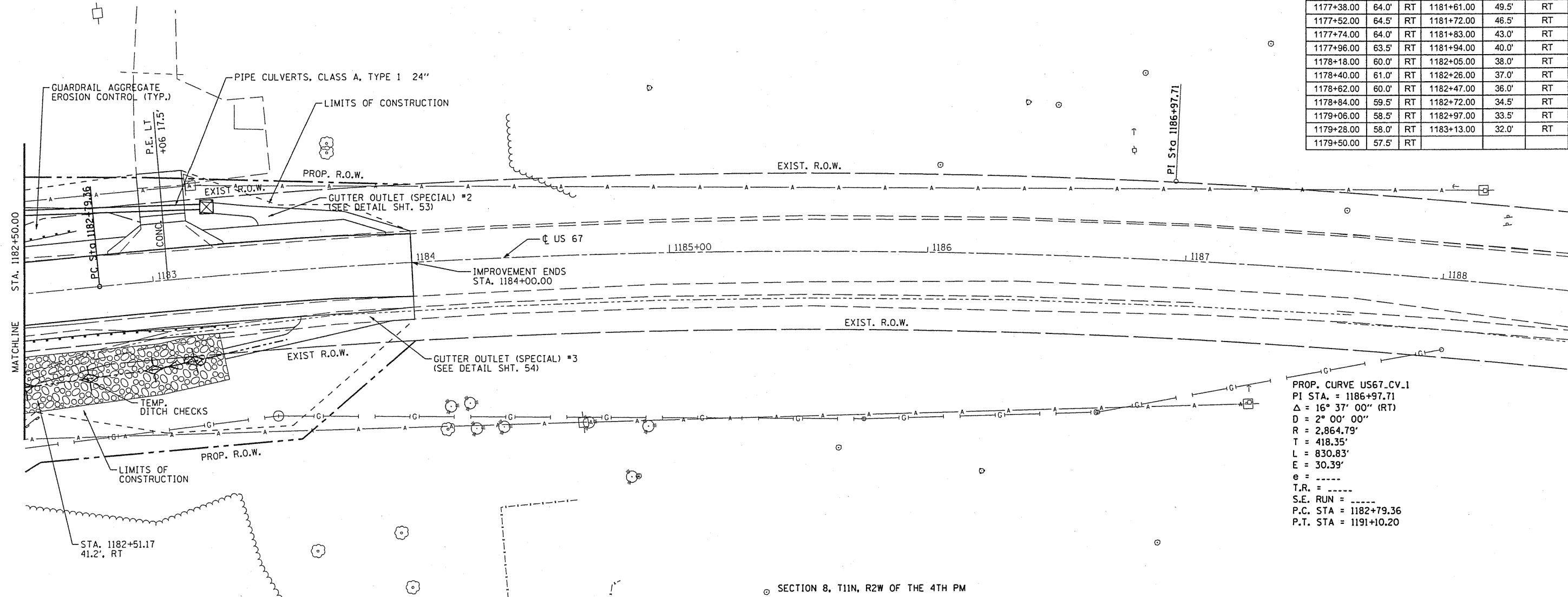


LEGEND

-  STONE RIPRAP, CLASS A4
-  TEMPORARY DITCH CHECKS
-  PERIMETER EROSION BARRIER
-  HEAVY DUTY EROSION CONTROL BLANKET
-  INLET AND PIPE PROTECTION

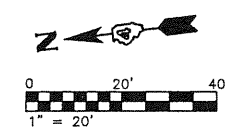
TEMPORARY DITCH CHECKS					
STATION	OFFSET		STATION	OFFSET	
1175+42.00	37.0'	RT	1180+50.00	70.5'	RT
1175+58.00	39.0'	RT	1181+00.00	73.0'	RT
1175+83.00	40.0'	RT	1181+05.00	71.0'	RT
1176+02.00	41.0'	RT	1181+10.00	69.0'	RT
1176+21.00	44.0'	RT	1181+15.00	67.0'	RT
1176+40.00	46.5'	RT	1181+20.00	65.0'	RT
1176+54.00	49.0'	RT	1181+25.00	63.0'	RT
1176+68.00	53.0'	RT	1181+30.00	61.0'	RT
1176+82.00	57.0'	RT	1181+35.00	59.0'	RT
1176+96.00	61.0'	RT	1181+40.00	57.0'	RT
1177+10.00	63.0'	RT	1181+45.00	55.0'	RT
1177+24.00	63.5'	RT	1181+50.00	53.0'	RT
1177+38.00	64.0'	RT	1181+61.00	49.5'	RT
1177+52.00	64.5'	RT	1181+72.00	46.5'	RT
1177+74.00	64.0'	RT	1181+83.00	43.0'	RT
1177+96.00	63.5'	RT	1181+94.00	40.0'	RT
1178+18.00	60.0'	RT	1182+05.00	38.0'	RT
1178+40.00	61.0'	RT	1182+26.00	37.0'	RT
1178+62.00	60.0'	RT	1182+47.00	36.0'	RT
1178+84.00	59.5'	RT	1182+72.00	34.5'	RT
1179+06.00	58.5'	RT	1182+97.00	33.5'	RT
1179+28.00	58.0'	RT	1183+13.00	32.0'	RT
1179+50.00	57.5'	RT			

SECTION 8, T11N, R2W OF THE 4TH PM



PROP. CURVE US67_CV.1
 PI STA. = 1186+97.71
 $\Delta = 16^\circ 37' 00''$ (RT)
 $D = 2^\circ 00' 00''$
 $R = 2,864.79'$
 $T = 418.35'$
 $L = 830.83'$
 $E = 30.39'$
 $e = \text{-----}$
 $T.R. = \text{-----}$
 $S.E. \text{ RUN} = \text{-----}$
 $P.C. \text{ STA} = 1182+79.36$
 $P.T. \text{ STA} = 1191+10.20$

SECTION 8, T11N, R2W OF THE 4TH PM



FILE NAME *	USER NAME = rmbredle	DESIGNED <i>RMB</i>	REVISED -	STATE OF ILLINOIS DEPARTMENT OF TRANSPORTATION	US 67 OVER CEDAR CREEK EROSION CONTROL PLAN	F.A.P. RTE.	SECTION	COUNTY	TOTAL SHEETS	SHEET NO.
S:\237\2008\23708002\US67CedarCreek\CD\CA00 Sheets\0468661-sht-eros3.dgn	DRAWN <i>BAB</i>	REVISED -	310			(28B)BR-1	WARREN	71	24	
PLOT SCALE = 40.0000' / IN.	CHECKED <i>RJA</i>	REVISED -	CONTRACT NO. 68661							
PLOT DATE = 10/23/2010	DATE <i>09-27-2010</i>	REVISED -	ILLINOIS FED. AID PROJECT							
				SCALE:	SHEET NO. OF SHEETS	STA. 1182+50.00 TO STA. 1188+50.00				