

STATE OF ILLINOIS
DEPARTMENT OF TRANSPORTATION

GENERAL NOTES

Fasteners shall be AASHTO M164 Type 1, hot dip galvanized bolts. Bolts $\frac{7}{8}$ in. ϕ , holes $\frac{15}{16}$ in. ϕ , unless otherwise noted.
Calculated weight of Structural Steel = 199,980 lbs. (Grade 50)
15,640 lbs. (Grade 36)

All new structural steel shall be galvanized. See Special Provision for "Hot Dip Galvanizing for Structural Steel."

No field welding is permitted except as specified in the contract documents. Reinforcement bars shall conform to the requirements of ASTM A 706 Gr 60. See Special Provisions.

Reinforcement bars designated (E) shall be epoxy coated. Bearing seat surfaces shall be constructed or adjusted to the designated elevations within a tolerance of $\frac{1}{8}$ inch (0.01 ft.). Adjustment shall be made either by grinding the surface or by shimming the bearings.

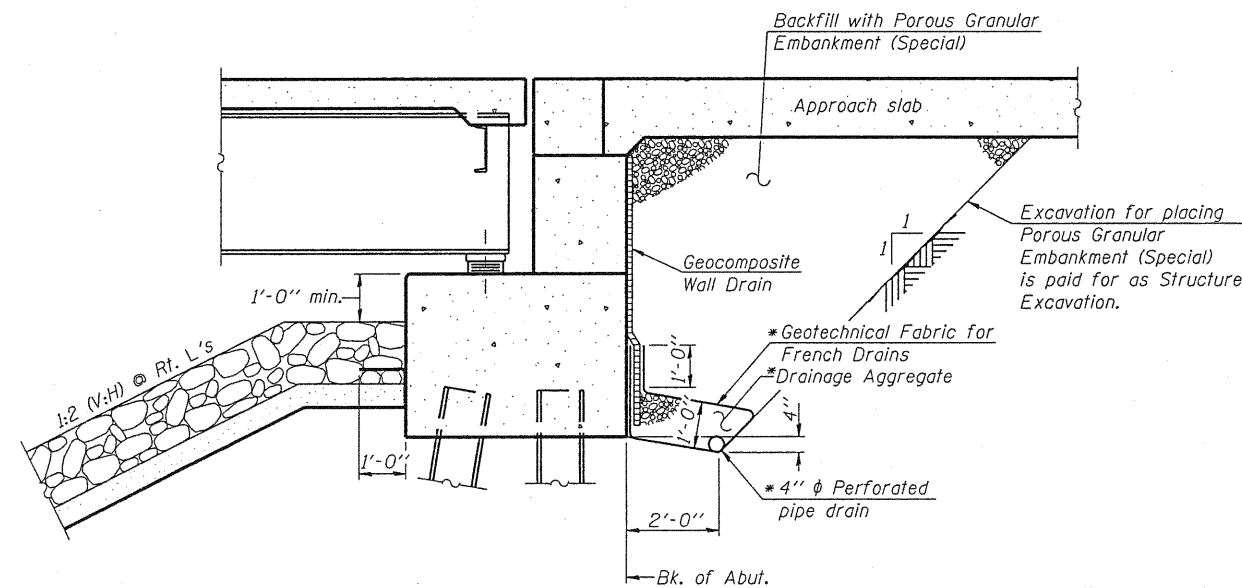
Concrete Sealer shall be applied to all exposed surfaces of the abutments and piers, including wingwalls.

Layout of slope protection system may be varied to suit ground conditions in the field as directed by the Engineer.

The Contractor is advised that the existing PPC deck beams are in a deteriorated condition with reduced load carrying capacity. It is the Contractor's responsibility to account for the condition of the beams when developing construction procedures for removal and replacement of the structure.

TOTAL BILL OF MATERIAL

| ITEM | UNIT | SUPER | SUB | TOTAL |
|---|---------|-------|-------|--------|
| Porous Granular Embankment, Special | Cu. Yd. | | 155 | 155 |
| Stone Riprap, Class A4 | Sq. Yd. | | 1945 | 1945 |
| Filter Fabric | Sq. Yd. | | 1945 | 1945 |
| Removal of Existing Structures | Each | | | 1 |
| Structure Excavation | Cu. Yd. | | 389 | 389 |
| Concrete Structures | Cu. Yd. | | 369.4 | 369.4 |
| Concrete Superstructure | Cu. Yd. | 349.8 | | 349.8 |
| Bridge Deck Grooving | Sq. Yd. | 1094 | | 1094 |
| Concrete Encasement | Cu. Yd. | | 16.6 | 16.6 |
| Protective Coat | Sq. Yd. | 1249 | | 1249 |
| Furnishing and Erecting Structural Steel | L. Sum | 1 | | 1 |
| Stud Shear Connectors | Each | 4644 | | 4644 |
| Reinforcement Bars, Epoxy Coated | Pound | 87720 | 27670 | 115390 |
| Bar Splicers | Each | 844 | 314 | 1158 |
| Steel Railing, Type SM | Foot | 528 | | 528 |
| Furnishing Steel Piles HP12x53 | Foot | | 504 | 504 |
| Furnishing Steel Piles HP14x73 | Foot | | 860 | 860 |
| Driving Piles | Foot | | 504 | 504 |
| Test Pile Steel HP12x53 | Each | | 2 | 2 |
| Pile Shoes | Each | | 16 | 16 |
| Name Plates | Each | 1 | | 1 |
| Preformed Joint Strip Seal | Foot | 94 | | 94 |
| Elastomeric Bearing Assembly, Type I | Each | 12 | | 12 |
| Anchor Bolts, 1" | Each | | 48 | 48 |
| Concrete Sealer | Sq. Ft. | | 7219 | 7219 |
| Geocomposite Wall Drain | Sq. Yd. | | 75 | 75 |
| Pipe Underdrains for Structures 4" | Foot | | 159 | 159 |
| Temporary Soil Retention System | Sq. Ft. | | 903 | 903 |
| Underwater Structure Excavation Protection - Location 1 | Each | | 1 | 1 |
| Underwater Structure Excavation Protection - Location 2 | Each | | 1 | 1 |
| Asbestos Bearing Pad Removal | Each | | | 52 |
| Setting Piles in Rock | Each | | 20 | 20 |



**SECTION THRU PILE SUPPORTED
STUB ABUTMENT**
(Horiz. dim. @ Rt. L's)

*Included in the cost of Pipe Underdrains for Structures.

Note:
All drainage system components shall extend to 2'-0" from the end of each wingwall except an outlet pipe shall extend until intersecting with the side slopes. The pipes shall drain into concrete headwalls. (See Article 601.05 of the Standard Specifications and Highway Standard 601101).



| |
|----------------|
| DESIGNED - BAS |
| CHECKED - KEF |
| DRAWN - SGM |
| CHECKED - BAS |

**GENERAL DATA
STRUCTURE NO. 094-0051**

| | | | | | |
|--------------------------------|-------------|-----------|--------------------|--------------|-----------|
| SHEET NO. 2 27 SHEETS | F.A.P. RTE. | SECTION | COUNTY | TOTAL SHEETS | SHEET NO. |
| | 310 | (28B)BR-1 | WARREN | 71 | 26 |
| FED. ROAD DIST. NO. - ILLINOIS | | | FED. AID PROJECT | | |
| | | | CONTRACT NO. 68661 | | |