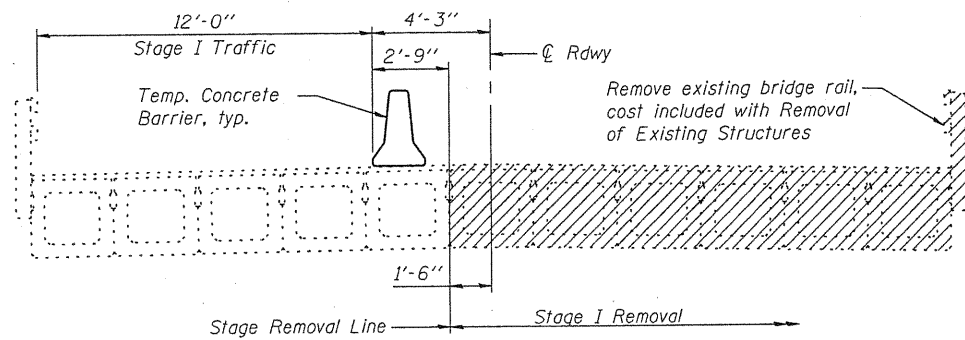
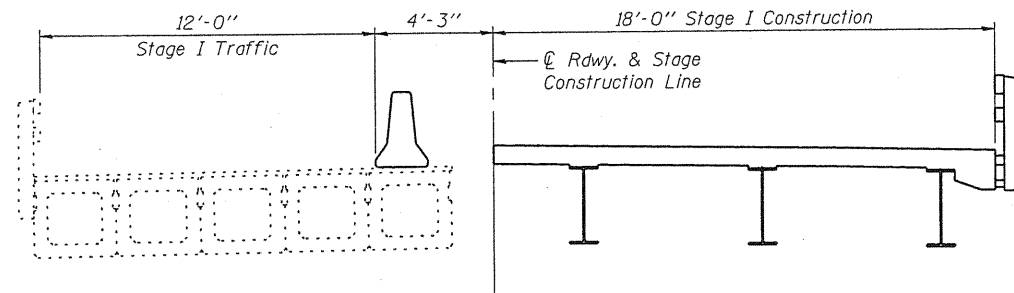


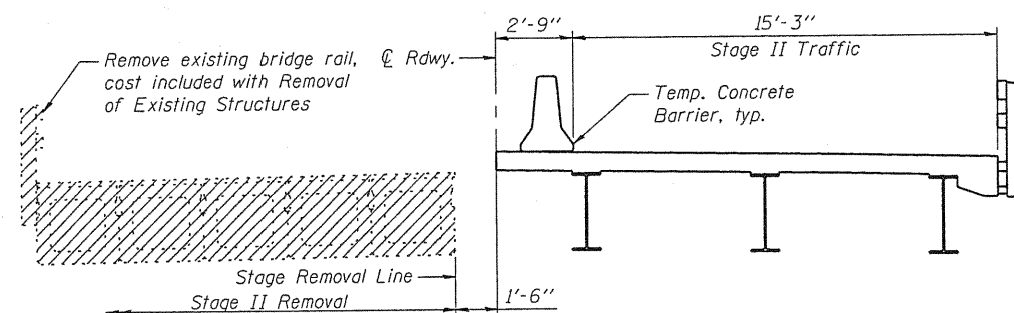
STATE OF ILLINOIS
DEPARTMENT OF TRANSPORTATION



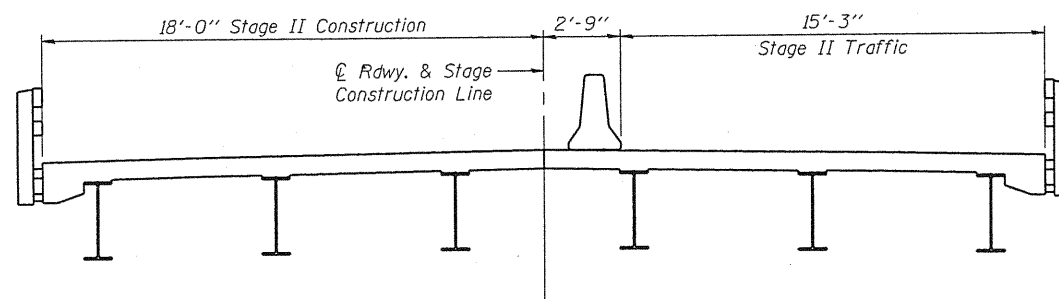
STAGE I REMOVAL
(Looking South)



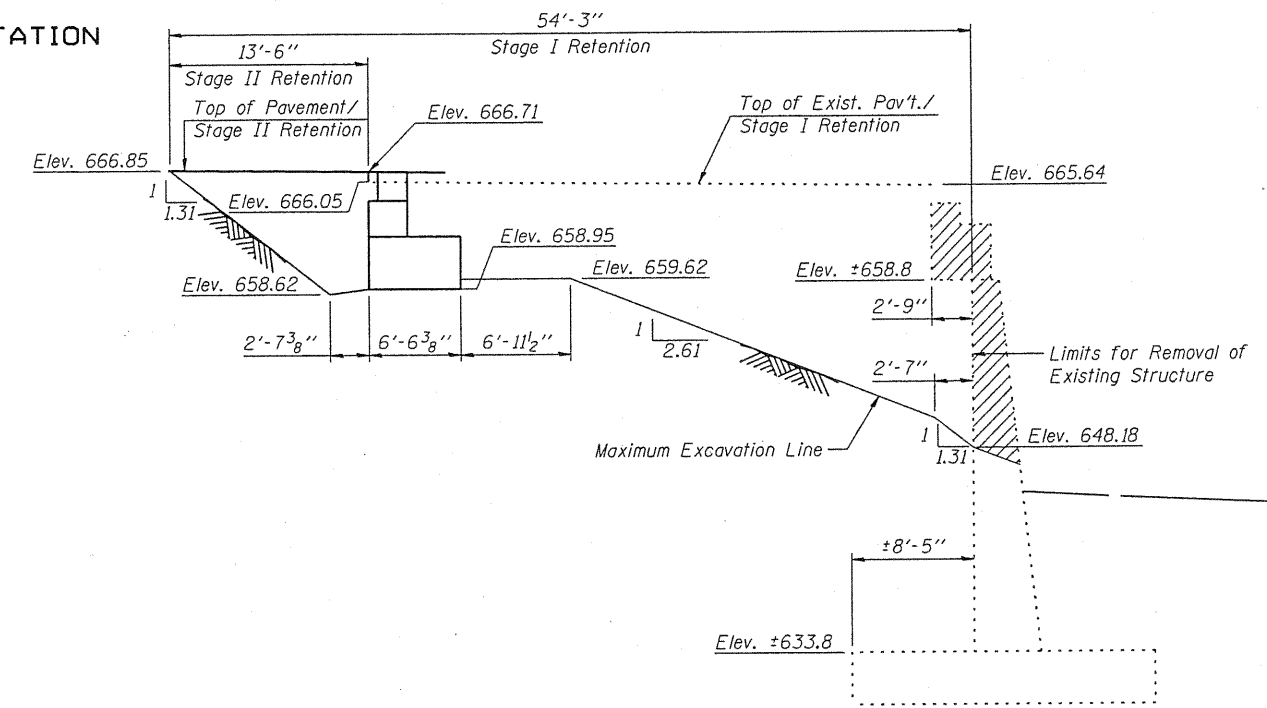
STAGE I CONSTRUCTION
(Looking South)



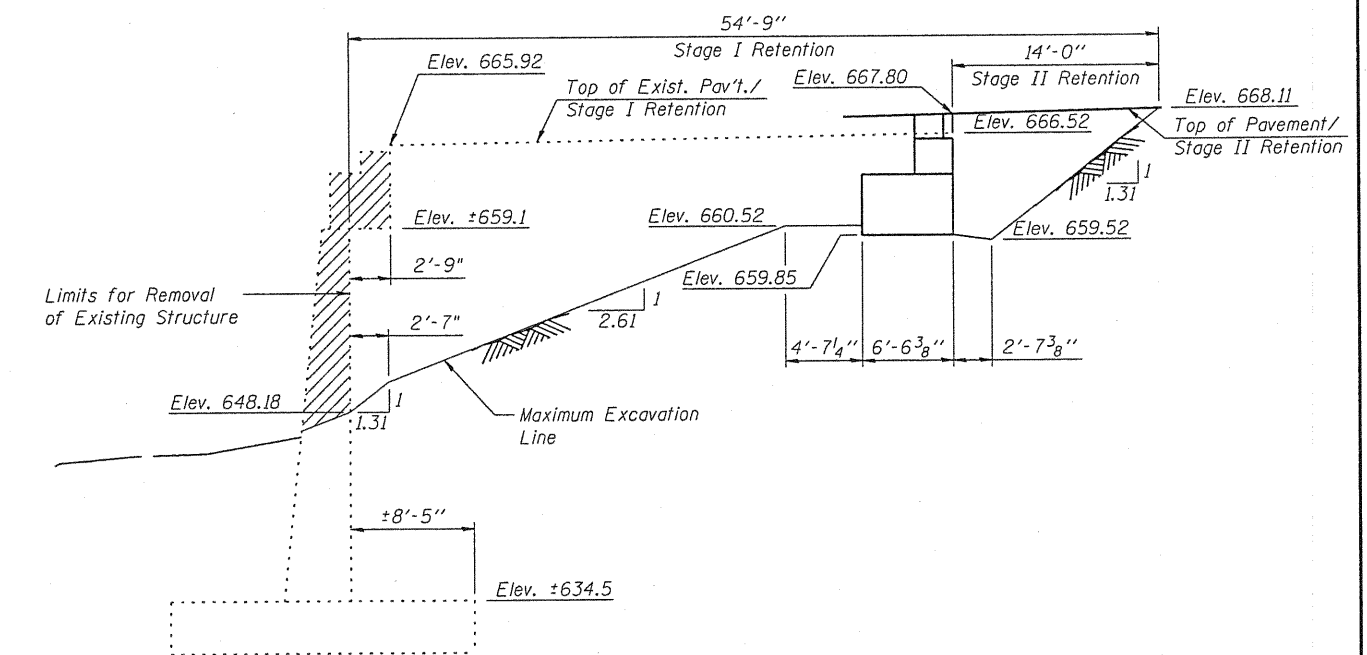
STAGE II REMOVAL
(Looking South)



STAGE II CONSTRUCTION
(Looking South)



NORTH ABUTMENT
(Looking East)



SOUTH ABUTMENT
(Looking East)

BILL OF MATERIAL

| Item | Unit | Total |
|---------------------------------|---------|-------|
| Temporary Soil Retention System | Sq. Ft. | 903 |

TEMPORARY SOIL RETENTION SYSTEM

STAGING DETAILS
STRUCTURE NO. 094-0051

Notes:

Horizontal dimensions are measured parallel to \varnothing roadway.
A cantilevered sheet piling design does not appear feasible and additional members or other retention systems may be necessary.
The Contractor shall submit a temporary soil retention system design including plan details and calculations for review and acceptance by the Engineer.

Staging Notes:

Hatched areas indicate Removal of Existing Structures.
For quantity and location of Temporary Concrete Barrier, see Roadway Plans. See sheet 4 of 27 for anchorage to bridge deck.



| |
|----------------|
| DESIGNED - BAS |
| CHECKED - KEF |
| DRAWN - SGM |
| CHECKED - BAS |

| | | | | | |
|---|-------------|-----------|--------|--------------|-----------|
| SHEET NO. 3 27 SHEETS | F.A.P. RTE. | SECTION | COUNTY | TOTAL SHEETS | SHEET NO. |
| | 310 | (28B)BR-1 | WARREN | 71 | 27 |
| CONTRACT NO. 68661 | | | | | |
| FED. ROAD DIST. NO. ILLINOIS FED. AID PROJECT | | | | | |