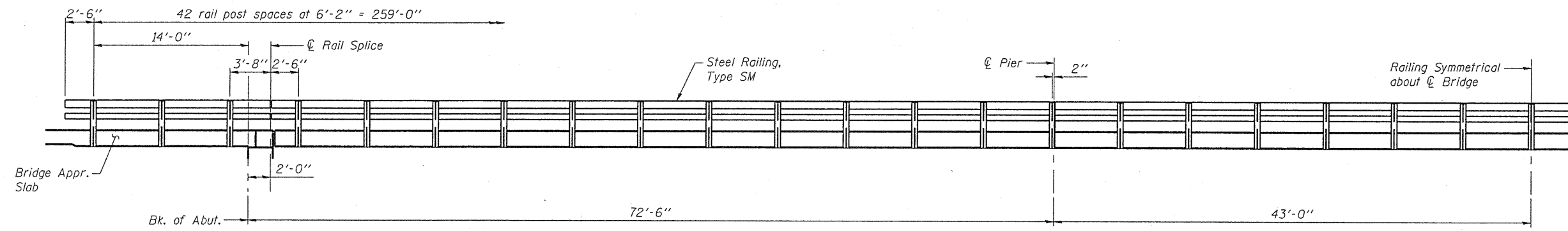


STATE OF ILLINOIS
DEPARTMENT OF TRANSPORTATION

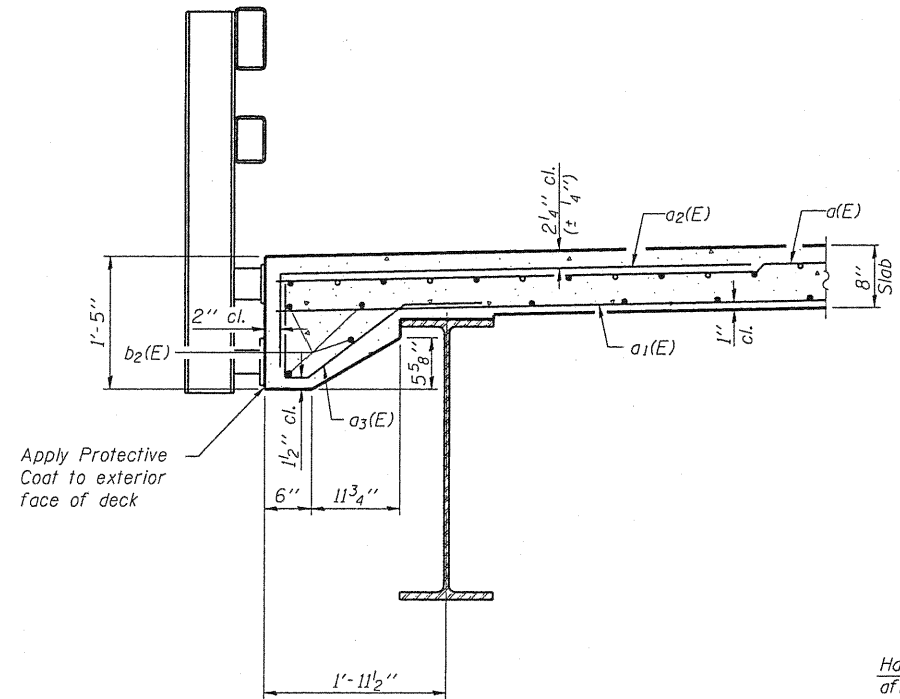


Note:
Dimensions shown are along edge of bridge deck.
For details of steel railing, see Sheet 13 of 27.

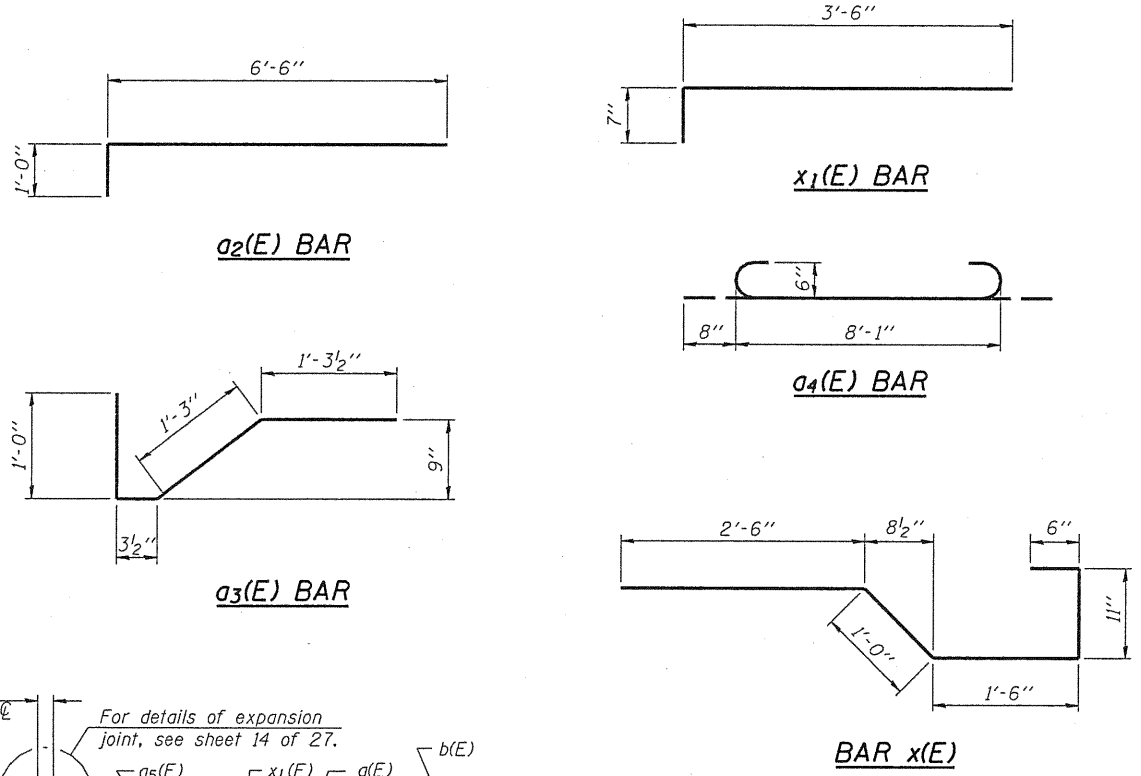
BRIDGE RAILING ELEVATION
(Looking toward bridge)

**SUPERSTRUCTURE
BILL OF MATERIAL**

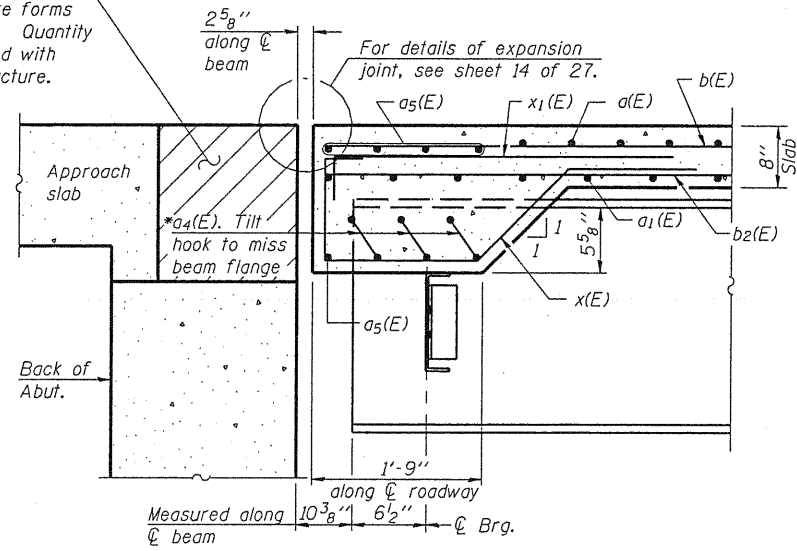
Bar	No.	Size	Length	Shape
a(E)	832	#5	17'-8"	—
a ₁ (E)	540	#5	17'-8"	—
a ₂ (E)	832	#6	7'-6"	—
a ₃ (E)	540	#5	3'-10"	—
a ₄ (E)	24	#6	9'-5"	—
a ₅ (E)	20	#6	23'-1"	—
b(E)	324	#5	27'-3"	—
b ₁ (E)	72	#6	45'-9"	—
b ₂ (E)	380	#5	24'-10"	—
x(E)	72	#5	6'-5"	—
x ₁ (E)	12	#5	4'-1"	—
Reinforcement Bars, Epoxy Coated			Pound	62380
Concrete Superstructure			Cu. Yd.	235.2



SECTION THRU EDGE OF DECK



Hatched area to be poured after superstructure forms have been removed. Quantity of concrete included with Concrete Superstructure.



SECTION A-A

* 3-#6 a₄(E) bars at 6" cts., typ. between beams except at stage construction joint. See Sheet 25 of 27 for bar splicers at stage joint.

**SUPERSTRUCTURE DETAILS
STRUCTURE NO. 094-0051**

DESIGNED - BAS
CHECKED - KEF
DRAWN - SGM
CHECKED - BAS

Note:
x(E) and x₁(E) bars shall be placed parallel to the beams. Spacing for these bars is given perpendicular to \bar{C} Rdwy.

SHEET NO. 10 27 SHEETS	F.A.P. RTE.	SECTION	COUNTY	TOTAL SHEETS	SHEET NO.
	310	(28B)BR-1	WARREN	71	34
CONTRACT NO. 68661					
FED. ROAD DIST. NO. - ILLINOIS FED. AID PROJECT					

