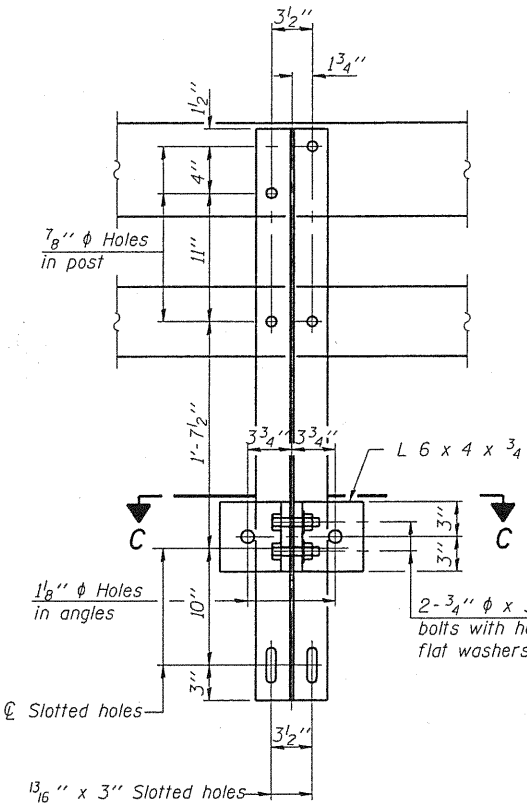
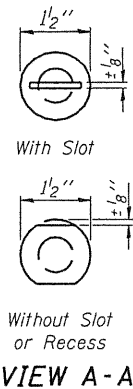
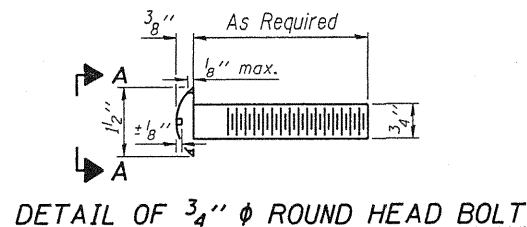
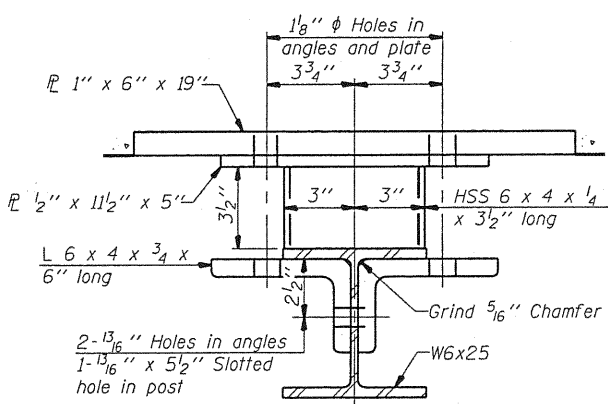


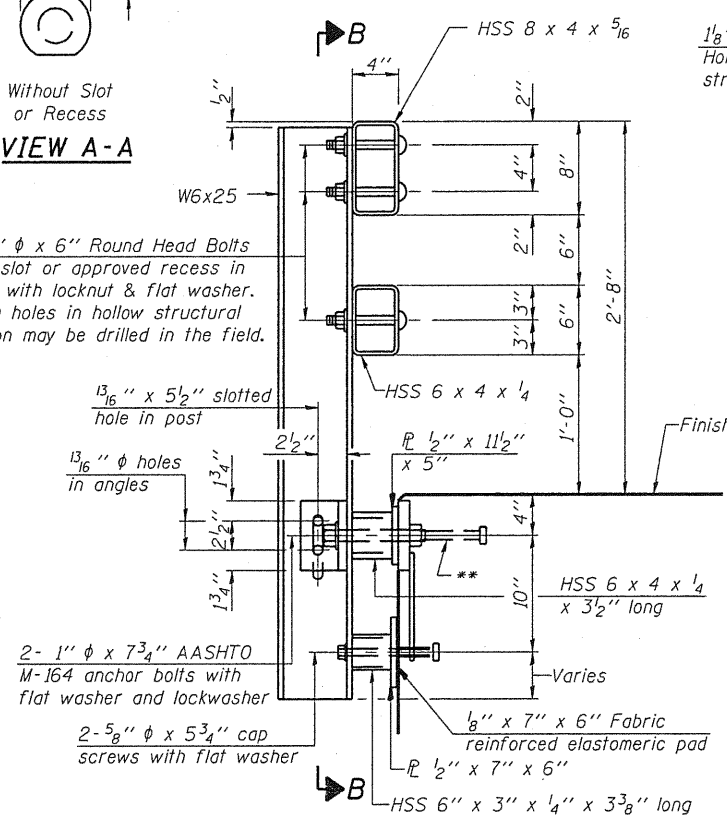
STATE OF ILLINOIS
DEPARTMENT OF TRANSPORTATION



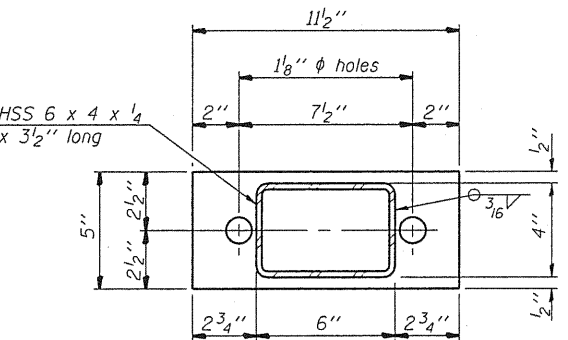
SECTION B-B



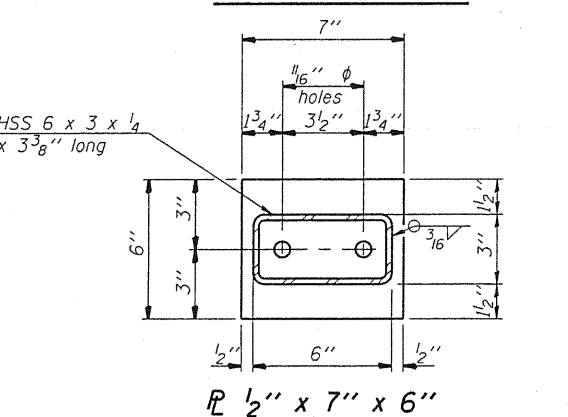
SECTION C-C



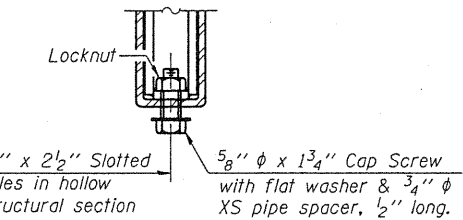
SECTION AT RAIL POST



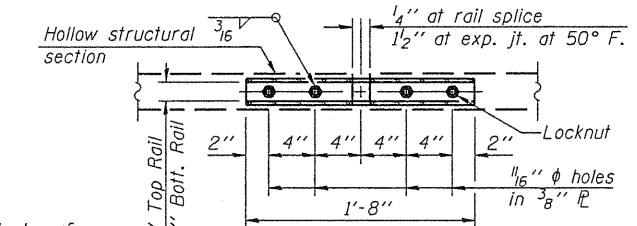
SECTION AT RAIL POST



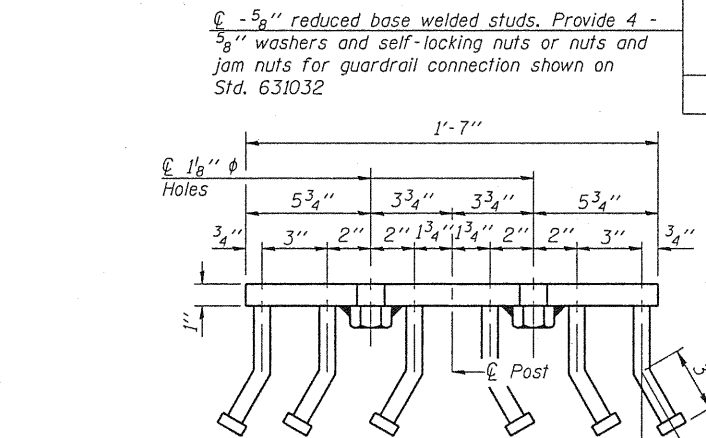
SECTION AT RAIL POST



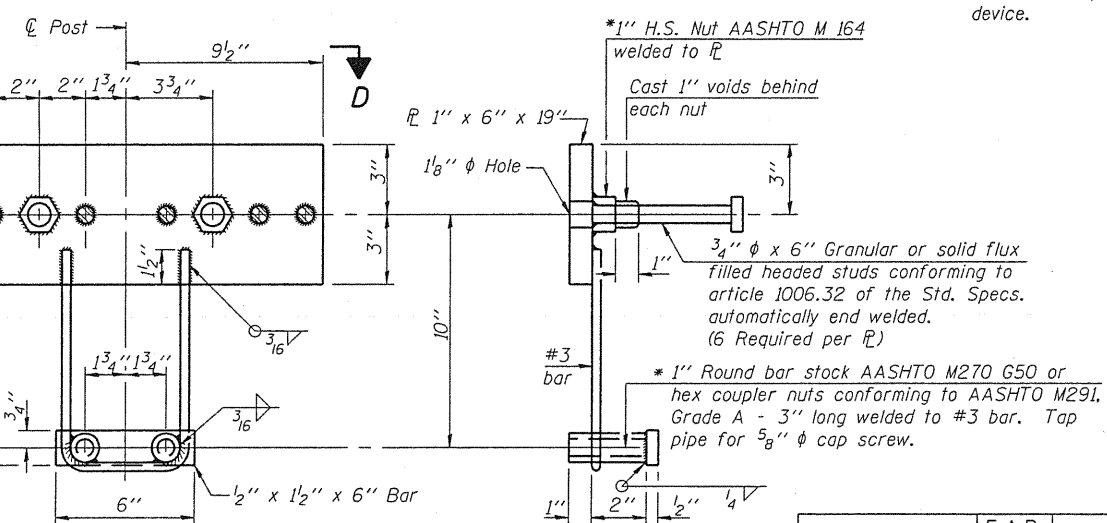
RAIL SPLICE CONNECTION
AT EXPANSION JT.



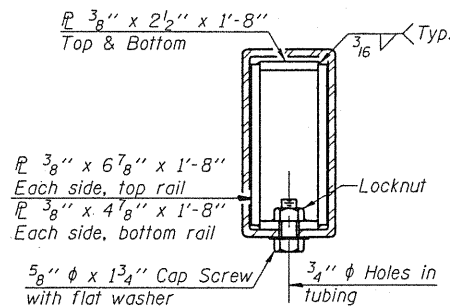
PLAN-BOTT. SPLICE
TYPICAL



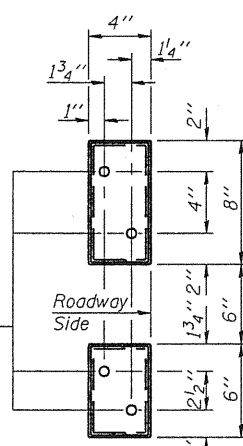
VIEW D-D



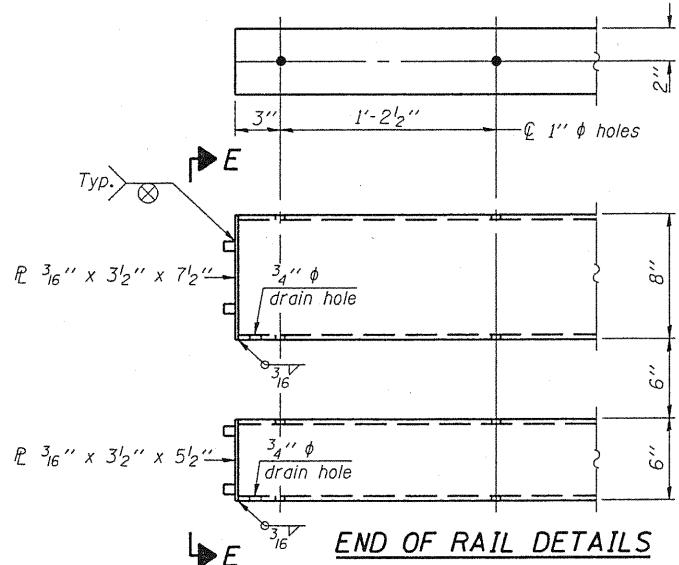
ANCHOR DEVICE



SECTION AT
RAIL SPLICE



VIEW E-E



END OF RAIL DETAILS

Notes:
All field drilled holes shall be coated with an approved zinc rich paint before erection.
For multi-span bridges, sufficient 1/4\"/>

BILL OF MATERIAL

Item	Unit	Quantity
Steel Railing, Type SM	Foot	528

STEEL RAILING, TYPE SM
STRUCTURE NO. 094-0051

MAHRE & STUTZ, INC.
ENGINEERS SURVEYORS

DESIGNED - BAS
CHECKED - KEF
DRAWN - SGM
CHECKED - BAS

SHEET NO. 13 27 SHEETS	F.A.P. RTE.	SECTION	COUNTY	TOTAL SHEETS	SHEET NO.
	310	(28B)BR-1	WARREN	71	37
FED. ROAD DIST. NO. ILLINOIS			CONTRACT NO. 68661		
FED. AID PROJECT					

*Threaded areas shall be plugged or blocked off during casting of beam. Galvanized after fabrication.