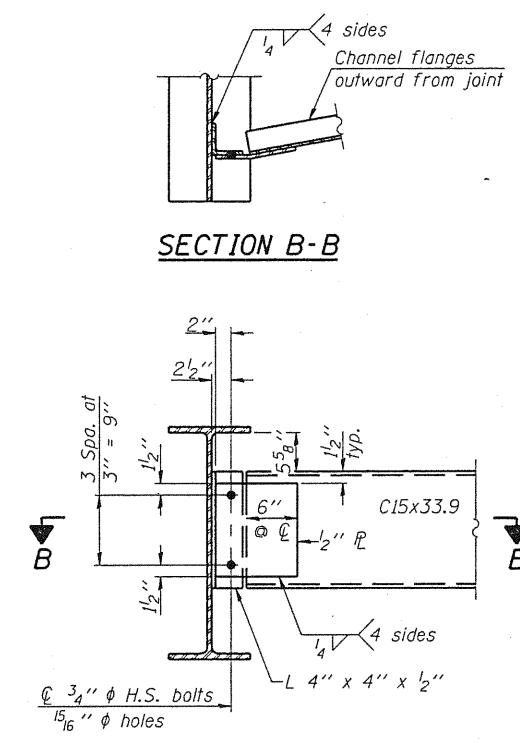
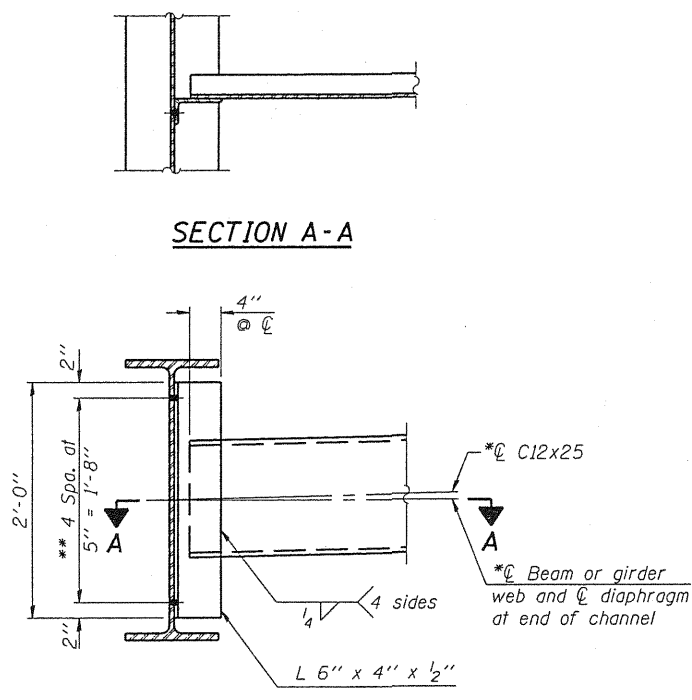
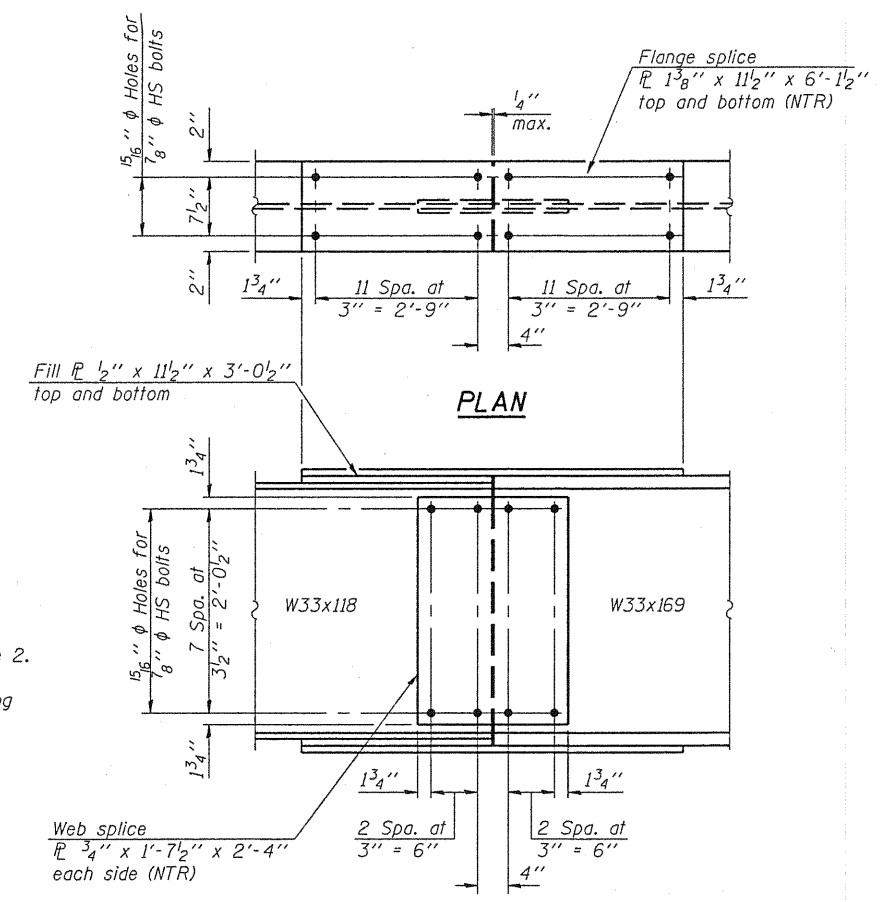


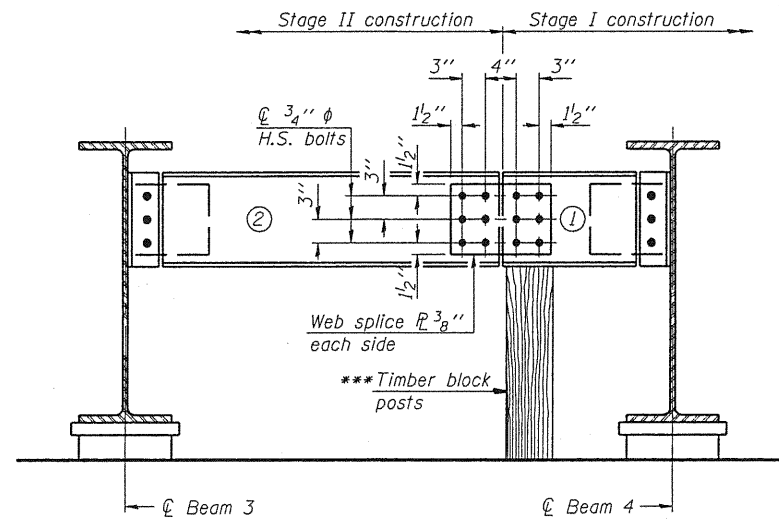
STATE OF ILLINOIS  
DEPARTMENT OF TRANSPORTATION



Notes:  
Splice plates, except for fill plates, shall conform to the requirements of AASHTO M 270 Grade 50.  
Load carrying components designated "NTR" shall conform to the Supplemental Requirements for Notch Toughness, Zone 2.  
All new structural steel shall be hot dip galvanized in accordance with the Special Provision for "Hot Dip Galvanizing for Structural Steel."



**SPLICE DETAIL**  
(24 Required)



\*\*\* Cost of Timber Block Posts is included with Structural Steel.

**END DIAPHRAGM**  
**END DIAPHRAGM STAGE**  
**CONSTRUCTION SEQUENCE**

- 1.) Order diaphragm in two sections.
- 2.) Attach section ① of diaphragm to beam
- 3.) Place timber block posts between section ① of diaphragm and abutment bearing section.
- 4.) Attach section ② of diaphragm to both beam 3 and section ① of diaphragm during stage II construction with splice plates.
- 5.) Remove timber block posts.

**STRUCTURAL STEEL DETAILS**  
**STRUCTURE NO. 094-0051**

DESIGNED - BAS
CHECKED - KEF
DRAWN - SGM
CHECKED - BAS

SHEET NO. 16	F.A.P. RTE.	SECTION	COUNTY	TOTAL SHEETS	SHEET NO.
	310	(28B)BR-1	WARREN	71	40
27 SHEETS	CONTRACT NO. 68661				
FED. ROAD DIST. NO. - ILLINOIS FED. AID PROJECT					