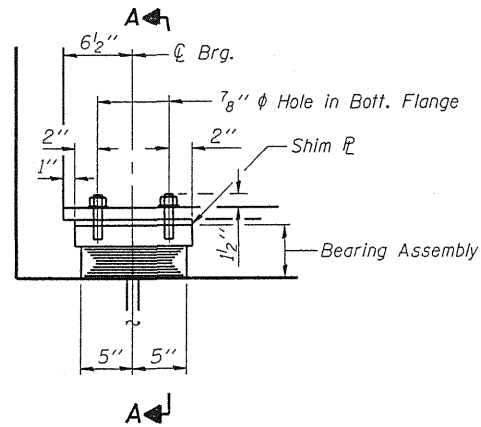
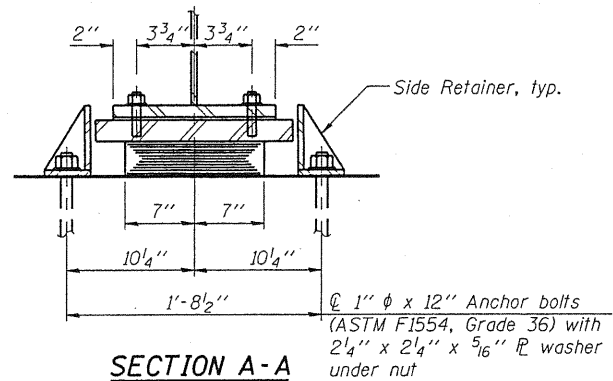


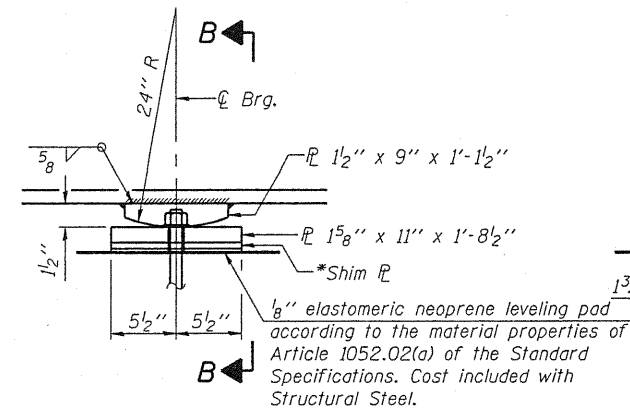
STATE OF ILLINOIS
DEPARTMENT OF TRANSPORTATION



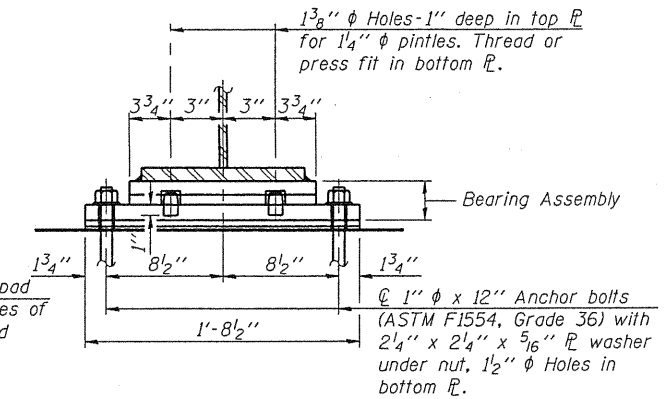
ELEVATION



SECTION A-A



ELEVATION



SECTION B-B

TYPE I ELASTOMERIC EXP. BRG. AT ABUTMENTS

Notes:

Anchor bolts shall be ASTM F1554 all-thread (or an Engineer-approved alternate material) of the grade(s) and diameter(s) specified. ASTM A307 Grade C anchor bolts may be used in lieu of ASTM F1554 Grade 36 (Fy=36ksi). The corresponding specified grade of AASHTO M314 anchor bolts may be used in lieu of ASTM F1554.

Anchor bolts at fixed bearings may be either cast in place or installed in holes drilled after the supported member is in place.

Anchor bolts for side retainers may be cast in place or installed in holes drilled before or after members are in place.

Drilled and set anchor bolts shall be installed according to Article 521.06 of the Standard Specifications.

Side retainers and other steel members required for the bearing assembly shall be included in the cost of Elastomeric Bearing Assembly, Type I.

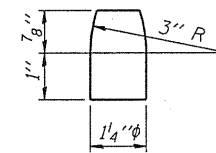
Two 1/8 inch adjusting shims shall be provided for each bearing in addition to all other plates or shims and placed as shown on bearing details.

The structural steel plates of the Bearing Assembly shall conform to the requirements of AASHTO M 270 Grade 50.

All new structural steel shall be hot dip galvanized in accordance with the Special Provision for "Hot Dip Galvanizing for Structural Steel."

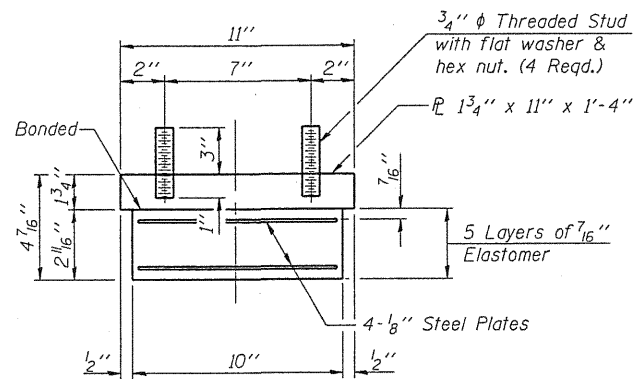
FIXED BEARING AT PIERS

(12 required)



PINTLE

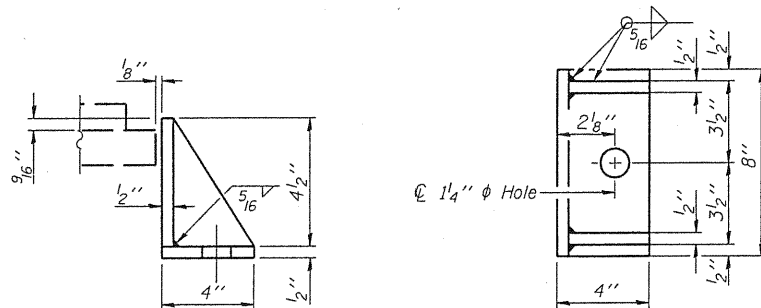
*1 1/4" x 11" x 1 1/2" Shim Plate required under Beam No. 5 and 6 at Pier 2.



BEARING ASSEMBLY

Note:

Shim plates shall not be placed under Bearing Assembly.



SIDE RETAINER

Equivalent rolled angle with stiffeners will be allowed in lieu of welded plates.



DESIGNED - BAS
CHECKED - KEF
DRAWN - SGM
CHECKED - BAS

BILL OF MATERIAL

Item	Unit	Total
Elastomeric Bearing Assembly, Type I	Each	12
Anchor Bolts, 1"	Each	48

BEARING DETAILS
STRUCTURE NO. 094-0051

SHEET NO. 17 27 SHEETS	F.A.P. RTE.	SECTION	COUNTY	TOTAL SHEETS	SHEET NO.
	310	(28B)BR-1	WARREN	71	41
FED. ROAD DIST. NO. - ILLINOIS			FED. AID PROJECT		
			CONTRACT NO. 68661		