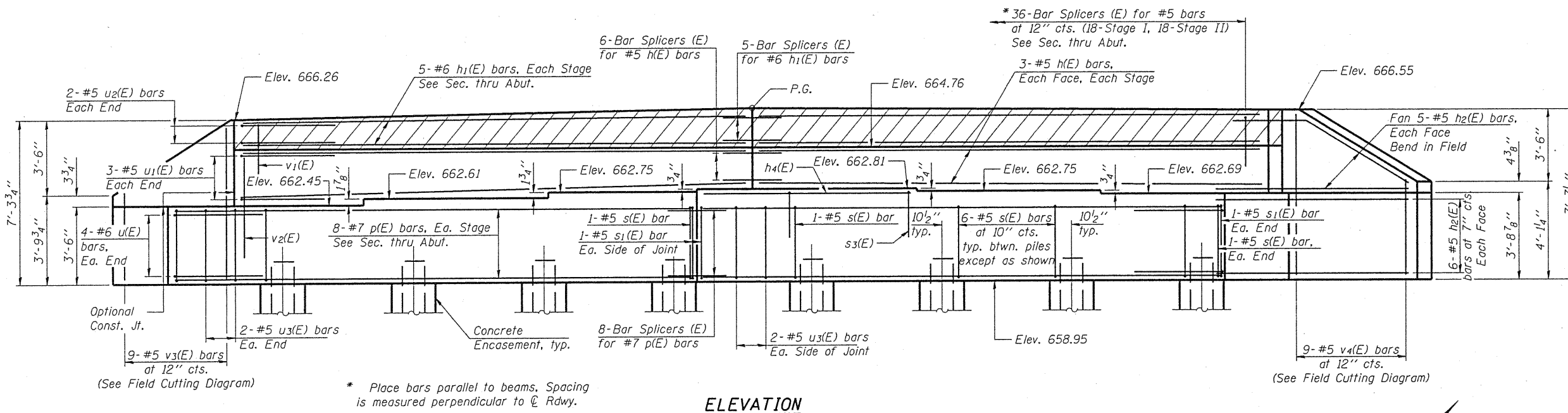


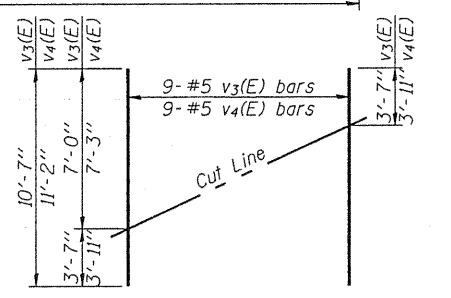
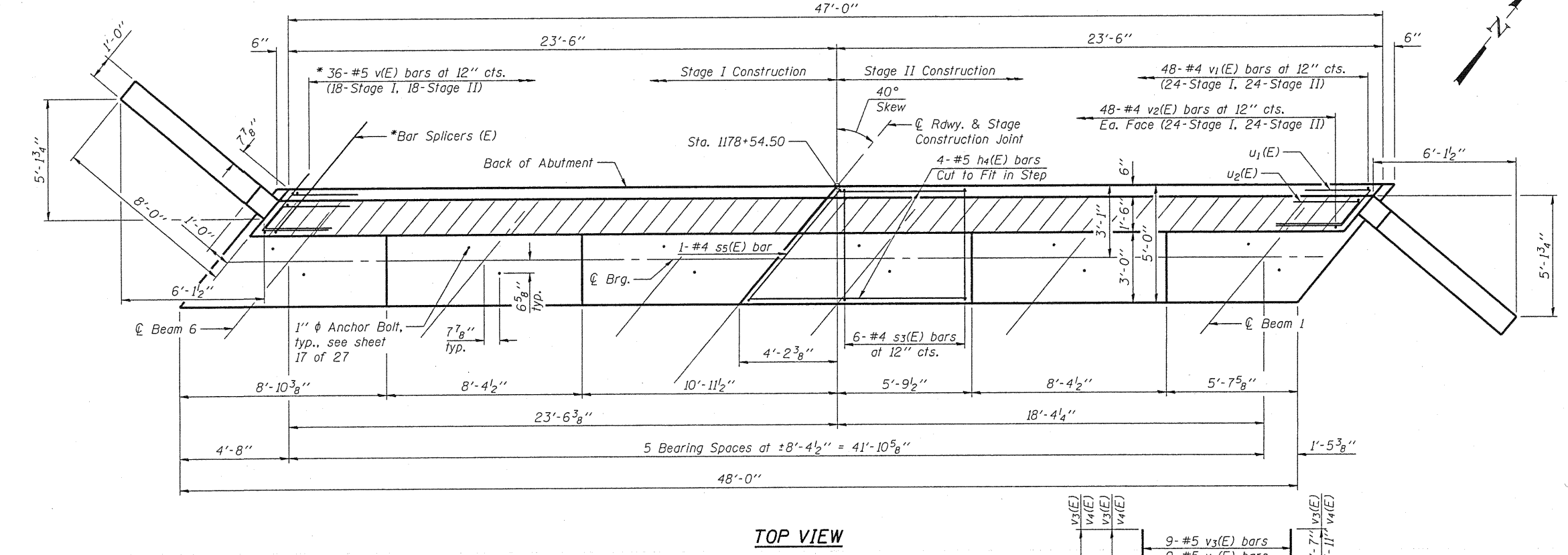
STATE OF ILLINOIS
DEPARTMENT OF TRANSPORTATION



**NORTH ABUTMENT
BILL OF MATERIAL**

Bar	No.	Size	Length	Shape
h(E)	12	#5	23'-1"	—
h ₁ (E)	10	#6	23'-1"	—
h ₂ (E)	44	#5	10'-2"	—
h ₄ (E)	4	#5	9'-8"	—
p(E)	16	#7	23'-6"	—
s(E)	40	#5	16'-7"	□
s ₁ (E)	4	#5	19'-5"	□
s ₃ (E)	6	#4	8'-2"	□
s ₅ (E)	1	#4	9'-7"	□
u(E)	8	#6	12'-7"	—
u ₁ (E)	6	#5	7'-10"	—
u ₂ (E)	4	#5	7'-2"	—
u ₃ (E)	8	#5	12'-6"	—
v(E)	36	#5	3'-11"	—
v ₁ (E)	48	#4	3'-2"	—
v ₂ (E)	96	#4	4'-10"	—
v ₃ (E)	9	#5	10'-7"	—
v ₄ (E)	9	#5	11'-2"	—
Structure Excavation		Cu. Yd.	166	
Concrete Structures		Cu. Yd.	43.8	
Reinforcement Bars, Epoxy Coated		Pound	3820	
Furnishing Steel Piles HPI2x53		Foot	238	
Driving Piles		Foot	238	
Test Pile Steel HPI2x53		Each	1	
Pile Shoes		Each	8	
Concrete Encasement		Cu. Yd.	2.8	
Concrete Sealer		Sq. Ft.	658	

For details of Bar Splicers, see sheet 25 of 27.
For details of piles and Concrete Encasement, see sheet 24 of 27.



MAUREN STUTZ, INC.
ENGINEERS SURVEYORS

DESIGNED - BAS
CHECKED - KEF
DRAWN - SGM
CHECKED - BAS

PILE DATA

Type: Steel-HP12x53 with pile shoes
Nominal Required Bearing: 419 kips
Factored Resistance Available: 230 kips
Est. Length: 34 feet
No. Production Piles: 7
No. Test Piles: 1

**NORTH ABUTMENT
STRUCTURE NO. 094-0051**

SHEET NO. 18	F.A.P. RTE. 310	SECTION (28B)BR-1	COUNTY WARREN	TOTAL SHEETS 71	SHEET NO. 42
27 SHEETS	CONTRACT NO. 68661		FED. ROAD DIST. NO. ILLINOIS FED. AID PROJECT		