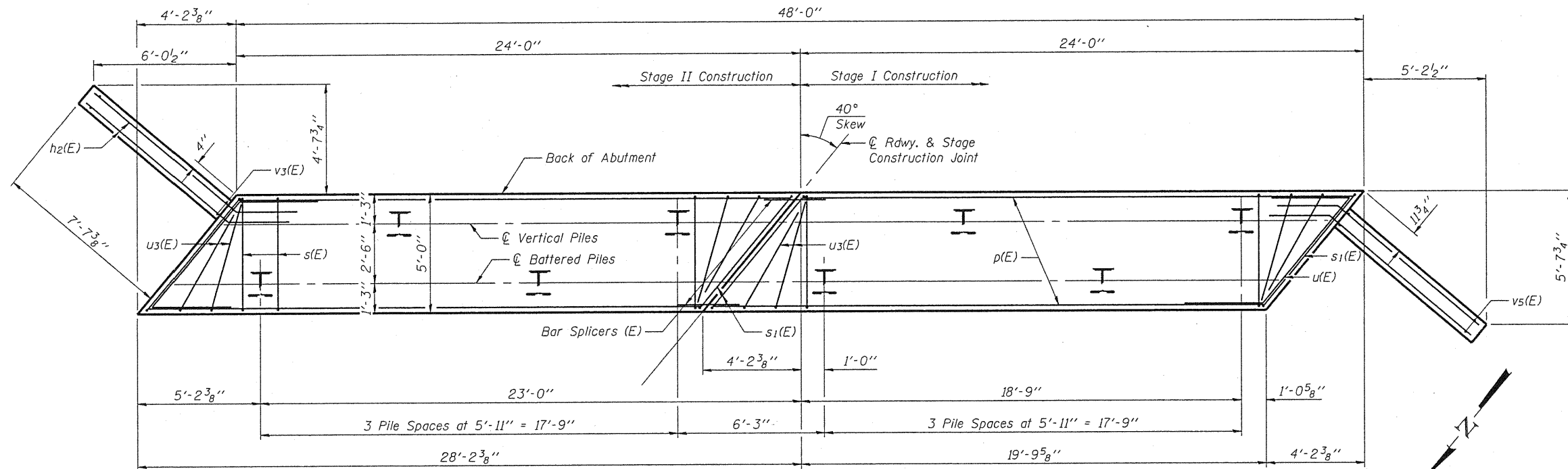
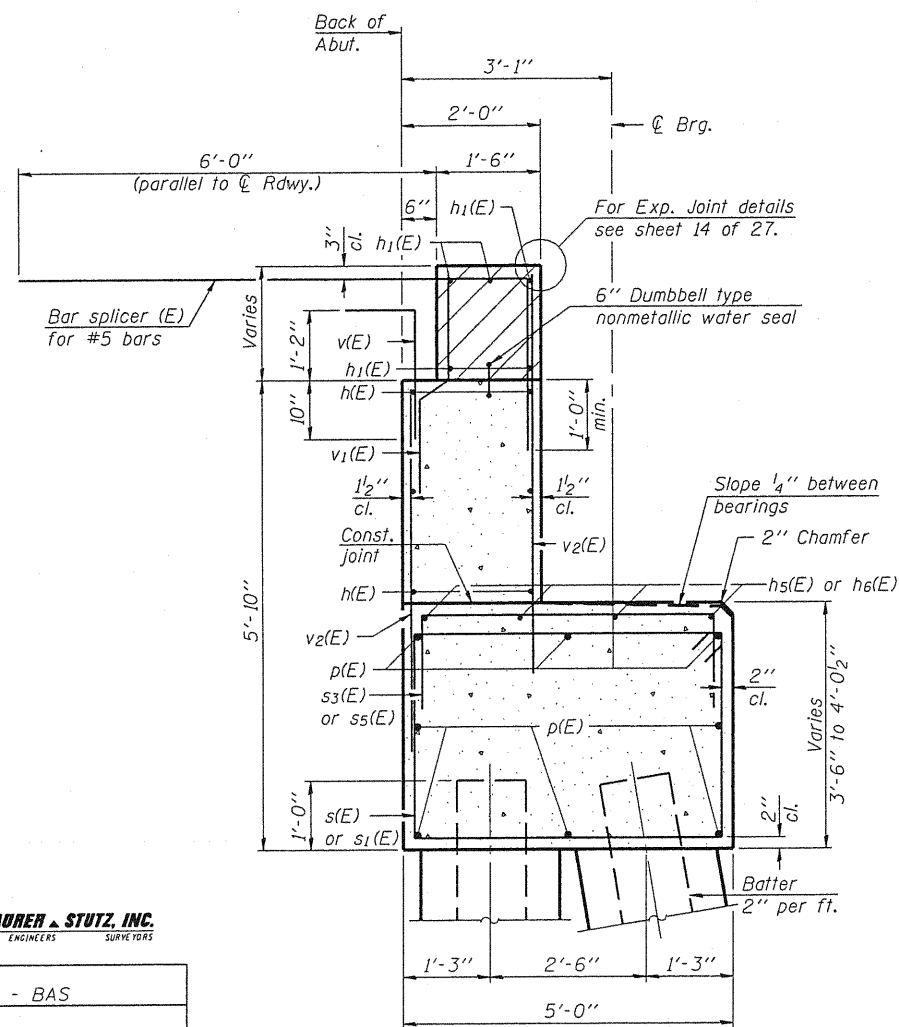


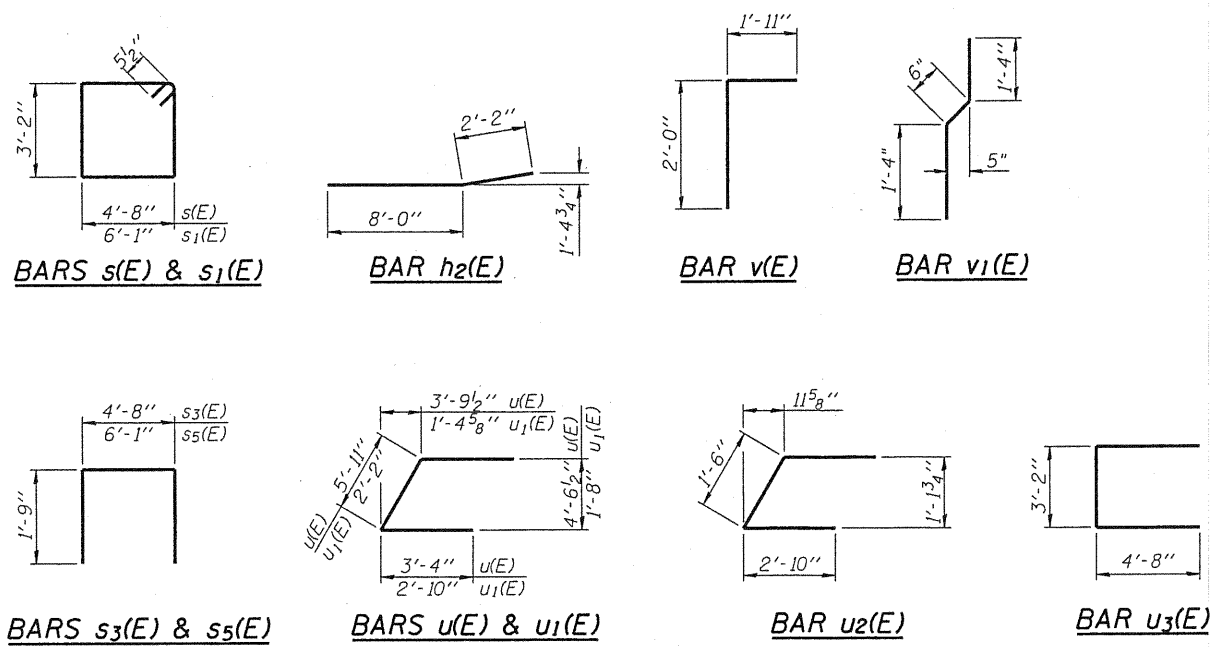
STATE OF ILLINOIS  
DEPARTMENT OF TRANSPORTATION  
48'-0"



PLAN - PILE CAP



SEC. THRU ABUT.



Notes:  
Hatched area to be poured after superstructure false work has been removed. Quantity of concrete included with Concrete Superstructure. Space reinforcement in cap to miss anchor bolts. Pour steps monolithically with cap. For Concrete Encasement details, see sheet 24 of 27.

**MADDER & STUTZ, INC.**  
ENGINEERS SURVEYORS

DESIGNED - BAS
CHECKED - KEF
DRAWN - SGM
CHECKED - BAS

**SOUTH ABUTMENT  
STRUCTURE NO. 094-0051**

SHEET NO. 21 27 SHEETS	F.A.P. RTE. 310	SECTION (28B)BR-1	COUNTY WARREN	TOTAL SHEETS 71	SHEET NO. 45
	CONTRACT NO. 68661			FED. ROAD DIST. NO. ILLINOIS FED. AID PROJECT	