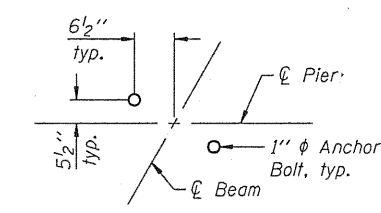
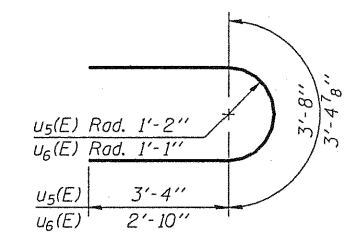
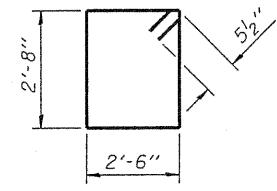
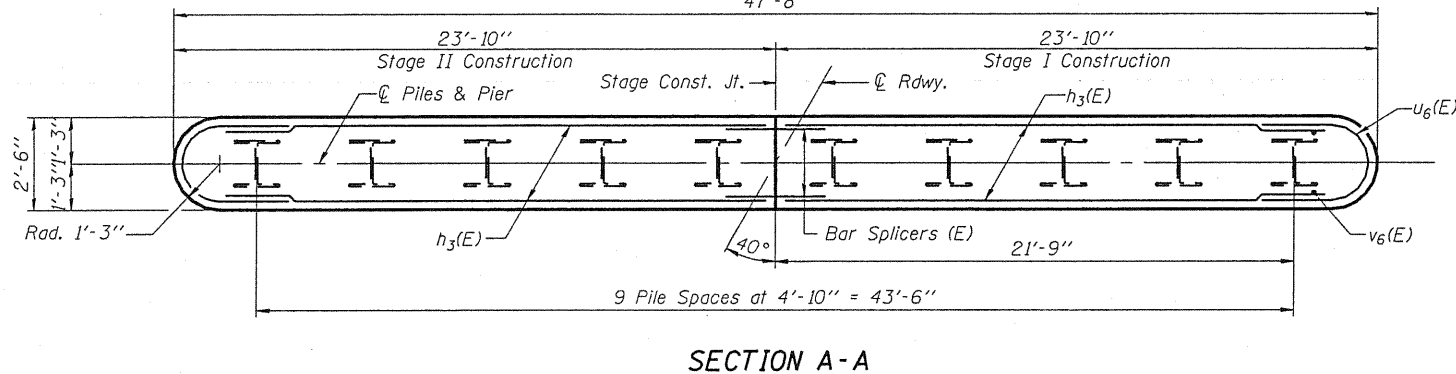
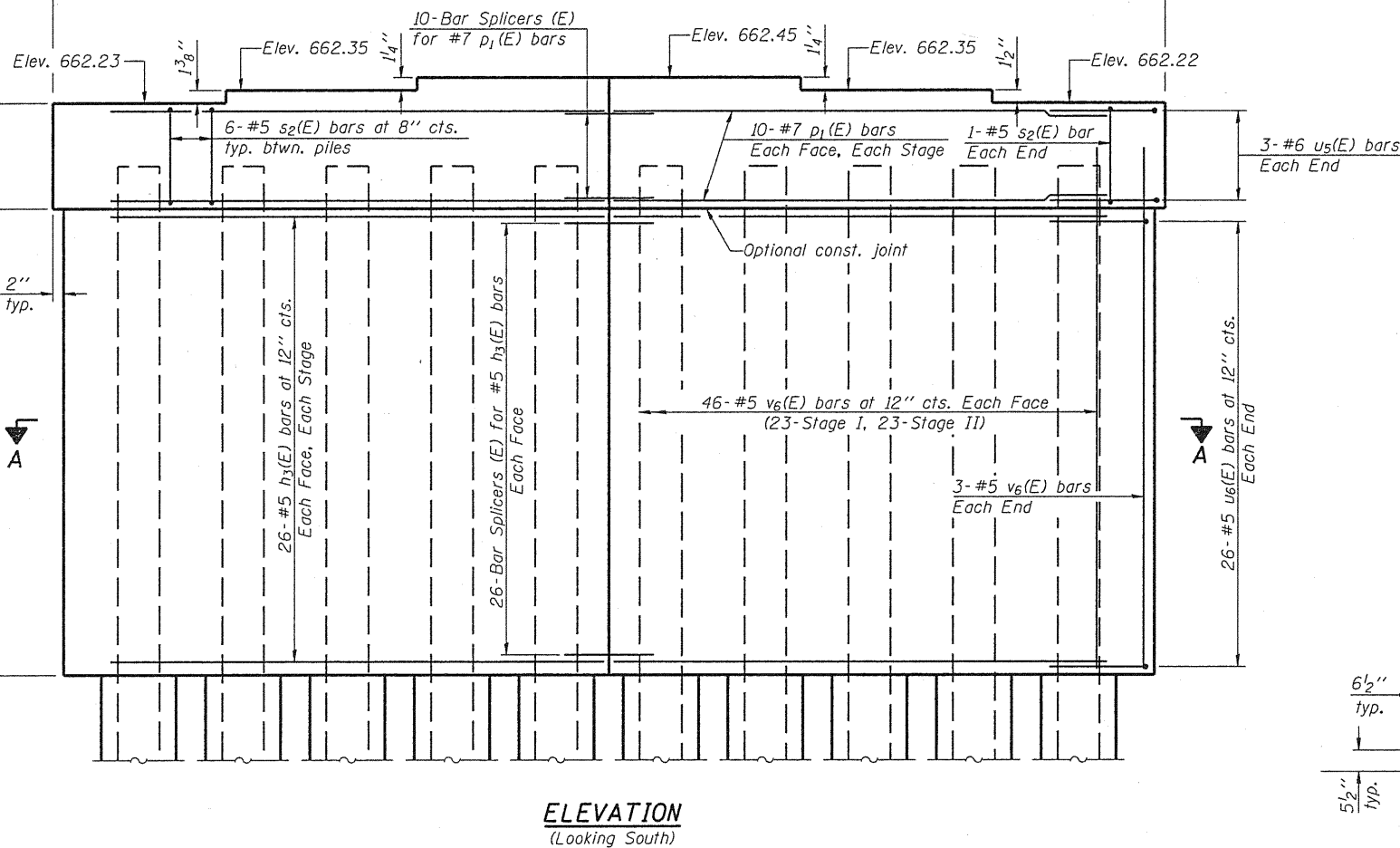
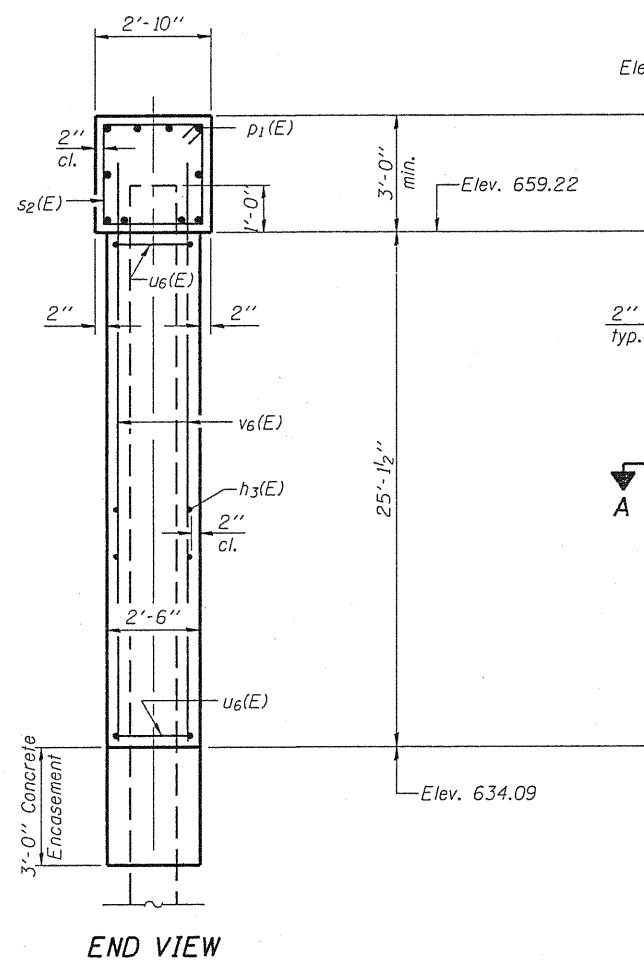
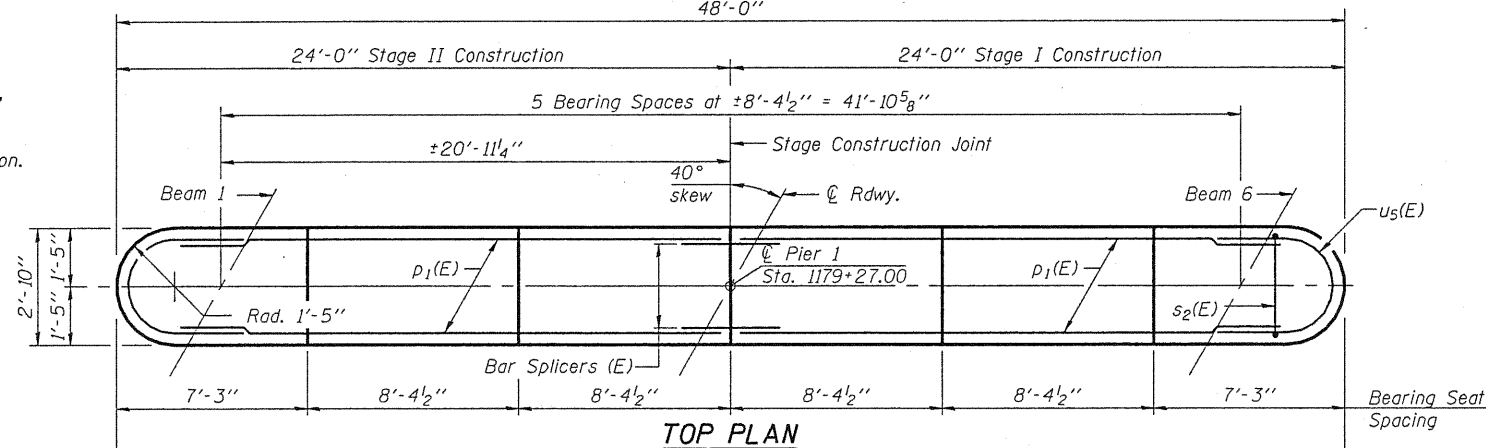


STATE OF ILLINOIS
DEPARTMENT OF TRANSPORTATION

Notes:
Space reinforcement in cap to miss anchor bolts.
Pour steps monolithically with cap.
For details of piles and Concrete Encasement, see sheet 24 of 27.
For details of Bar Splicers, see sheet 25 of 27.
If a portion of the pier wall or concrete encasement is under water, reinforcement may be placed underwater into forms. Concrete shall be tremied according to Article 503.08 of the Standard Specifications to an elevation of 1'-0" above the water line at the time of construction.

PILE DATA

Type: Steel-HP14x73
Nominal Required Bearing: Set in Rock
Factored Resistance Available: 270 kips
Est. Length: 44 feet
No. Production Piles: 10
No. Test Piles: 0
Estimated Top of Rock Elevation: 627.50
Rock Socket Depth: 10.5 feet
Rock Socket Diameter: 24 inches



BILL OF MATERIAL

Bar	No.	Size	Length	Shape
h3(E)	104	#5	22'-5"	—
p1(E)	20	#7	22'-5"	—
s2(E)	56	#5	11'-3"	□
u5(E)	6	#6	10'-4"	U
u6(E)	52	#5	9'-1"	U
v6(E)	98	#5	26'-9"	—
Structure Excavation		Cu. Yd.	36	
Concrete Structures		Cu. Yd.	125.2	
Concrete Encasement		Cu. Yd.	5.5	
Reinforcement Bars, Epoxy Coated		Pound	7330	
Furnishing Steel Piles HP14x73		Foot	440	
Setting Piles in Rock		Each	10	
Concrete Sealer		Sq. Ft.	2929	
Underwater Structure Excavation Protection - Location 1		Each	1	

**PIER 1
STRUCTURE NO. 094-0051**

MADDER & STUTZ, INC.
ENGINEERS SURVEYORS

DESIGNED - BAS
CHECKED - KEF
DRAWN - SGM
CHECKED - BAS

SHEET NO. 22 27 SHEETS	F.A.P. RTE. 310	SECTION (28B)BR-1	COUNTY WARREN	TOTAL SHEETS 71	SHEET NO. 46
	FED. ROAD DIST. NO. ILLINOIS FED. AID PROJECT			CONTRACT NO. 68661	