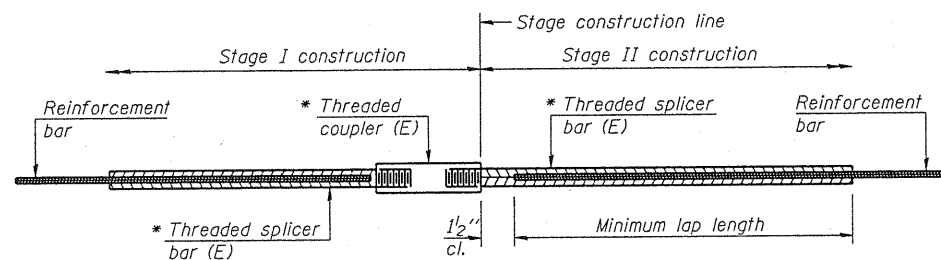


STATE OF ILLINOIS
DEPARTMENT OF TRANSPORTATION



STANDARD BAR SPLICER ASSEMBLY

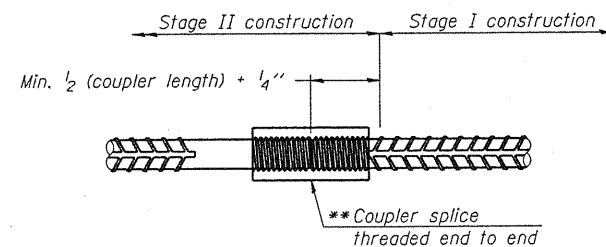
Bar size to be spliced	Minimum Lap Lengths			
	Table 1	Table 2	Table 3	Table 4
3, 4	1'-5"	1'-11"	2'-1"	2'-4"
5	1'-9"	2'-5"	2'-7"	2'-11"
6	2'-1"	2'-11"	3'-1"	3'-6"
7	2'-9"	3'-10"	4'-2"	4'-8"
8	3'-8"	5'-1"	5'-5"	6'-2"
9	4'-7"	6'-5"	6'-10"	7'-9"

Table 1: Black bar, 0.8 Class C
Table 2: Black bar, Top bar lap, 0.8 Class C
Table 3: Epoxy bar, 0.8 Class C
Table 4: Epoxy bar, Top bar lap, 0.8 Class C

Threaded splicer bar length = min. lap length + 1/2" + thread length

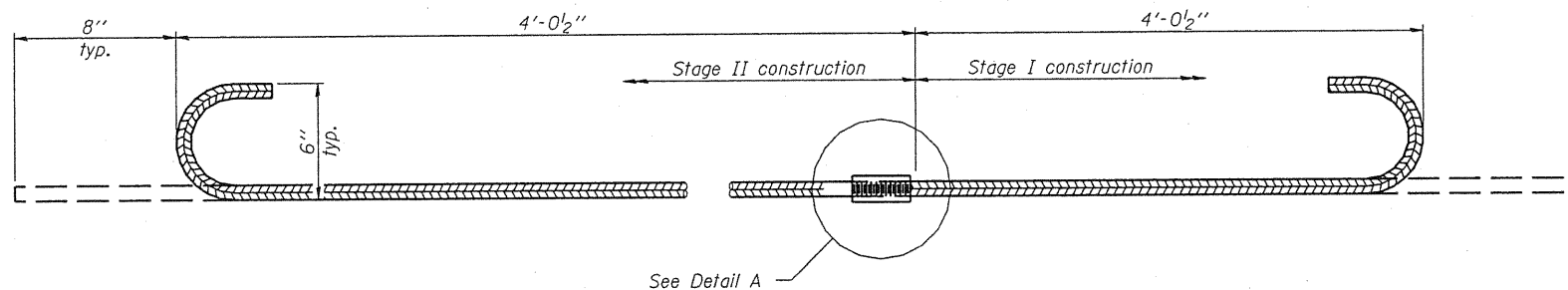
* Epoxy not required on Bar Splicer Assembly components used in conjunction with black bars.

Location	Bar size	No. assemblies required	Table for minimum lap length
Bridge Deck	#5	686	Table 3
Bridge Deck	#6	10	Table 4
Appr. Slab	#4	50	Table 4
Appr. Slab	#5	172	Table 3
Abutment	#7	16	Table 4
Abutment	#6	10	Table 4
Abutment	#5	12	Table 4
Pier	#7	20	Table 4
Pier	#5	104	Table 4



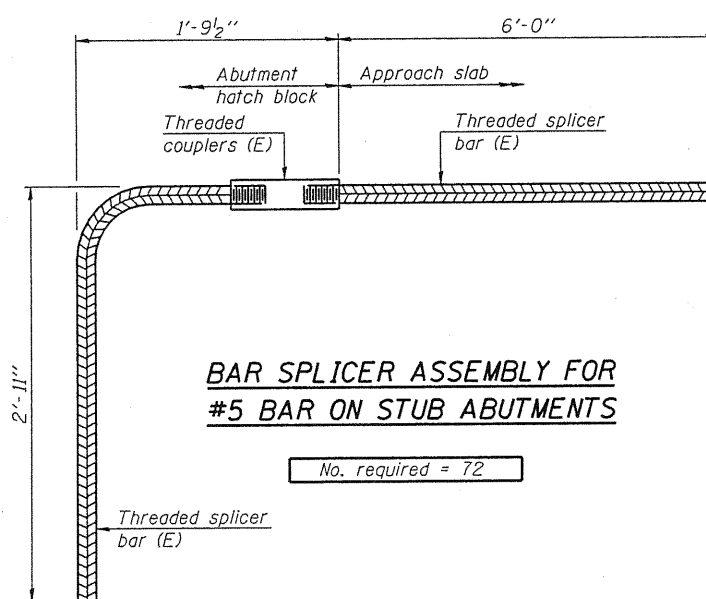
DETAIL A

** The bar splicer assembly shall utilize splice bars with the threaded ends oversized to ensure no reduction in cross sectional area after threading and be designed to allow completion of the splice without turning either of the splice bars.



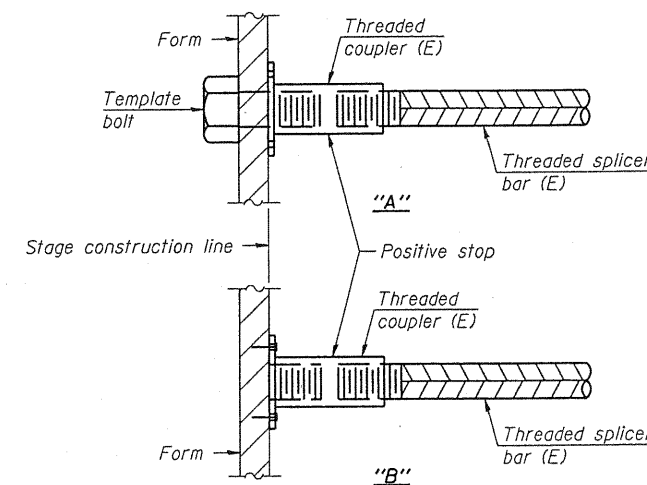
#6 #4(E) BAR SPLICER ASSEMBLY FOR EDGE BEAMS AT STAGE CONSTRUCTION JOINT

No. required = 6



BAR SPLICER ASSEMBLY FOR #5 BAR ON STUB ABUTMENTS

No. required = 72



INSTALLATION AND SETTING METHODS

"A": Set bar splicer assembly by means of a template bolt.
"B": Set bar splicer assembly by nailing to wood forms or cementing to steel forms.
(E) : Indicates epoxy coating.

NOTES

Splicer bars shall be deformed with threaded ends and have a minimum 60 ksi yield strength.
All reinforcement shall be lapped and tied to the splicer bars.
Bar splicer assemblies shall be epoxy coated according to the requirements for reinforcement bars. See Section 508 of the Standard Specifications.
See approved list of bar splicer assemblies for alternatives.

**BAR SPLICER ASSEMBLY DETAILS
STRUCTURE NO. 094-0051**



DESIGNED - BAS
CHECKED - KEF
DRAWN - SGM
CHECKED - BAS

SHEET NO. 25 27 SHEETS	F.A.P. RTE. 310	SECTION (28B)BR-1	COUNTY WARREN	TOTAL SHEETS 71	SHEET NO. 49
	CONTRACT NO. 68661			FED. ROAD DIST. NO. ILLINOIS FED. AID PROJECT	