

INDEX OF SHEETS

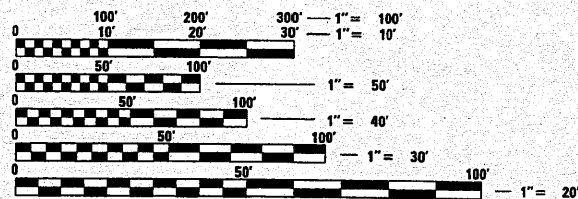
1	COVER SHEET
2	GENERAL NOTES, COMMITMENTS & MIX REQUIREMENTS
3-5	SUMMARY OF QUANTITIES
6-7	TYPICAL SECTIONS
8-9	SCHEDULE OF QUANTITIES
10	CROSS TIES AND BENCHMARKS
11	DETOUR PLAN
12	REMOVAL PLAN
13	PLAN & PROFILE
14	EROSION CONTROL PLAN
15	ENTRANCE AND BUTT JOINT DETAILS
16-34	STRUCTURE PLANS
35-38	DISTRICT 4 CADD STANDARDS
39-45	CROSS SECTIONS
	ILLINOIS DOT HIGHWAY STANDARDS

LIST OF ILLINOIS DOT HIGHWAY STANDARDS

000001-06	630301-05
001001-02	631031-09
280001-05	635006-03
406201-01	635011-02
420001-07	701006-03
420401-08	701101-02
482011-03	701201-04
515001-03	701901-01
542301-03	780001-02
602011-02	781001-03
630001-09	BLR 21-8
60101-01	

LIST OF DISTRICT 4 CADD STANDARDS

205001-D4
630101-D4
667101-D4



FULL SIZE PLANS HAVE BEEN PREPARED USING STANDARD ENGINEERING SCALES. REDUCED SIZED PLANS WILL NOT CONFORM TO STANDARD SCALES. IN MAKING MEASUREMENTS ON REDUCED PLANS, THE ABOVE SCALES MAY BE USED.

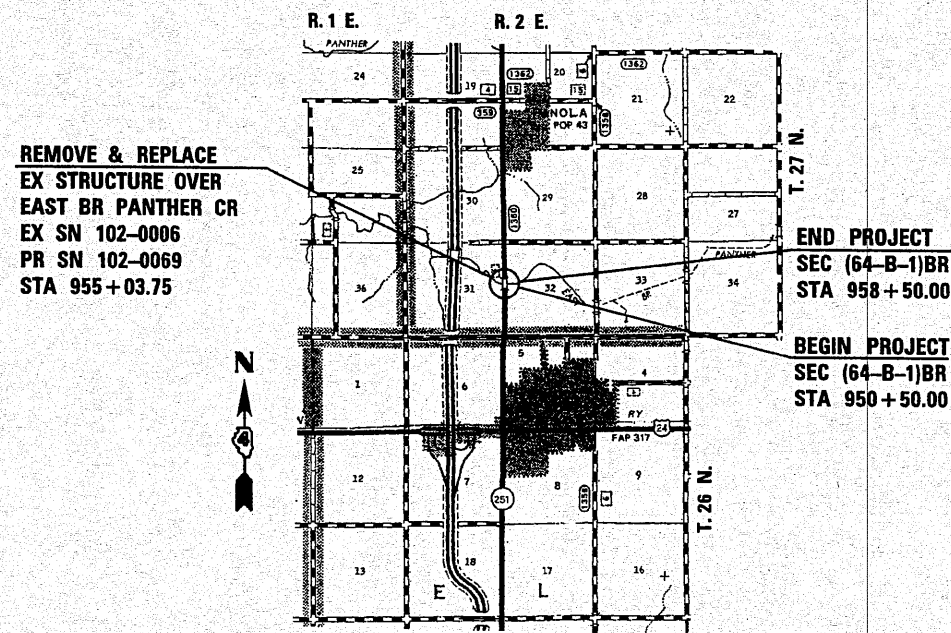
J.U.L.I.E.
JOINT UTILITY LOCATION INFORMATION FOR EXCAVATION
1-800-892-0123
OR 811

PROJECT ENGINEER: RICH DOTSON 309-671-3455
PROJECT MANAGER: TERRISA WORSFOLD 309-671-3465

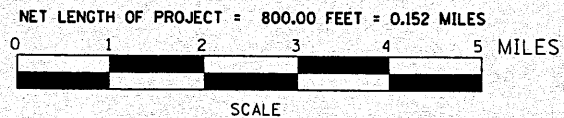
CATALOG NO. 033719-00D
CONTRACT NO. 68785

STATE OF ILLINOIS
DEPARTMENT OF TRANSPORTATION
DIVISION OF HIGHWAYS
**PROPOSED
HIGHWAY PLANS**

FAS 1360 (IL ROUTE 251)
SECTION (64-B-1)BR
PROJECT BRS-1360(108)
WOODFORD COUNTY
C-94-025-08



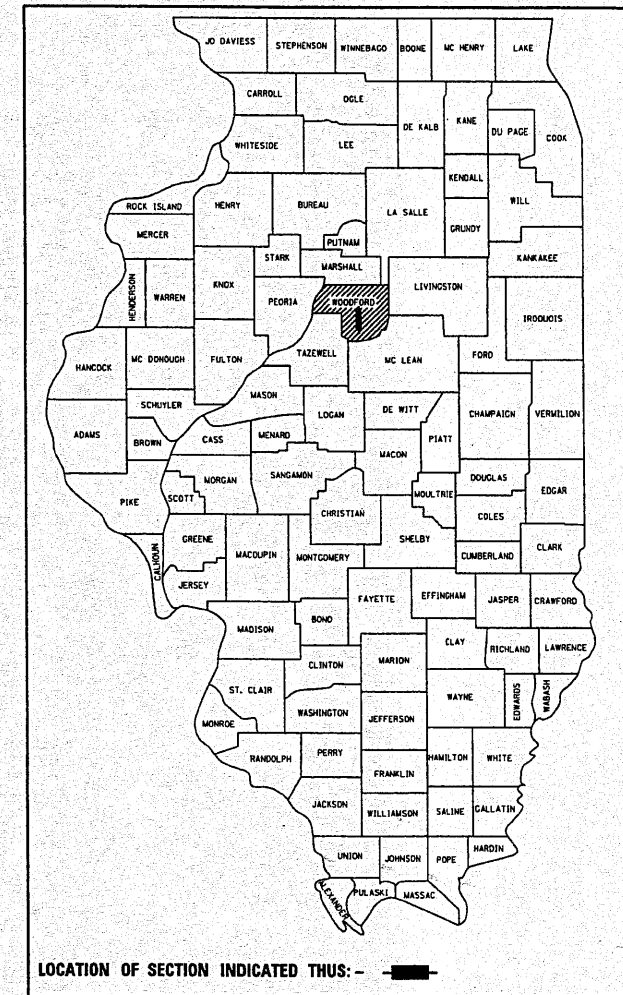
LOCATION PLAN



Allen Henderson & Associates, Inc.
Civil and Structural Engineers Springfield, IL
62703 Phone: (217)544-8033 IL Design Firm
No. 184-001907

F.A.S. RTE.	SECTION	COUNTY	TOTAL SHEETS	SHEET NO.
1360	(64-B-1)BR	WOODFORD	45	1
FED. ROAD DIST. NO.	ILLINOIS	CONTRACT NO. 68785		

D-94-023-08



ADT = 1650 (2007)
% SU = 5.5 (2007)
% MU = 5.5 (2007)
TOWNSHIP: PANOLA
FUNCTIONAL CLASSIFICATION: MAJOR COLLECTOR (RURAL)

STATE OF ILLINOIS
DEPARTMENT OF TRANSPORTATION
DIVISION OF HIGHWAYS
SUBMITTED 10/21/10
Scott E. Still
DEPUTY DIRECTOR OF HIGHWAYS, REGION THREE ENGINEER
Dec 10 20 10
Scott E. Still
Acting ENGINEER OF DESIGN AND ENVIRONMENT
Dec 10 20 10
Christine M. Reeder
DIRECTOR OF HIGHWAYS, CHIEF ENGINEER

PRINTED BY THE AUTHORITY
OF THE STATE OF ILLINOIS

CHRISTOPHER P. KOLB
082-046568
LICENSED
PROFESSIONAL
ENGINEER
OF
STATE OF ILLINOIS
Christopher P. Kolb
EXPIRATION: 11/30/2011 10/21/10