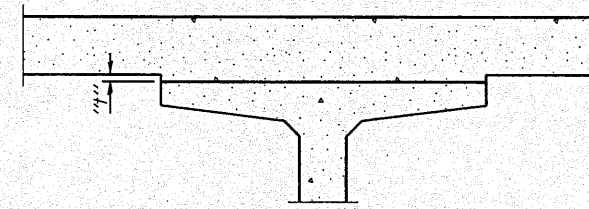


**DEAD LOAD DEFLECTION DIAGRAM**

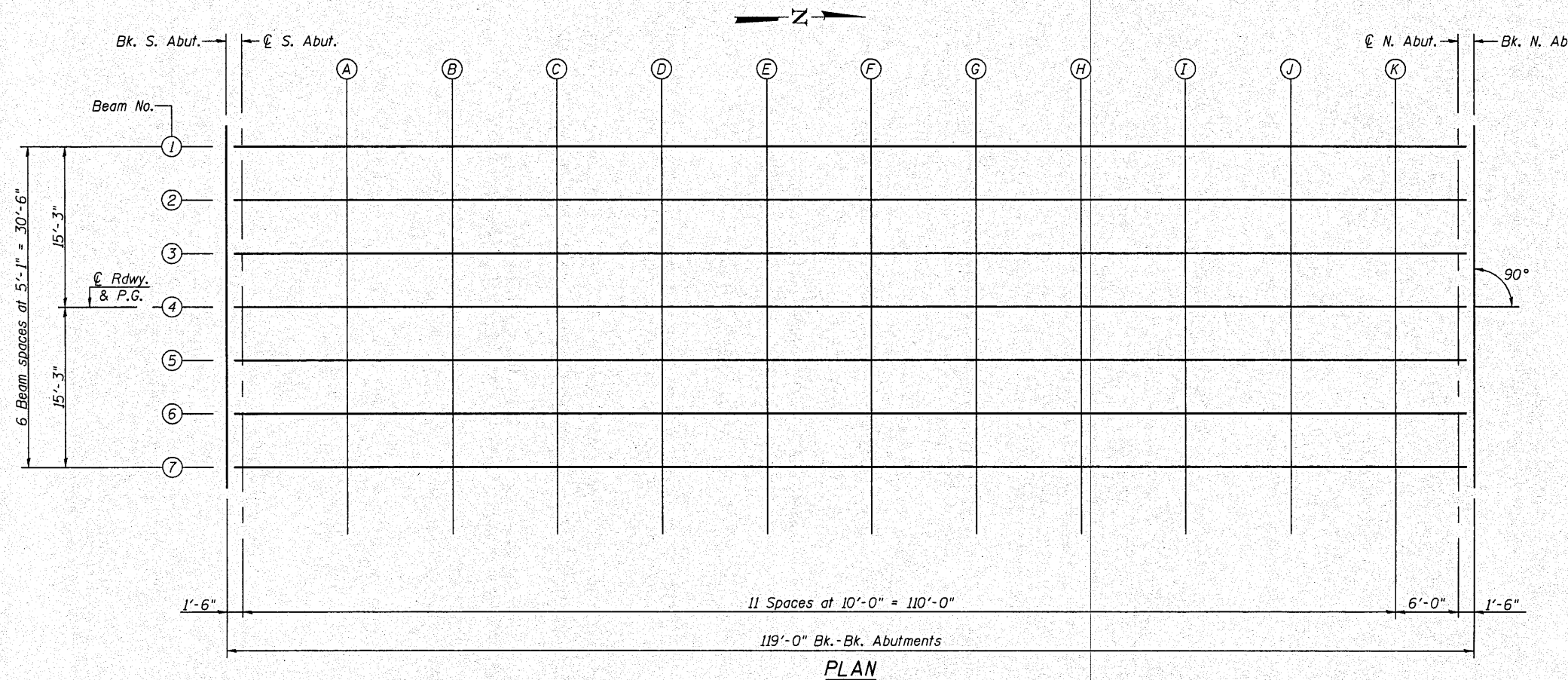
(Includes weight of concrete, excluding beams).

Note:  
The above deflections are not to be used in the field if the engineer is working from the grade elevations adjusted for dead load deflections as shown on Sheet 4 of 19.




To determine "t": After all precast prestressed beams have been erected, elevations of the top flanges of the beams shall be taken at intervals shown below. These elevations subtracted from the "Theoretical Grade Elevations Adjusted for Dead Load Deflection" shown on sheet 4 of 19, minus slab thickness equals the fillet heights "t" above top flange of beams.

**FILLET HEIGHTS**



**PLAN**

**TOP OF SLAB ELEVATIONS  
STRUCTURE NO. 102-0069**

 <b>Allen Henderson &amp; Associates, Inc.</b> Civil and Structural Engineers Springfield, IL 62703 Phone: (217)544-8033 IL Design Firm No. 184-001907	SHEET NO. 3	F.A.S. RTE.	SECTION	COUNTY	TOTAL SHEETS	SHEET NO.
	19 SHEETS	1360	(64-B-1)BR	WOODFORD	45	18
				CONTRACT NO. 68785		
		FED. ROAD DIST. NO. - ILLINOIS FED. AID PROJECT				