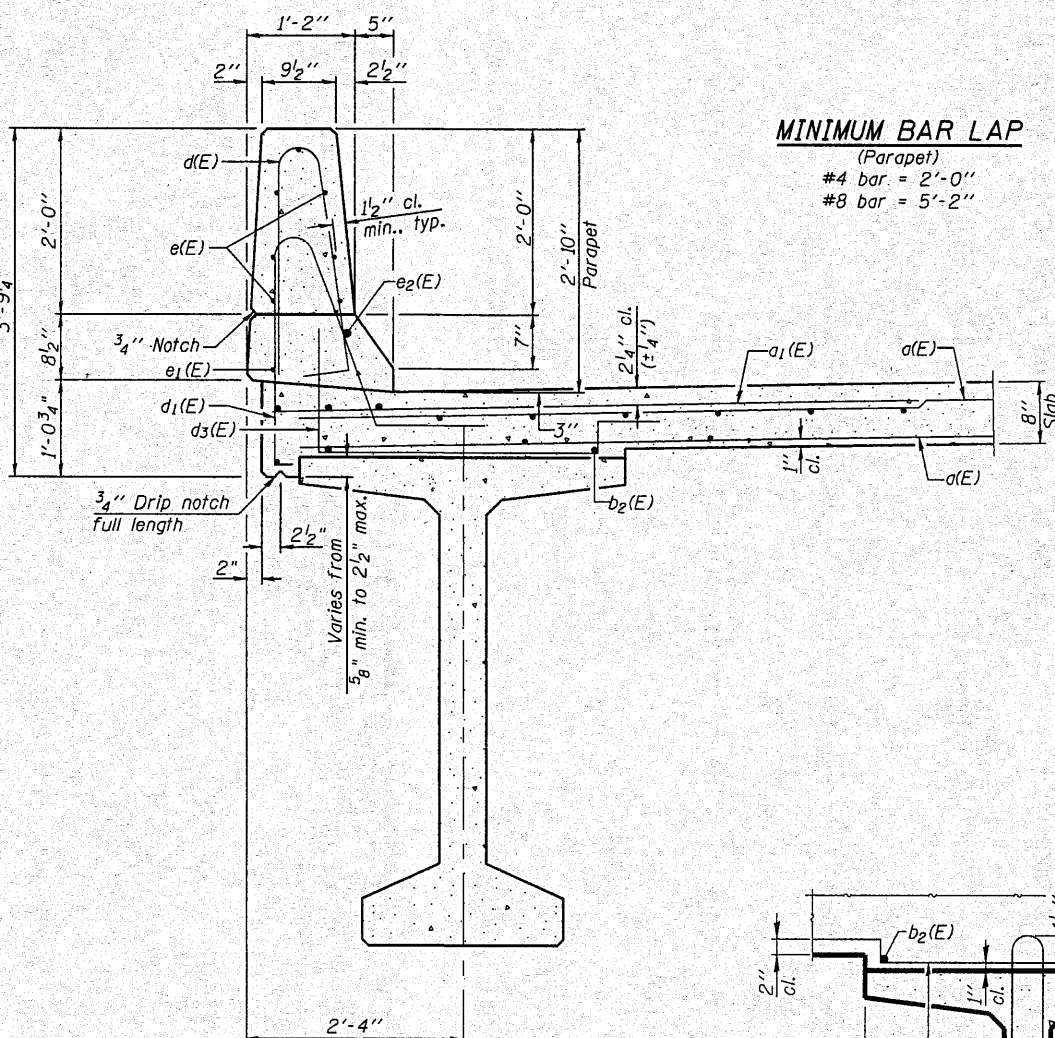
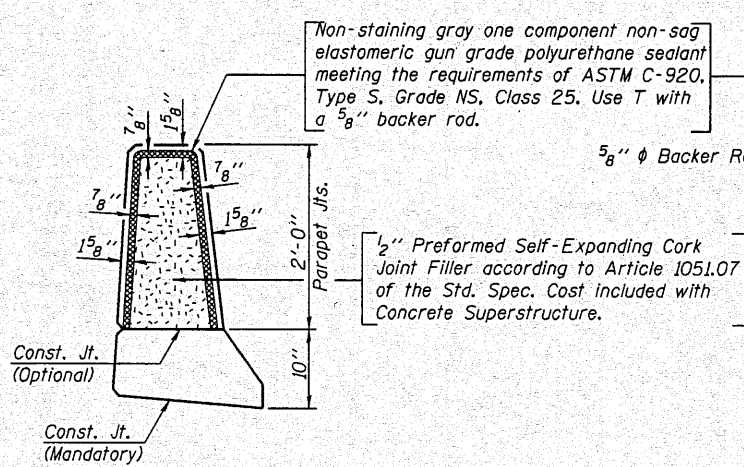


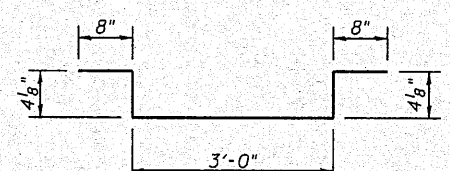
INSIDE ELEVATION OF PARAPET



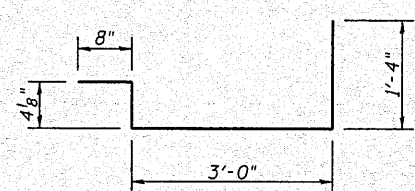
MINIMUM BAR LAP
(Parapet)
#4 bar = 2'-0"
#8 bar = 5'-2"



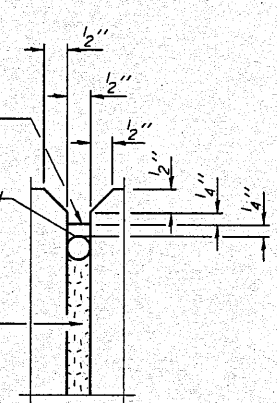
PARAPET JOINT DETAILS



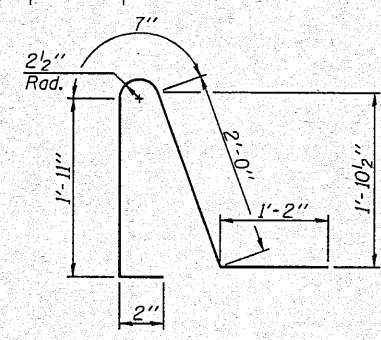
BAR d₂(E)



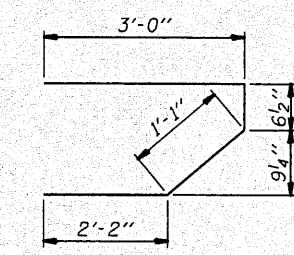
BAR d₃(E)



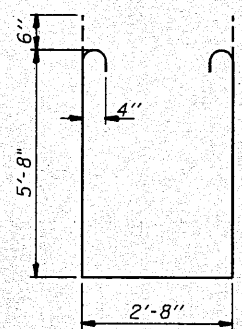
BAR d(E)



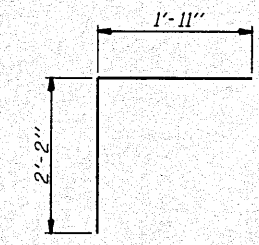
BAR d₁(E)



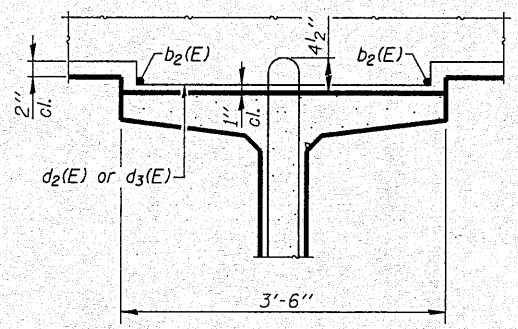
BAR s(E)



BAR s₁(E)



BAR v(E)



FILLET REINFORCEMENT DETAIL

SECTION THRU PARAPET

SUPERSTRUCTURE BILL OF MATERIAL

Bar	No.	Size	Length	Shape
a(E)	348	#5	34'-6"	—
a ₁ (E)	410	#6	6'-6"	—
b(E)	152	#5	32'-2"	—
b ₁ (E)	160	#5	26'-3"	—
b ₂ (E)	28	#4	13'-0"	—
d(E)	260	#5	5'-7"	U
d ₁ (E)	260	#5	5'-10"	U
d ₂ (E)	140	#4	5'-1"	U
d ₃ (E)	56	#4	5'-5"	U
e(E)	98	#4	16'-8"	—
e ₁ (E)	8	#4	31'-8"	—
e ₂ (E)	8	#8	34'-10"	—
m(E)	12	#6	34'-10"	—
m ₁ (E)	42	#6	8'-5"	—
m ₂ (E)	12	#6	2'-7"	—
m ₃ (E)	4	#6	1'-0"	—
s(E)	72	#5	6'-10"	⌋
s ₁ (E)	28	#4	15'-0"	⌋
v(E)	70	#5	4'-1"	⌋
Reinforcement Bars, Epoxy Coated			Lbs.	34330
Concrete Superstructure			Cu. Yds.	197.2

Bars indicated thus 1 x 4-#8 etc. indicates 1 line of bars with 4 lengths per line.

SUPERSTRUCTURE DETAILS STRUCTURE NO. 102-0069



Allen Henderson & Associates, Inc.
Civil and Structural Engineers Springfield, IL
62703 Phone: (217)544-8033 IL Design Firm
No. 184-001907

SHEET NO. 8
19 SHEETS

F.A.S. RTE.	SECTION	COUNTY	TOTAL SHEETS	SHEET NO.
1360	(64-B-1)BR	WOODFORD	45	23
FED. ROAD DIST. NO. _ ILLINOIS FED. AID PROJECT			CONTRACT NO. 68785	