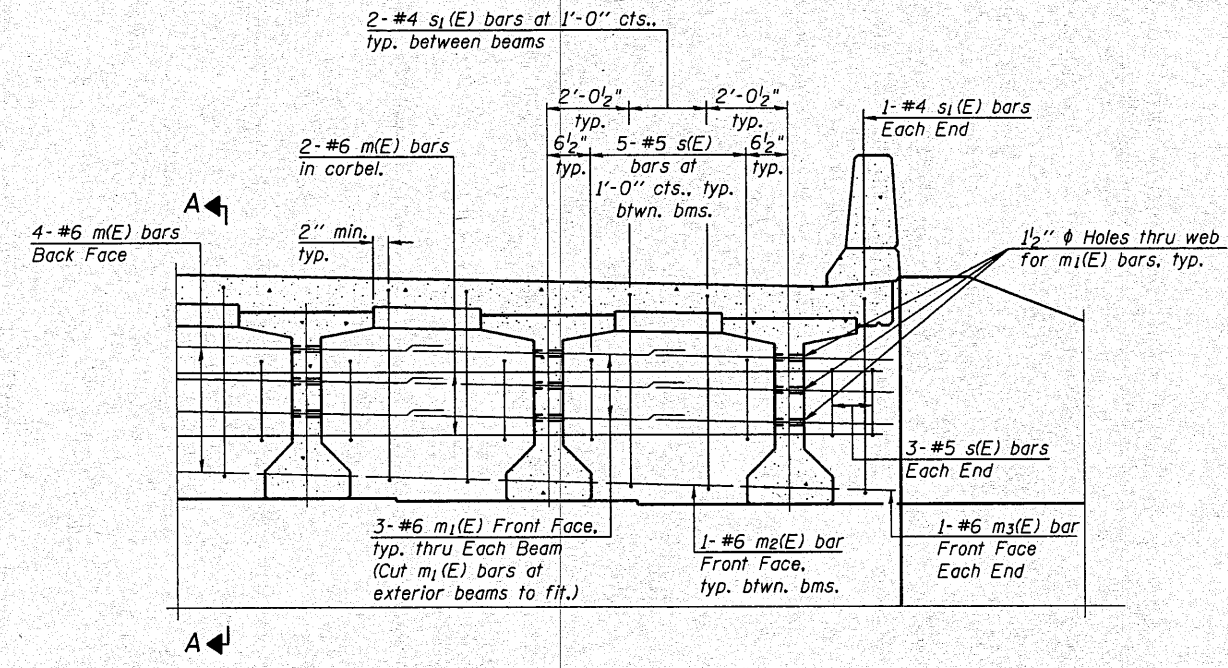


Beam ends shall be set on an initial 1/2" min. grout (2:1 sand and portland cement, very dry mix) to provide full bearing. Any excess grout squeezed out from under the beam shall be removed. Cost included with Concrete Structures.

SECTION A-A




DIAPHRAGM ELEVATION AT ABUTMENT

MIN. BAR LAP
#6 bar = 3'-4"

Notes:
Reinforcement bars in diaphragm are billed with superstructure on sheet 8 of 19.
Concrete in diaphragm is included with Concrete Superstructure on sheet 8 of 19.
For details of bars s(E) and s1(E) see sheet 8 of 19.
The s(E) and s1(E) bars shall be placed parallel to the beams.

**INTEGRAL ABUTMENT
DIAPHRAGM DETAILS
STRUCTURE NO. 102-0069**

 Allen Henderson & Associates, Inc. Civil and Structural Engineers Springfield, IL. 62703 Phone: (217)544-8033 IL Design Firm No. 184-001907	SHEET NO. 9	F.A.S. RTE.	SECTION	COUNTY	TOTAL SHEETS	SHEET NO.
	19 SHEETS	1360	(64-B-1)BR	WOODFORD	45	24
				CONTRACT NO. 68785		
		FED. ROAD DIST. NO. - ILLINOIS FED. AID PROJECT				