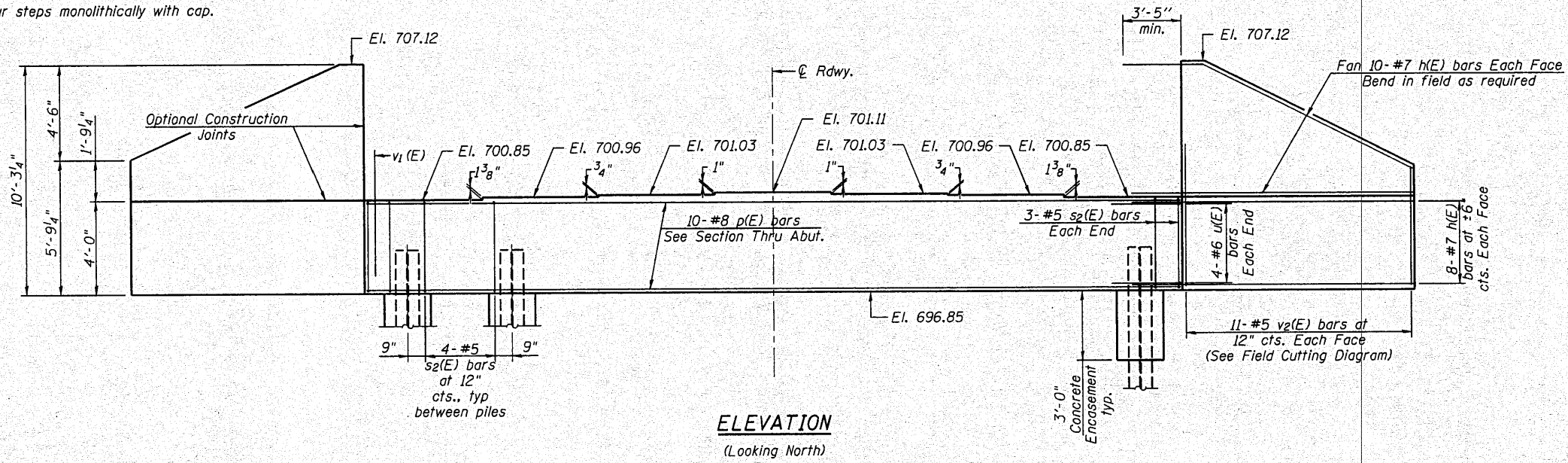
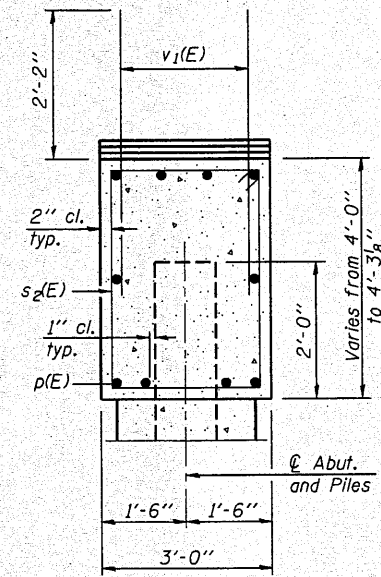


Notes:
Pour steps monolithically with cap.



PILE DATA

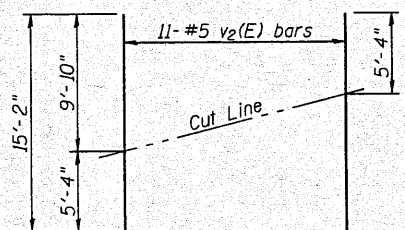
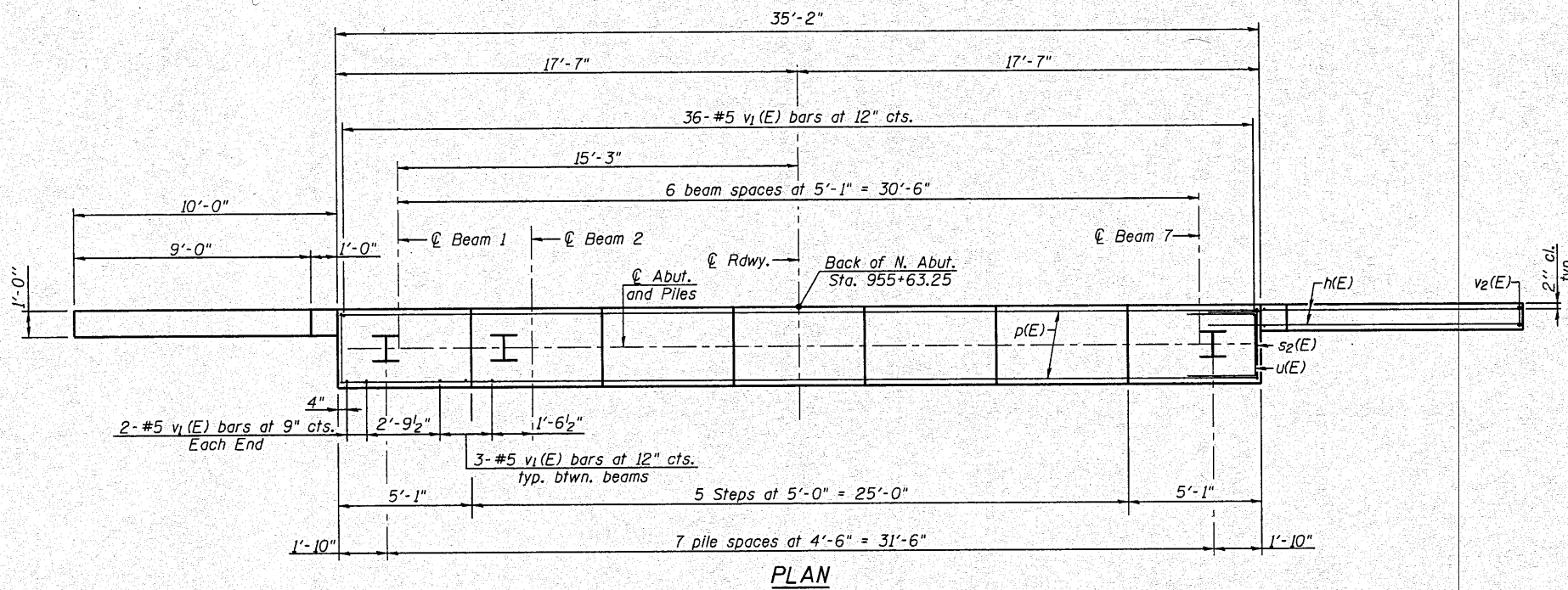
Type: HP10x57 with Pile Shoes
Nominal Required Bearing: 454 Kips
Factored Resistance Available: 227 Kips
Est. Length: 47 ft.
No. Production Piles: 8
No. Test Piles: 0



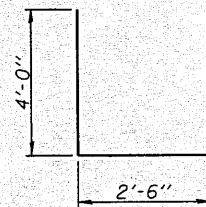
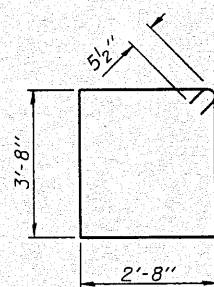
BILL OF MATERIAL

Bar	No.	Size	Length	Shape
h(E)	72	#7	13'-3"	—
p(E)	10	#8	34'-11"	—
s2(E)	34	#5	13'-7"	□
u(E)	8	#6	10'-6"	□
v1(E)	58	#5	4'-4"	—
v2(E)	22	#5	15'-2"	—
Structure Excavation			Cu. Yd.	32.0
Concrete Structures			Cu. Yd.	22.2
Reinforcement Bars, Epoxy Coated			Pound	4100
Furnishing Steel Piles HP10x57			Foot	376
Driving Piles			Foot	376
Pile Shoes			Each	8
Concrete Encasement			Cu. Yd.	2.8

For details of piles and Concrete Encasement, see sheet 17 of 19.



Order v2(E) full length. Cut as shown and use remainder of bars in opposite face.



**NORTH ABUTMENT
STRUCTURE NO. 102-0069**



Allen Henderson & Associates, Inc.
Civil and Structural Engineers Springfield, IL
62703 Phone: (217)544-8033 IL Design Firm
No. 184-001907

SHEET NO. 15
19 SHEETS

F.A.S. RTE.	SECTION	COUNTY	TOTAL SHEETS	SHEET NO.
1360	(64-B-1)BR	WOODFORD	45	30
CONTRACT NO. 68785				
FED. ROAD DIST. NO. _		ILLINOIS FED. AID PROJECT		