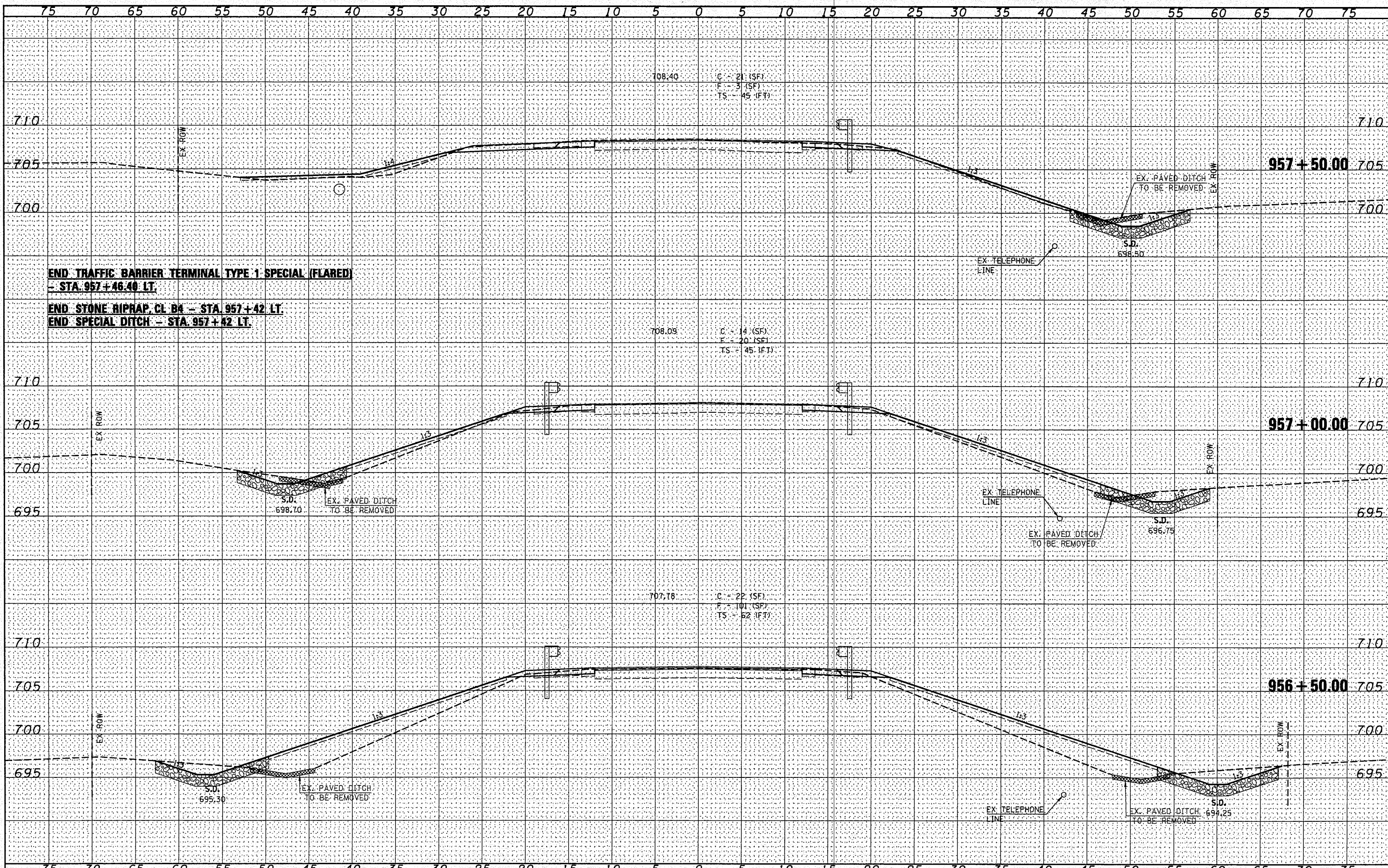


DATE	
BY	
FINAL SURVEY	
SUBMITTED	
PLOTTED	
TEMPLATE	
NOTE BOOK	
AREAS CHECKED	
NO.	

DATE	
BY	
ORIGINAL SURVEY	
SUBMITTED	
PLOTTED	
TEMPLATE	
NOTE BOOK	
AREAS CHECKED	
NO.	



END TRAFFIC BARRIER TERMINAL TYPE 1 SPECIAL (FLARED)
- STA. 957+46.40 LT.

END STONE RIPRAP, CL B4 - STA. 957+42 LT.
END SPECIAL DITCH - STA. 957+42 LT.

FILE NAME =	USER NAME = *USER*	DESIGNED -	REVISED -	<p>Allen Henderson & Associates, Inc. Civil and Structural Engineers Springfield, IL 62703 Phone: (217)544-8033 IL Design Firm No. 184-001907</p>	<p align="center">CROSS SECTIONS</p>		F.A.S. RTE.	SECTION	COUNTY	TOTAL SHEETS	SHEET NO.
	PLOT SCALE = 10,0000' / IN.	DRAWN -	REVISED -		1361	(64-B-1)BR	WOODFORD	45	44		
	PLOT DATE = 10/25/2010	CHECKED -	REVISED -		<p align="center">CONTRACT NO. 68785</p>						
		DATE -	REVISED -		<p align="center">SCALE: 1" = 5' SHEET NO. 6 OF 7 SHEETS STA. 956+50.00 TO STA. 957+50.00 FED. ROAD DIST. NO. ILLINOIS FED. AID PROJECT</p>						