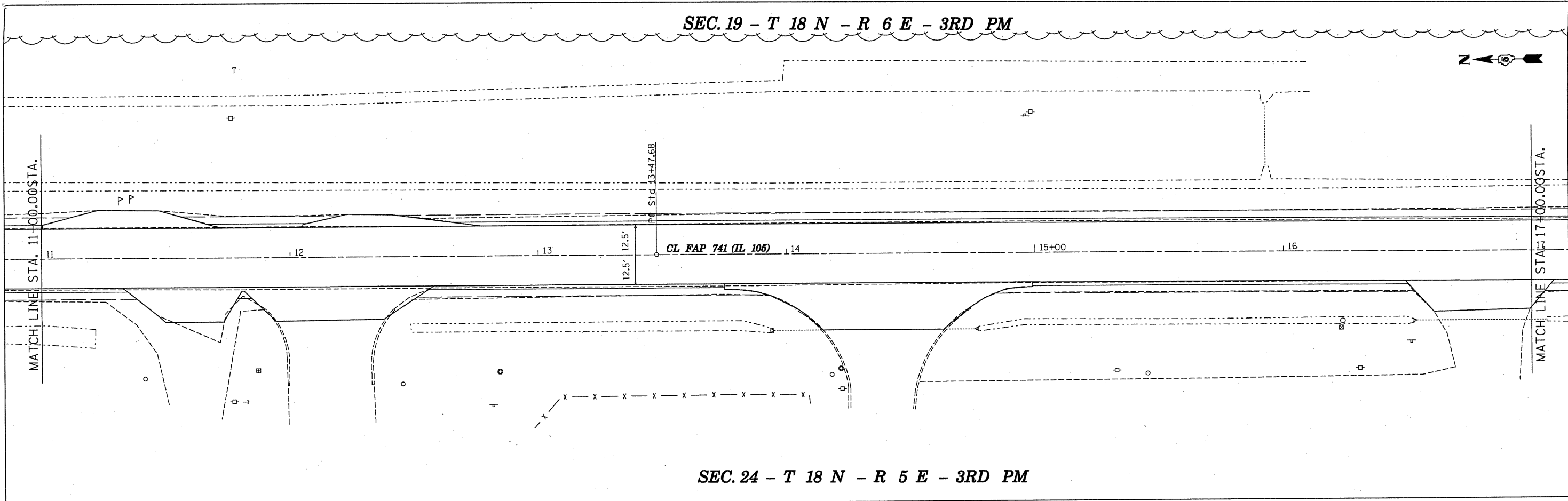
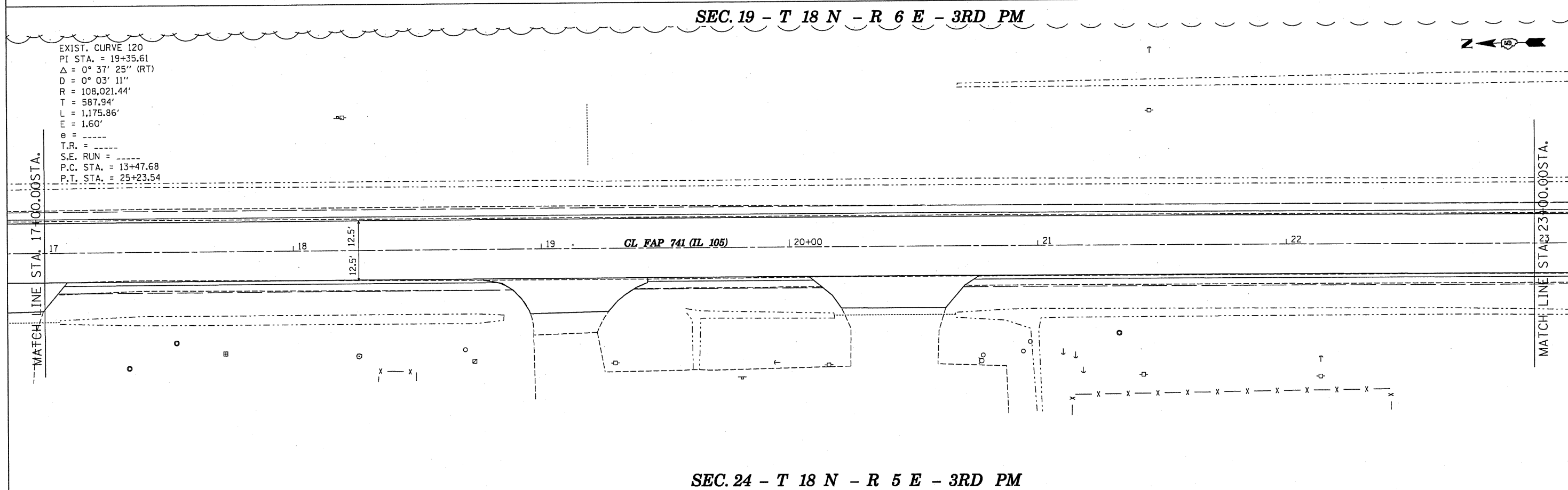


SEC. 19 - T 18 N - R 6 E - 3RD PM



SEC. 24 - T 18 N - R 5 E - 3RD PM

SEC. 19 - T 18 N - R 6 E - 3RD PM



SEC. 24 - T 18 N - R 5 E - 3RD PM

EXIST. CURVE 120  
 PI STA. = 19+35.61  
 $\Delta = 0^\circ 37' 25''$  (RT)  
 $D = 0^\circ 03' 11''$   
 $R = 108,021.44'$   
 $T = 587.94'$   
 $L = 1,175.86'$   
 $E = 1.60'$   
 $e =$   
 $T.P. =$   
 $S.E. RUN =$   
 $P.C. STA. = 13+47.68$   
 $P.T. STA. = 25+23.54$

FILE NAME =	USER NAME = leroyne	DESIGNED -	REVISED -
ca:\pwwork\pwwork\leroyne\0155680\0570273-sht-Plan_20.dgn		DRAWN -	REVISED -
		CHECKED -	REVISED -
		DATE -	REVISED -

**STATE OF ILLINOIS**  
**DEPARTMENT OF TRANSPORTATION**

<b>PLAN SHEETS</b>			
SCALE:	SHEET NO.	OF	SHEETS
			STA. 11+00 TO STA. 23+00

F.A.P. RTE.	SECTION	COUNTY	TOTAL SHEETS	SHEET NO.
741	(75.8,28)RS-3	Platt	202	14
CONTRACT NO. 70273				
ILLINOIS FED. AID PROJECT				