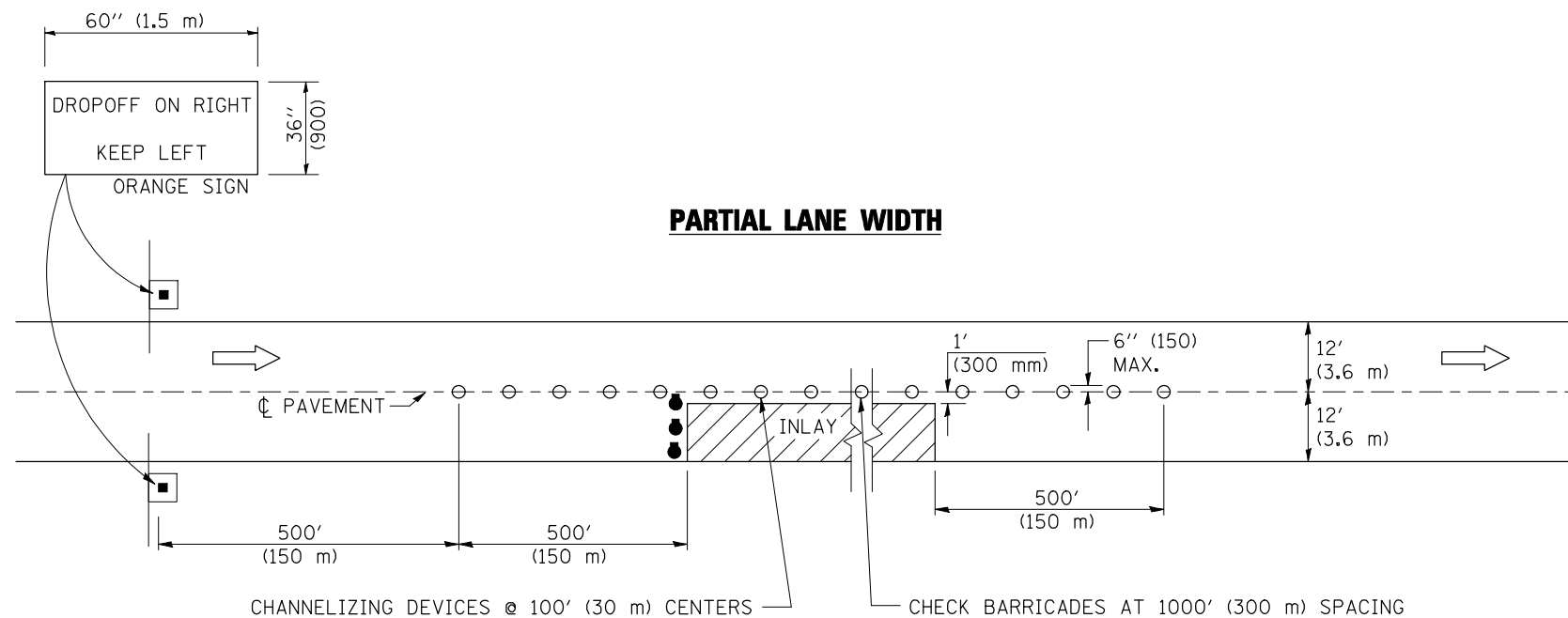


TRAFFIC CONTROL DETAILS NOT SHOWN SHALL BE ACCORDING TO TRAFFIC CONTROL STANDARD 701401.

PASSING LANE CLOSURES SHALL BE SIMILAR. SIGN SHALL READ "DROP OFF ON LEFT, KEEP RIGHT", AND THE TEMPORARY PAVEMENT MARKING LINE 4" (100 mm) SHALL BE A SOLID WHITE LINE.

AT RAMP, THE INLAY WORK AREA SHALL BE STAGED TO COORDINATE WITH STANDARD 701411. TEMPORARY RAMPS THROUGH THE INLAY AREA TO MAINTAIN RAMP TRAFFIC IN LIEU OF STAGING WILL NOT BE ALLOWED.

TYPICAL APPLICATIONS DRIVING LANE INLAY



TRAFFIC CONTROL DETAILS NOT SHOWN SHALL BE ACCORDING TO TRAFFIC CONTROL STANDARD 701401.

AT RAMP, THE INLAY WORK AREA SHALL BE STAGED TO COORDINATE WITH STANDARD 701411. TEMPORARY RAMPS THROUGH THE INLAY AREA TO MAINTAIN RAMP TRAFFIC IN LIEU OF STAGING WILL NOT BE ALLOWED.

SYMBOLS	
	DIRECTION OF TRAVEL
	DRUMS WITH FLASHING LIGHTS
	42" (1.07 m) HIGH INTENSITY REFLECTORIZED CONE, DRUMS OR VERTICAL BARRICADES

Note: All dimensions are in INCHES (millimeters) unless otherwise shown.

FILE NAME =	USER NAME = hoganbj	DESIGNED -	REVISED - 11/06	STATE OF ILLINOIS DEPARTMENT OF TRANSPORTATION	TRAFFIC CONTROL AND PROTECTION, STANDARD 701401 (SPECIAL)	F.A.I. RTE.	SECTION	COUNTY	TOTAL SHEETS	SHEET NO.
ct:\pw\work\p\dot\hoganbj\d0158340\0570650-sht-details.dgn	DRAWN -	REVISED -	74			(57-20(1),21,22)RS-3	MCLEAN	150	94	
PLOT SCALE = 40.0000' / IN.	CHECKED -	REVISED -	CONTRACT NO. 70550							
PLOT DATE = 10/21/2010	DATE -	REVISED -	SCALE:			SHEET NO.	OF SHEETS	STA.	TO STA.	FED. ROAD DIST. NO.