

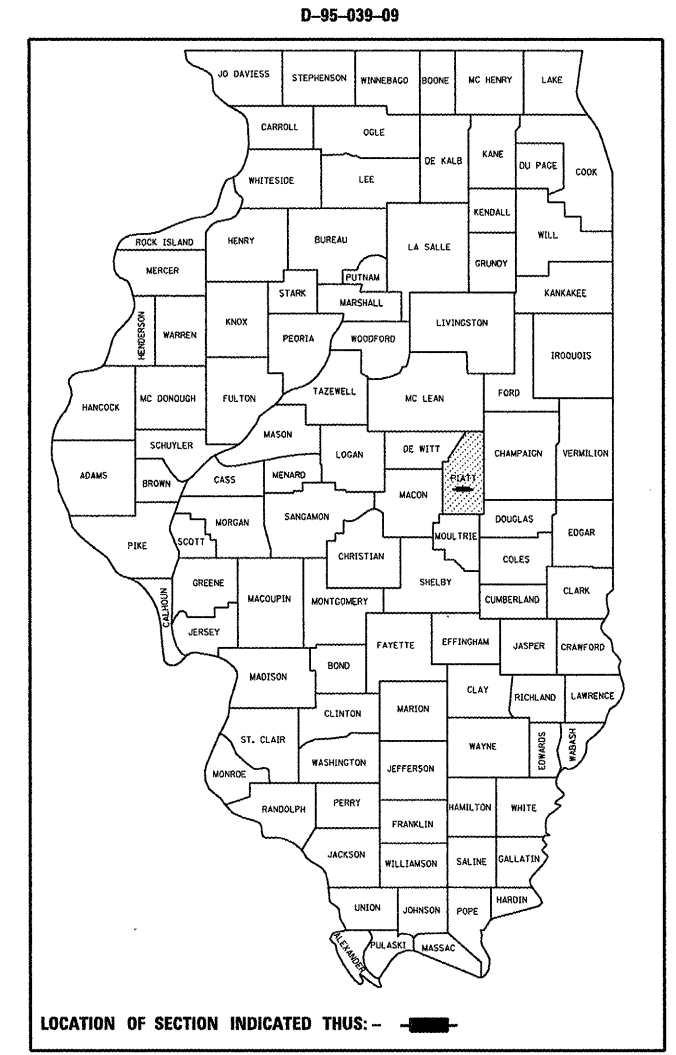
**STATE OF ILLINOIS**  
**DEPARTMENT OF TRANSPORTATION**  
**DIVISION OF HIGHWAYS**  
**PROPOSED**  
**HIGHWAY PLANS**

F.A.P. RTE.	SECTION	COUNTY	TOTAL SHEETS	SHEET NO.
741	(8,9,10)CR	PIATT	65	1
		ILLINOIS	CONTRACT NO. 70800	

FOR INDEX OF SHEETS, SEE SHEET NO. 2  
 FOR SUMMARY OF QUANTITIES, SEE SHEET NO. 4-6

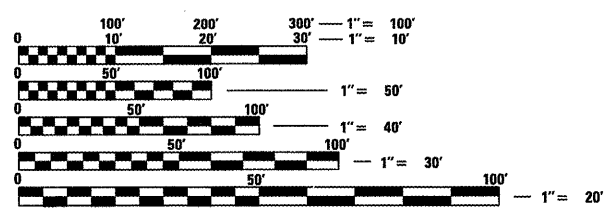
CURRENT ADT: (2010)	
LEG "A" (IL 105 WEST OF IL 32)	= 2,100
LEG "B" (IL 105/IL 32)	= 1,800
LEG "C" (IL 105 EAST OF CERRO GORDO)	= 900
LEG "D" (IL 105 SOUTH OF BEMENT)	= 1,500

**FAP ROUTE 741 (IL 105)**  
**SECTION (8,9,10)CR**  
**PROJECT F-0741(105)**  
**PIATT COUNTY**



- CULVERT REPLACEMENTS:**
- ① 2' X 2' X 44' PCBC
  - ② 8' X 2' X 44' PCBC PROP. S. N. 074-8062
  - ③ 8' X 3' X 42' PCBC PROP. S. N. 074-8065
  - ④ 12' X 4' X 73' PCBC EXIST. S. N. 074-8029; PROP. S. N. 074-8315

C-95-039-09  
**IL 32 (S) TO SCL OF BEMENT**  
**CULVERT REPLACEMENTS**

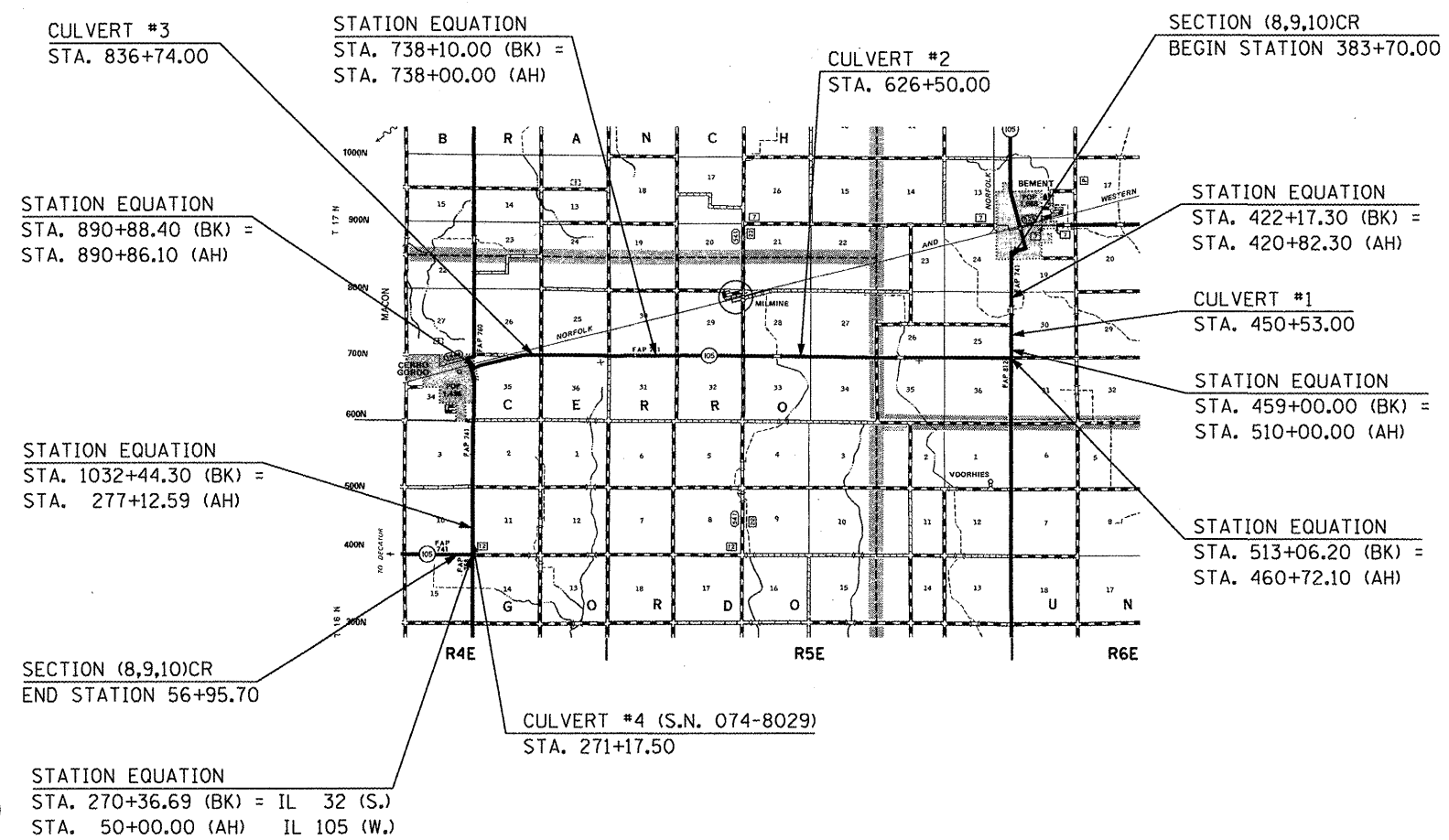


FULL SIZE PLANS HAVE BEEN PREPARED USING STANDARD ENGINEERING SCALES. REDUCED SIZED PLANS WILL NOT CONFORM TO STANDARD SCALES. IN MAKING MEASUREMENTS ON REDUCED PLANS, THE ABOVE SCALES MAY BE USED.

J.U.L.I.E.  
 JOINT UTILITY LOCATION INFORMATION FOR EXCAVATION  
 1-800-892-0123  
 OR 811

**PROJECT ENGINEER : KEVIN TRAPP (217-465-4181)**  
**PROJECT DESIGNER : DANA HENNESS**

**CONTRACT NO. 70800**



GROSS & NET LENGTH OF PROJECT = 79.88 FT. = 0.015 MILE

**STATE OF ILLINOIS**  
**DEPARTMENT OF TRANSPORTATION**  
**DIVISION OF HIGHWAYS**

SUBMITTED 1018 20 10

*Joseph E. Casper (KAC)*  
 DEPUTY DIRECTOR OF HIGHWAYS, REGION ENGINEER

Dec 10 20 10  
*Scott E. Stitt P.E.*  
 acting ENGINEER OF DESIGN AND ENVIRONMENT

Dec 10 20 10  
*Christine M. Reed*  
 DIRECTOR OF HIGHWAYS, CHIEF ENGINEER

**PRINTED BY THE AUTHORITY**  
**OF THE STATE OF ILLINOIS**