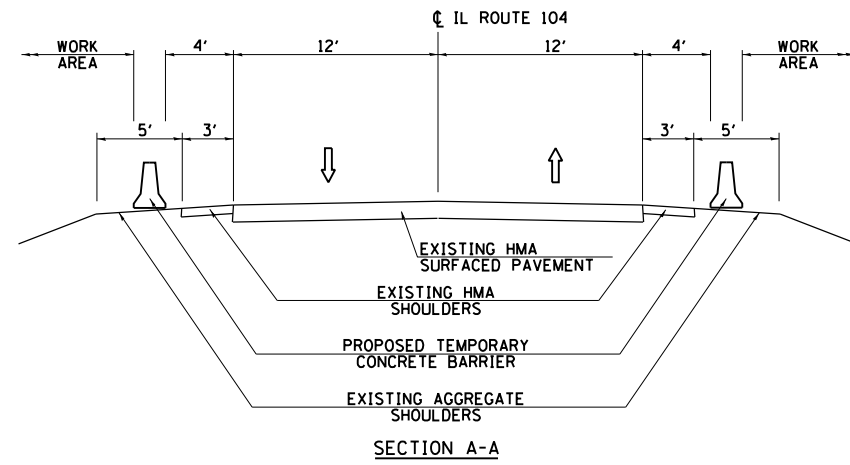
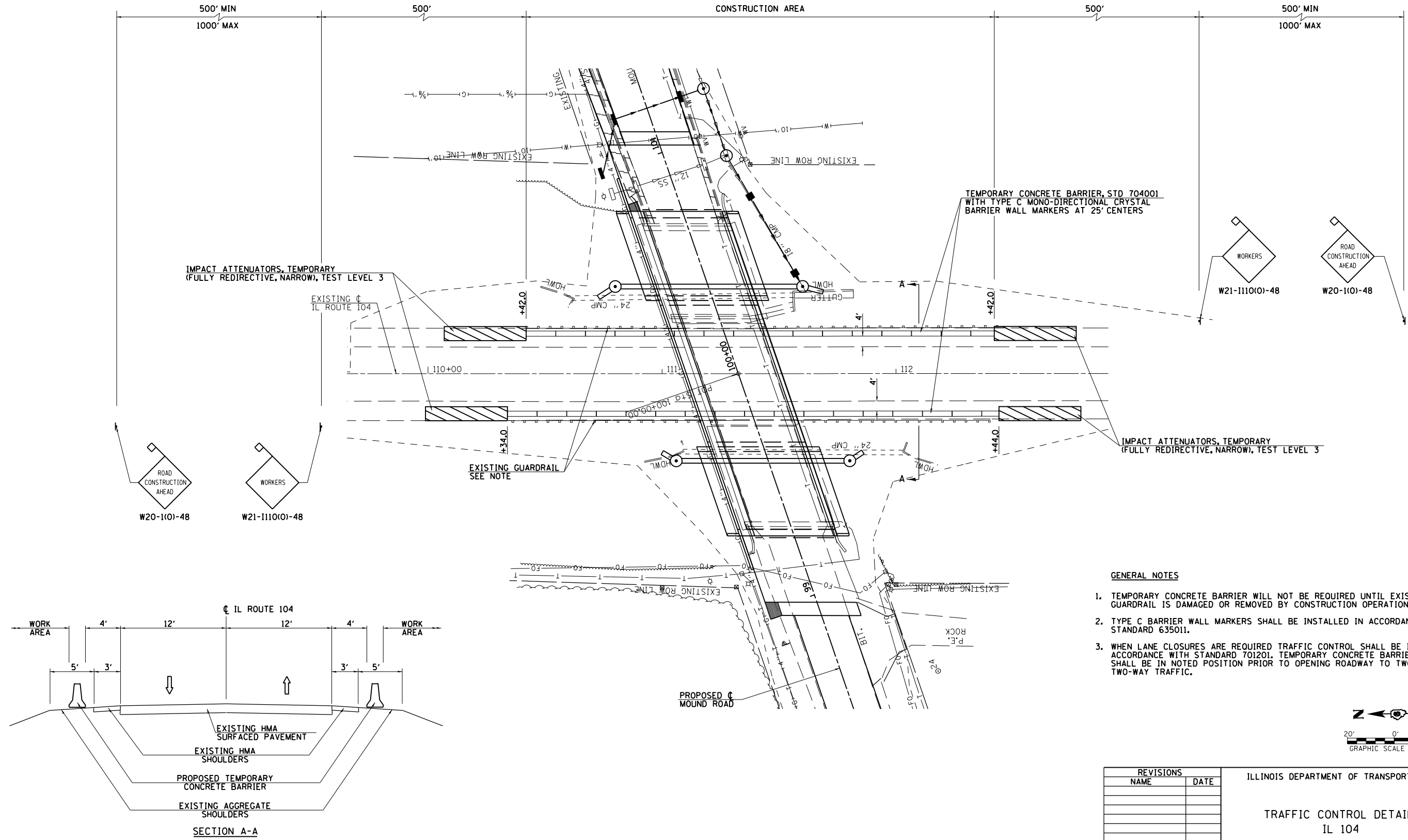


F.A. RTE.	SECTION	COUNTY	TOTAL SHEETS	SHEET NO.
8173	169-HB1BR	MORGAN	63	19
FED. ROAD DIST. NO.	ILLINOIS	FED. AID PROJECT		

CONTRACT NO. 72837

PLAN	SURVEYED	DATE
	PLOTTED	
	NOTED	
	BY	
	NO. OF MAX. CHECKED	
	CADD FILE NAME	

PROFILE	SURVEYED	DATE
	PLOTTED	
	NOTED	
	BY	
	NO. OF MAX. CHECKED	
	STRUCTURE NOTATIONS CHFD	



- GENERAL NOTES**
1. TEMPORARY CONCRETE BARRIER WILL NOT BE REQUIRED UNTIL EXISTING GUARDRAIL IS DAMAGED OR REMOVED BY CONSTRUCTION OPERATIONS.
 2. TYPE C BARRIER WALL MARKERS SHALL BE INSTALLED IN ACCORDANCE WITH STANDARD 635011.
 3. WHEN LANE CLOSURES ARE REQUIRED TRAFFIC CONTROL SHALL BE IN ACCORDANCE WITH STANDARD 701201. TEMPORARY CONCRETE BARRIER SHALL BE IN NOTED POSITION PRIOR TO OPENING ROADWAY TO TWO-LANE, TWO-WAY TRAFFIC.

REVISIONS	
NAME	DATE

ILLINOIS DEPARTMENT OF TRANSPORTATION

TRAFFIC CONTROL DETAILS
IL 104

DATE 10/20/10

DRAWN BY JCW
CHECKED BY JRB