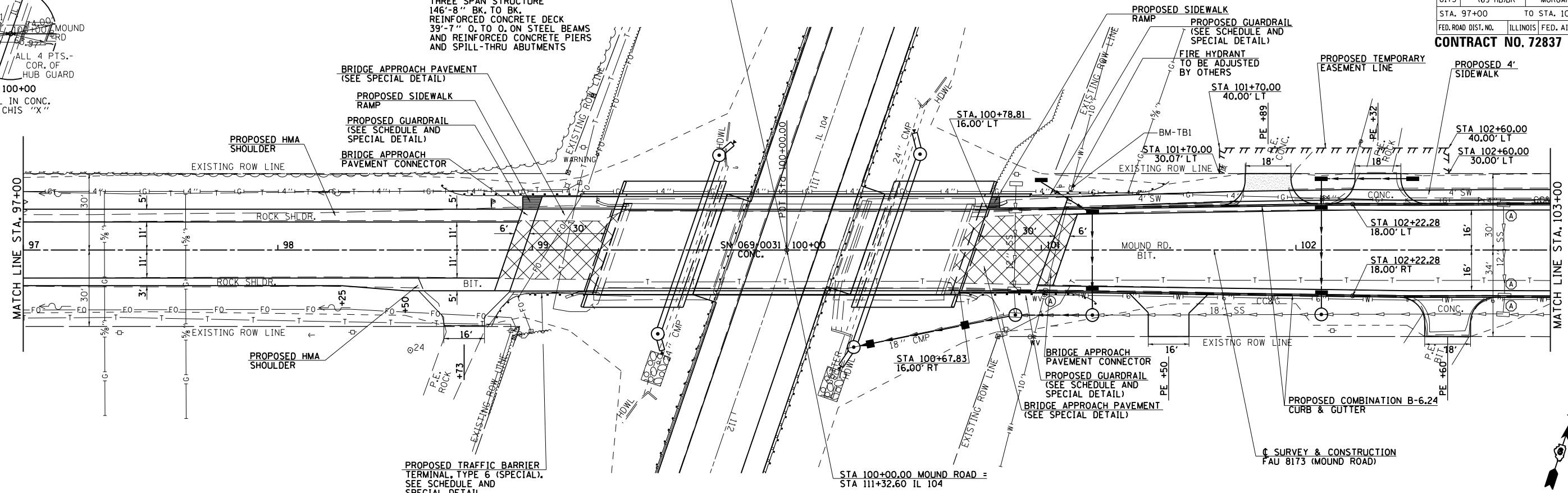


PI STA 100+00  
PAV. NAIL IN CONC.  
WITH CHIS "X"

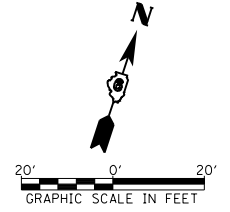
SEC 24, T15N, R11W, 3RD PM

F.A. RTE.	SECTION	COUNTY	TOTAL SHEETS	SHEET NO.
8173	(69-HB)BR	MORGAN	63	24

STA. 97+00 TO STA. 103+00  
FED. ROAD DIST. NO. ILLINOIS FED. AID PROJECT  
**CONTRACT NO. 72837**



SEC 25, T15N, R11W, 3RD PM

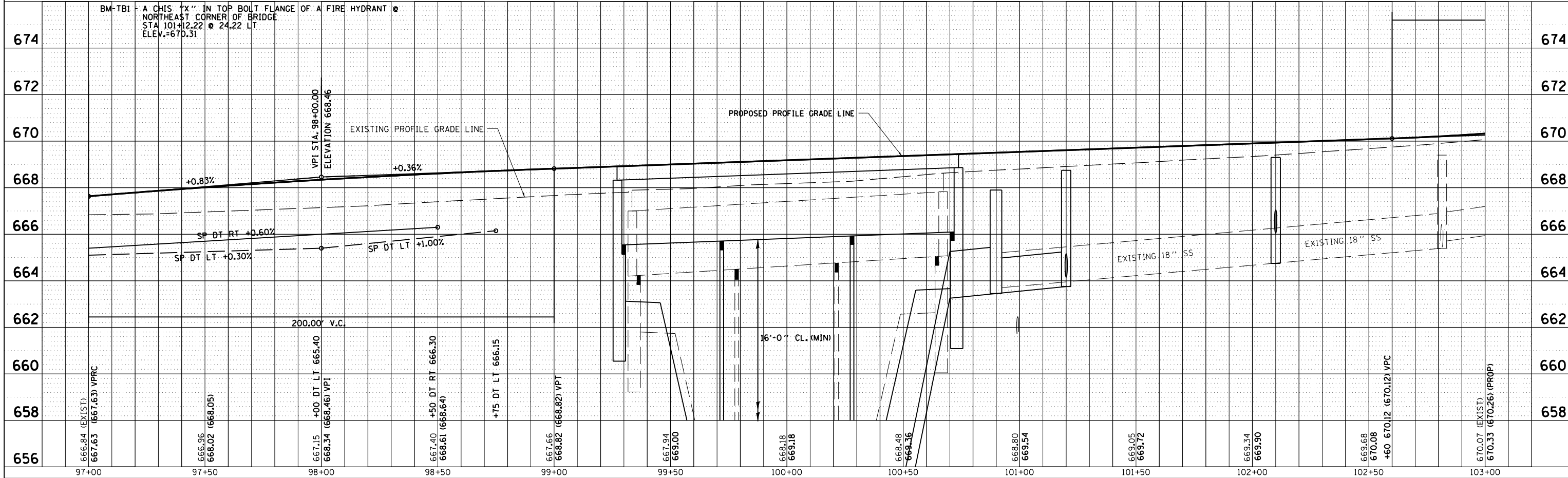


DATE	BY

PLAN  
SURVEYED  
PLOTTED  
NOTE BOOK  
NO.

DATE	BY

PROFILE  
SURVEYED  
PLOTTED  
NOTE BOOK  
NO.



2280-2P002 FAU 8173 (MOUND ROAD) ROADWAY PLAN & PROFILE, STA 97+00 TO STA 103+00