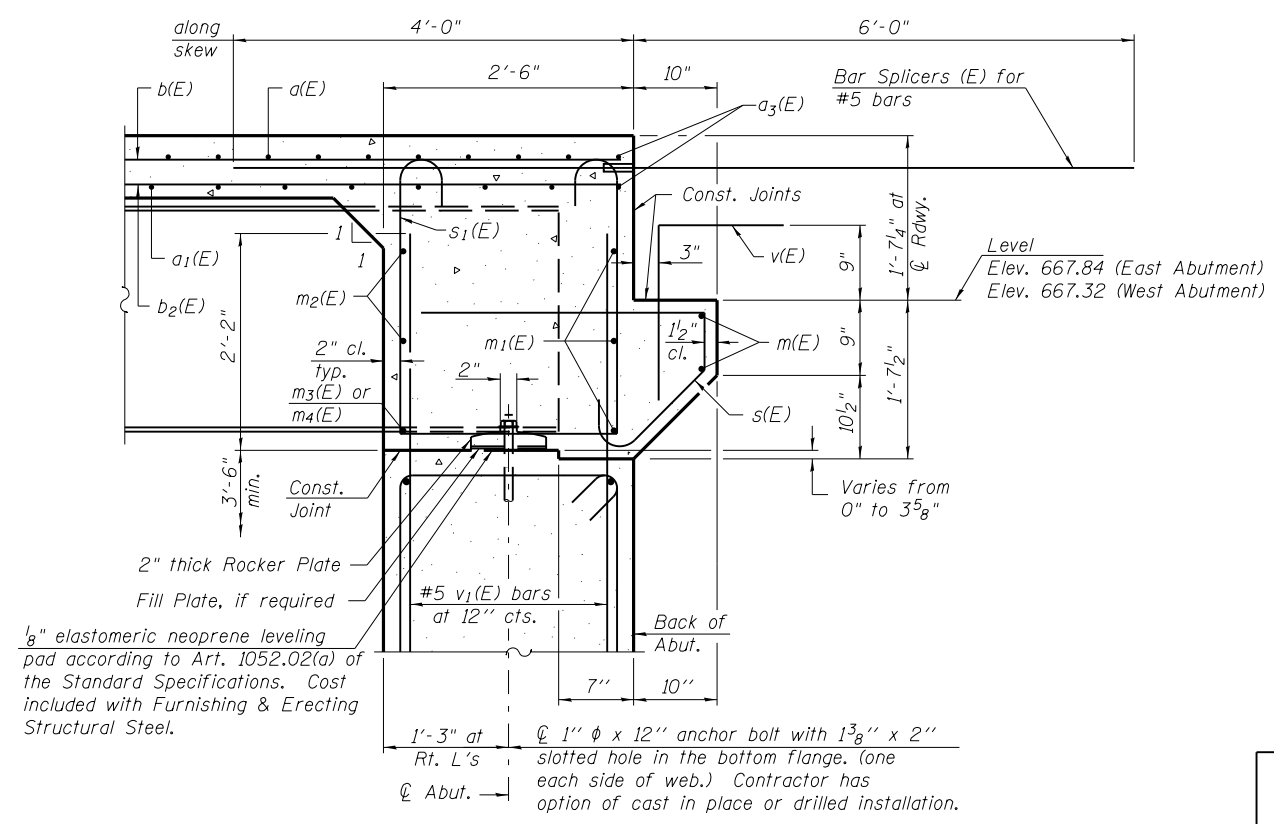


**DIAPHRAGM ELEVATION AT ABUTMENT**  
(East Abutment shown, West Abutment similar)

**Notes:**  
 Reinforcement bars in diaphragm are billed with superstructure on sheet 10 of 27.  
 Concrete in diaphragm is included with Concrete Superstructure on sh 10 of 27.  
 For details of bars s(E) & s<sub>1</sub>(E) see sheet 10 of 27.  
 The s(E) and s<sub>1</sub>(E) bars shall be placed parallel to the beams. Spacing for these bars shall be at right angles to the beams.

**MIN. BAR LAP**  
 #6 bar = 2'-9"



**SECTION A-A**  
 Dimensions at right angles to abutment, except as shown.

DESIGNED	BAN
CHECKED	JOH
DRAWN	TAC
CHECKED	BAN

**DIAPHRAGM DETAILS**  
**MOUND ROAD (FAU ROUTE 8173)**  
**OVER ILLINOIS ROUTE 104**  
**SECTION (69-HB)BR**  
**MORGAN COUNTY**  
**STATION 100+00.00**  
**STRUCTURE NO. 069-0521**

HU CHISON ENGINEERING, INC.  
 JACKSONVILLE, ILLINOIS  
 Date: 12/21/07