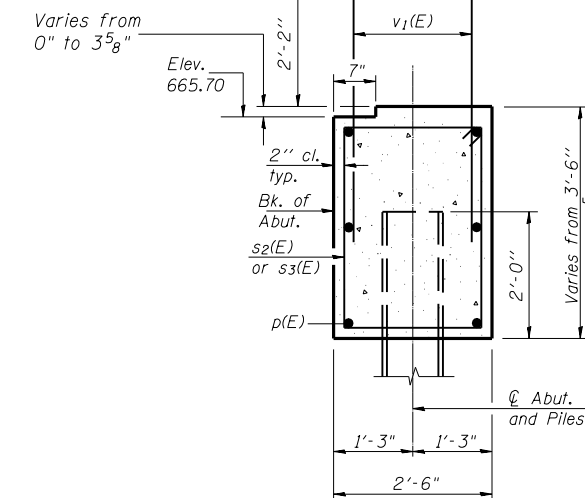
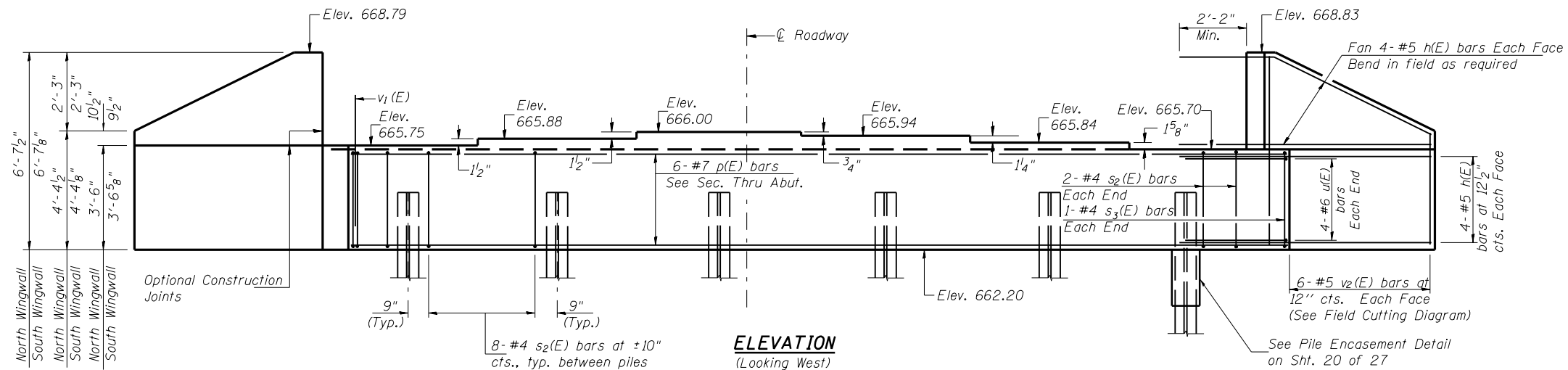
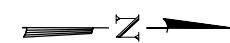
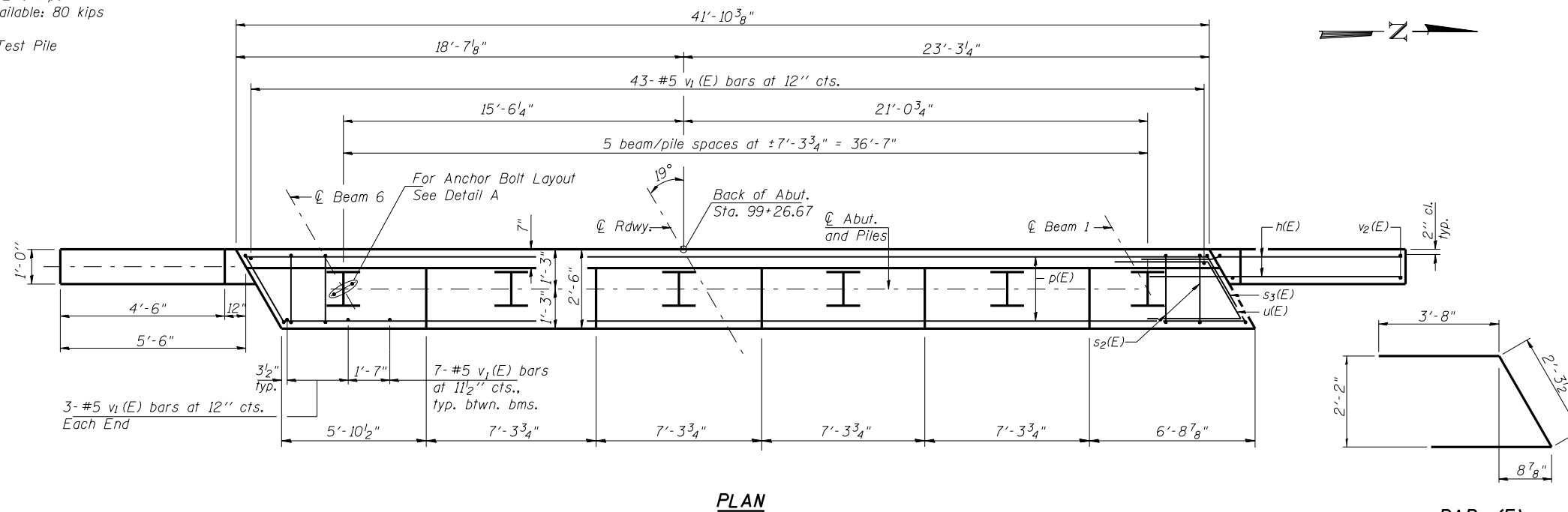


Notes: Four steps monolithically with cap.



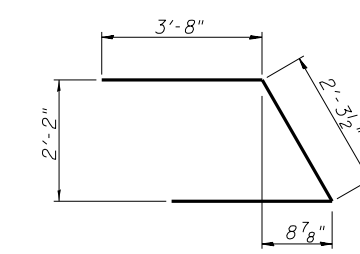
**PILE DATA**

Type & Size: Steel HP10x42  
 Nominal Req'd. Bearing: 240 kips  
 Allowable Resistance Available: 80 kips  
 Est. Length: 52 ft.  
 No. Required: 5 plus 1 Test Pile

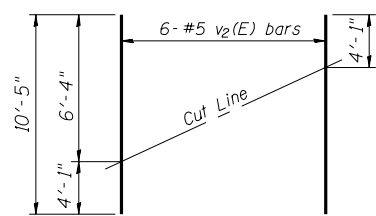


**BILL OF MATERIAL**

Bar	No.	Size	Length	Shape
h(E)	32	#5	8'-8"	
p(E)	6	#7	41'-6"	
s2(E)	44	#4	11'-3"	□
s3(E)	2	#4	11'-6"	□
u(E)	8	#6	9'-8"	└
v1(E)	84	#5	4'-4"	
v2(E)	12	#5	10'-5"	
Concrete Structures	Cu. Yd.	16.4		
Concrete Encasement	Cu. Yd.	2.1		
Reinforcement Bars, Epoxy Coated	Pound	1,770		
Structure Excavation	Cu. Yd.	65		
Furnishing Steel Pile HP10x42	Foot	260		
Driving Piles	Foot	260		
Test Pile Steel HP10x42	Each	1		

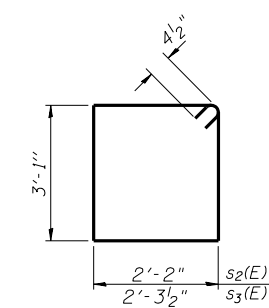


**BAR u(E)**

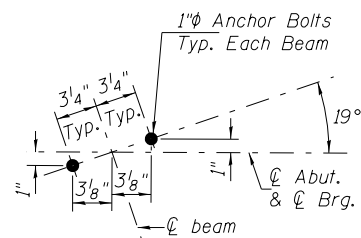


**FIELD CUTTING DIAGRAM**

Order v2(E) full length. Cut as shown and use remainder of bars in opposite face.



**BARS s2(E) & s3(E)**



**DETAIL A**

DESIGNED	BAN
CHECKED	JOH
DRAWN	TD & TC
CHECKED	BAN

**WEST ABUTMENT  
 MOUND ROAD (FAU ROUTE 8173)  
 OVER ILLINOIS ROUTE 104  
 SECTION (69-HB)BR  
 MORGAN COUNTY  
 STATION 100+00.00  
 STRUCTURE NO. 069-0521**

HU CHISON ENGINEERING, INC.  
 JACKSONVILLE, ILLINOIS  
 Date: 12/21/07