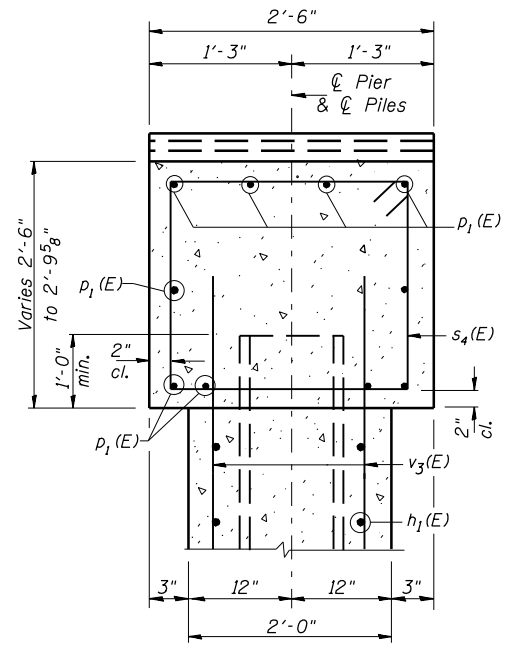
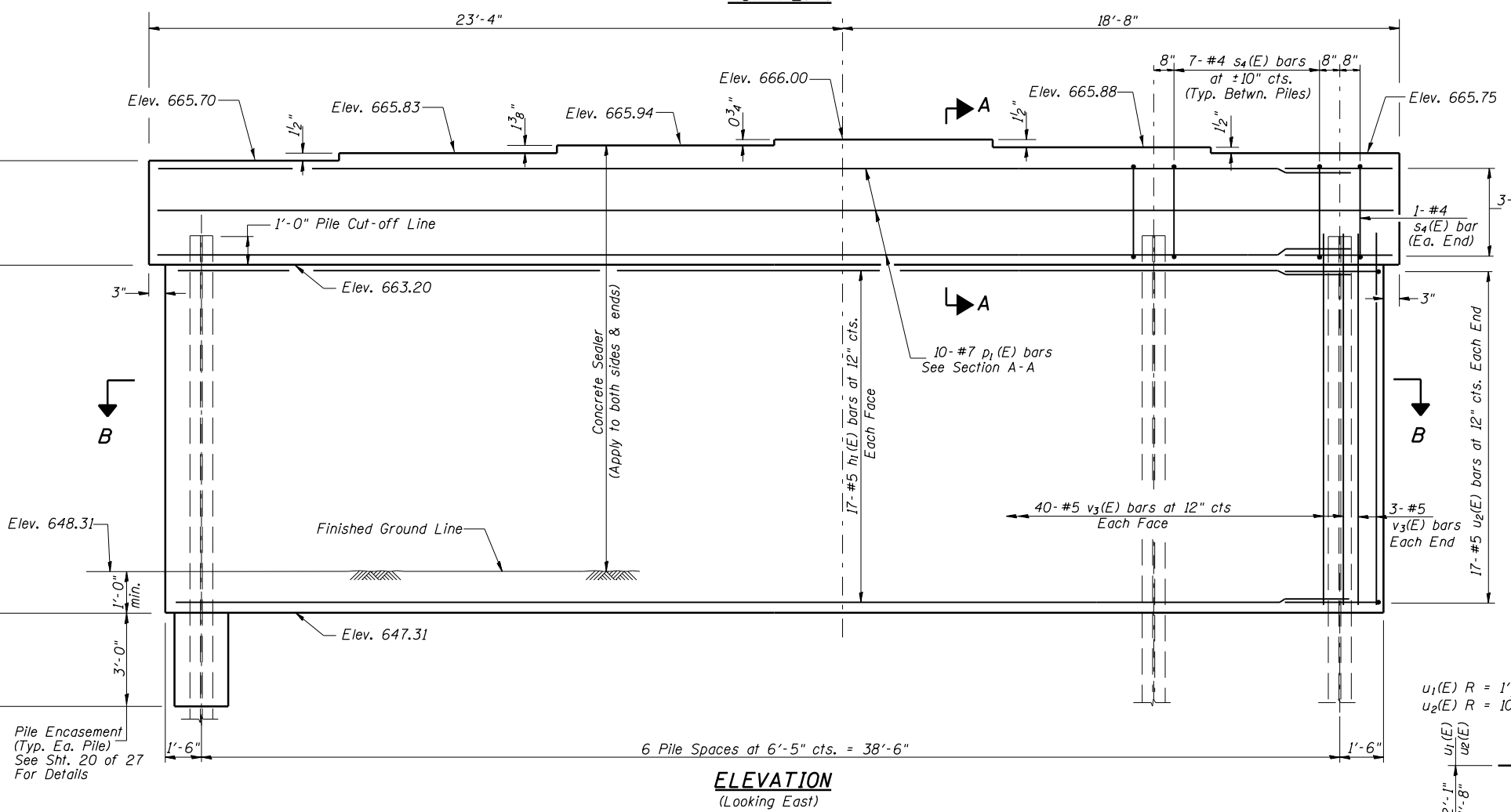
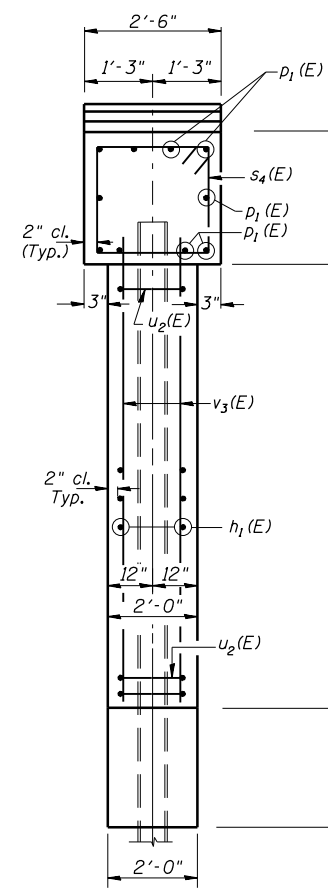
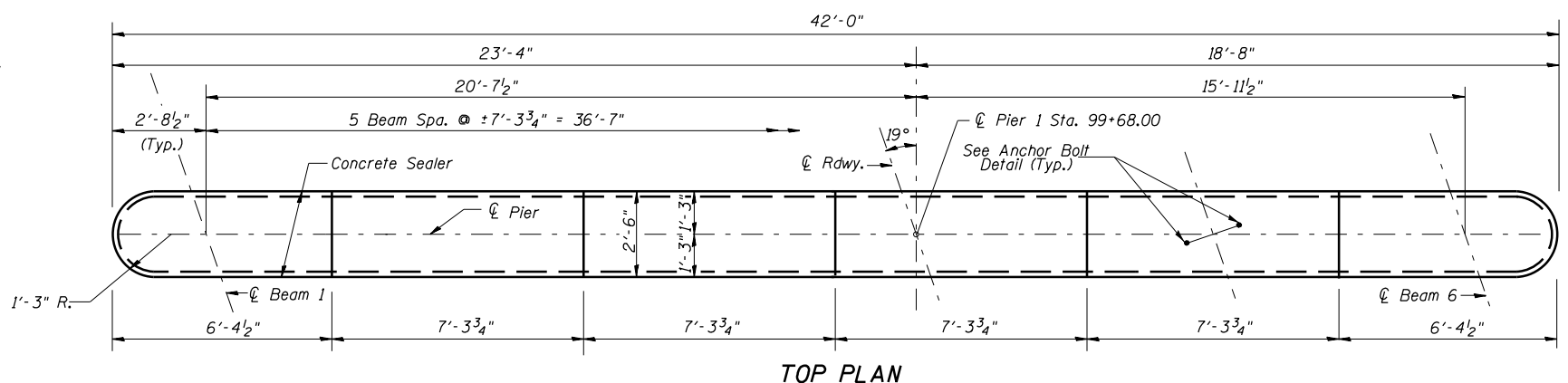
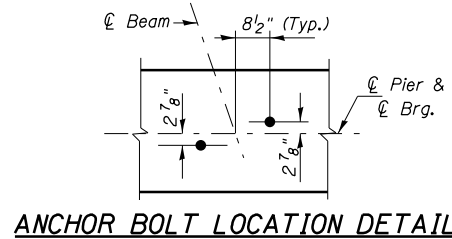


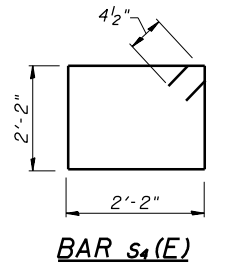
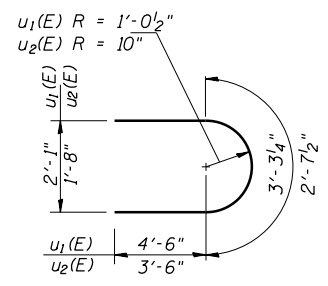
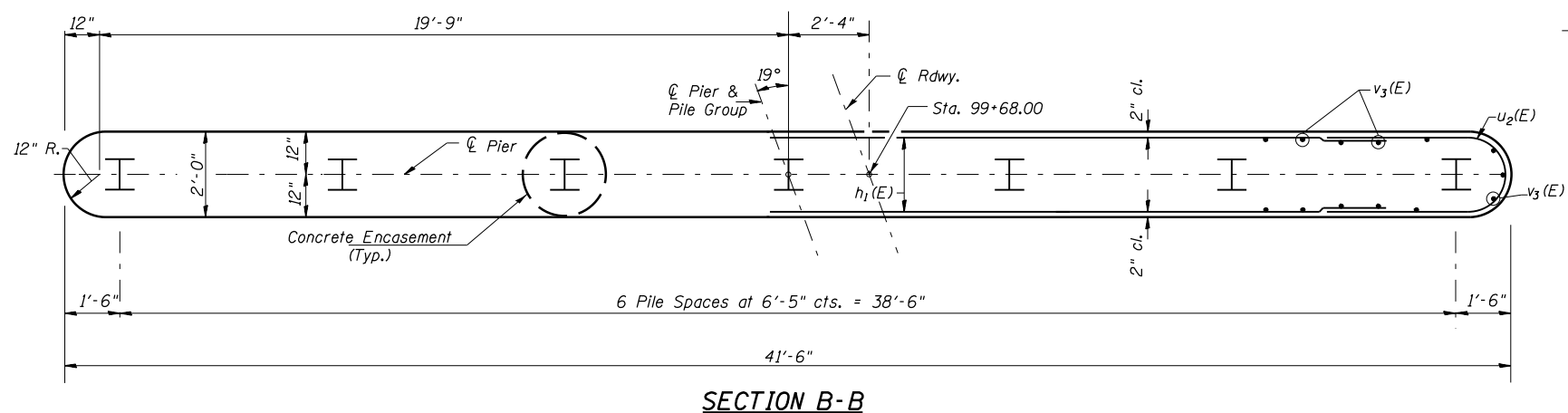
NOTES:
 All edges shall have standard $\frac{3}{4}$ " chamfer.
 Concrete Sealer shall be applied to the exposed vertical face and top of the pier.
 Pour steps monolithically with cap.
 Space reinforcement in cap to miss anchor bolts.



BILL OF MATERIAL

BAR	NO.	SIZE	LENGTH	SHAPE
$h_1(E)$	34	#5	39'-6"	—
$p_1(E)$	10	#7	39'-6"	—
$s_4(E)$	44	#4	9'-5"	□
$u_1(E)$	6	#6	12'-3"	⌒
$u_2(E)$	34	#5	9'-8"	⌒
$v_3(E)$	86	#5	17'-4"	—
Concrete Structures			Cu. Yd.	58.5
Reinforcement Bars, Epoxy Coated			Pound	4,490
Structure Excavation			Cu. Yd.	14
Furnishing Steel Piles HP12x53			Foot	384
Driving Piles			Foot	384
Test Pile Steel HP12x53			Each	1
Concrete Encasement			Cu. Yd.	2.4
Concrete Sealer			Sq. Ft.	1,590

PILE DATA
 Type & Size: HP12x53 Steel Pile
 Nominal Required Bearing: 405 kips
 Allowable Resistance Available: 135 kips
 Est. Length: 64'
 No. Req'd.: 6 Plus 1 Test Pile



DESIGNED	BAN
CHECKED	JOH
DRAWN	TD & TC
CHECKED	BAN

PIER #1
 MOUND ROAD (FAU ROUTE 8173)
 OVER ILLINOIS ROUTE 104
 SECTION (69-HB)BR
 MORGAN COUNTY
 STATION 100+00.00
 STRUCTURE NO. 069-0521

HU CHISON ENGINEERING, INC.
 JACKSONVILLE, ILLINOIS
 Date: 12/21/07