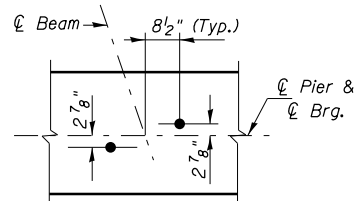
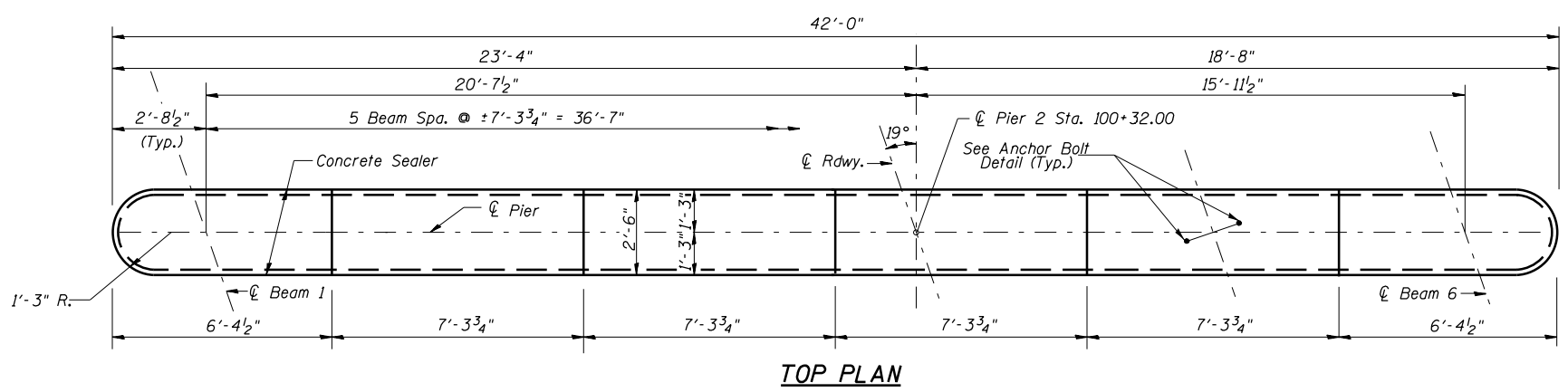


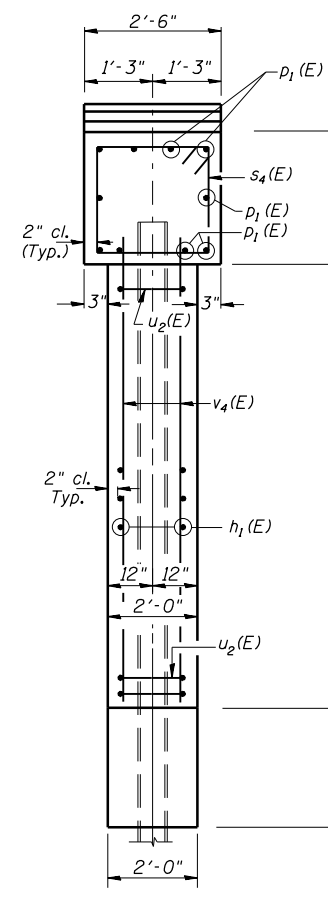
NOTES:
 All edges shall have standard $\frac{3}{4}$ " chamfer.
 Concrete Sealer shall be applied to the exposed vertical face and top of the pier.
 Four steps monolithically with cap.
 Space reinforcement in cap to miss anchor bolts.



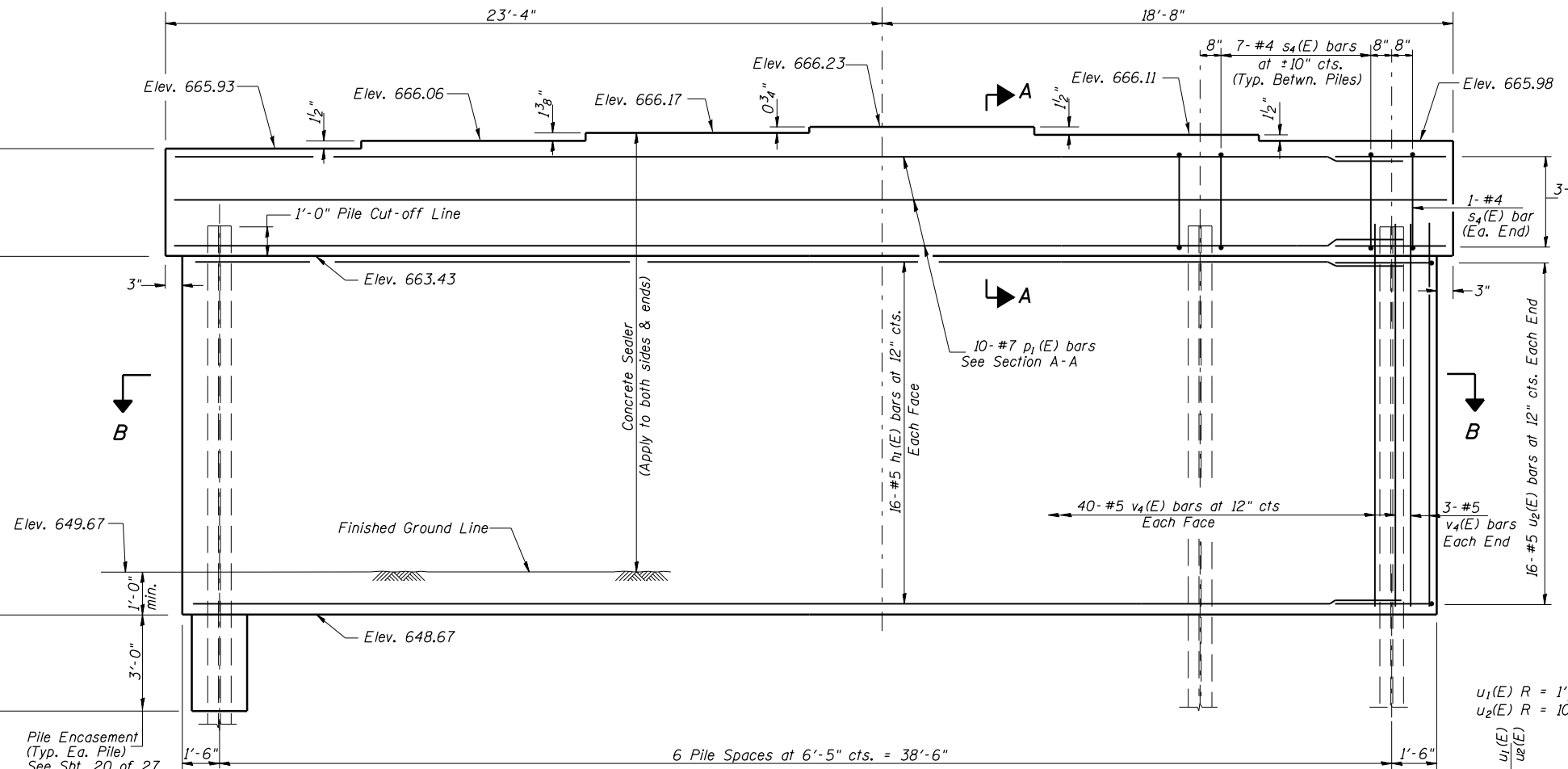
ANCHOR BOLT LOCATION DETAIL



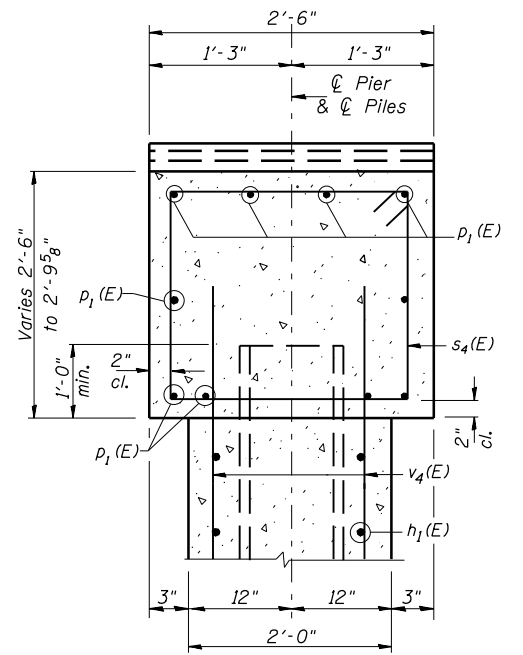
TOP PLAN



END VIEW



ELEVATION
(Looking East)



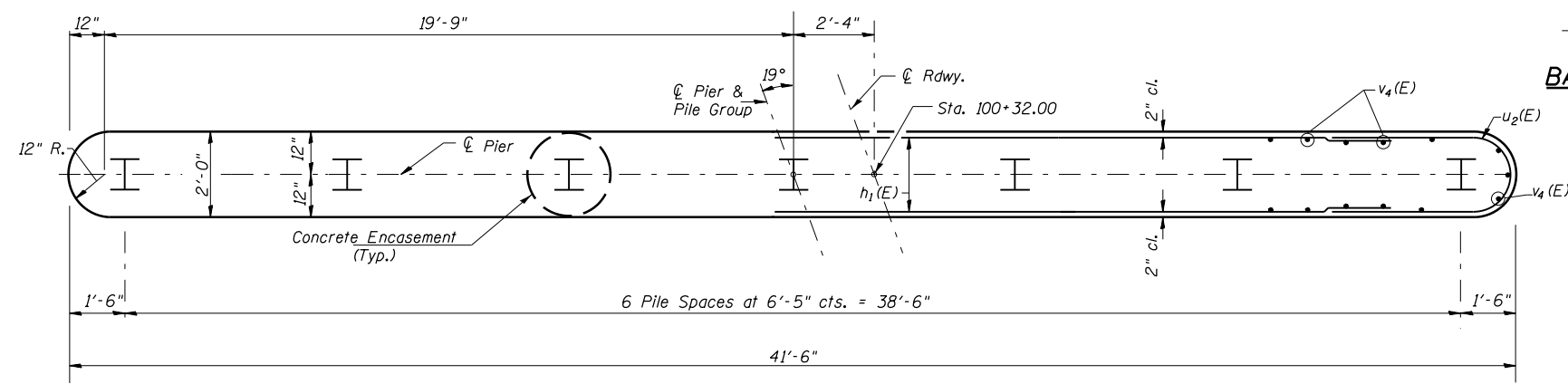
SECTION A-A

BILL OF MATERIAL

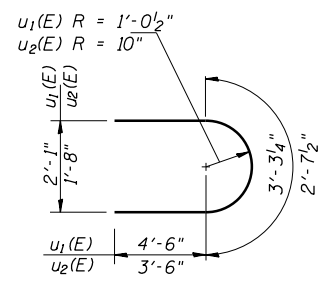
BAR	NO.	SIZE	LENGTH	SHAPE
$h_1(E)$	32	#5	39'-6"	—
$p_1(E)$	10	#7	39'-6"	—
$s_4(E)$	44	#4	9'-5"	□
$u_1(E)$	6	#6	12'-3"	U
$u_2(E)$	32	#5	9'-8"	U
$v_4(E)$	86	#5	16'-3"	—
Concrete Structures		Cu. Yd.	55.1	
Reinforcement Bars, Epoxy Coated		Pound	4,290	
Structure Excavation		Cu. Yd.	14	
Furnishing Steel Piles HP12x53		Foot	552	
Driving Piles		Foot	552	
Test Pile Steel HP12x53		Each	1	
Concrete Encasement		Cu. Yd.	2.4	
Concrete Sealer		Sq. Ft.	1,490	

PILE DATA
 Type & Size: HP12x53 Steel Pile
 Nominal Required Bearing: 405 kips
 Allowable Resistance Available: 135 kips
 Est. Length: 92'
 No. Req'd.: 6 Plus 1 Test Pile

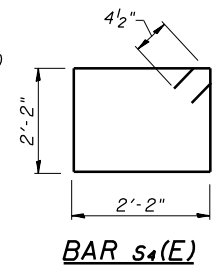
DESIGNED	BAN
CHECKED	JOH
DRAWN	TD & TC
CHECKED	BAN



SECTION B-B



BAR $u_1(E)$ & $u_2(E)$



BAR $s_4(E)$

PIER #2
 MOUND ROAD (FAU ROUTE 8173)
 OVER ILLINOIS ROUTE 104
 SECTION (69-HB)BR
 MORGAN COUNTY
 STATION 100+00.00
 STRUCTURE NO. 069-0521

HU CHISON ENGINEERING, INC.
 JACKSONVILLE, ILLINOIS
 Date: 12/21/07