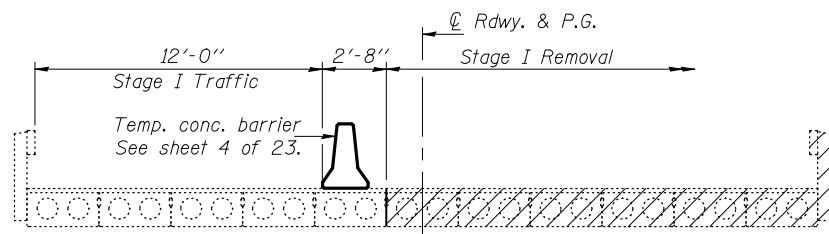
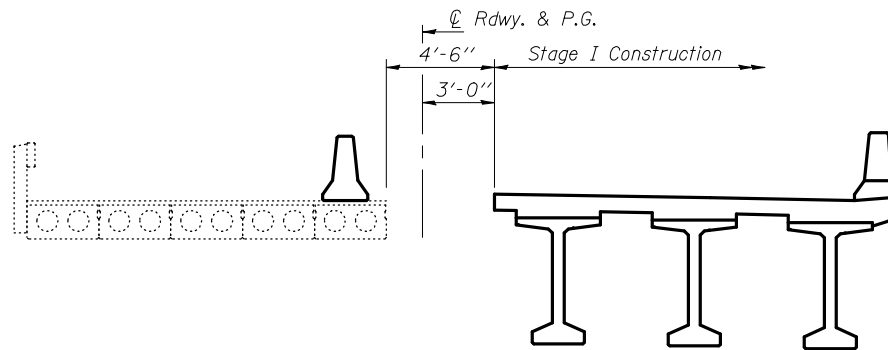


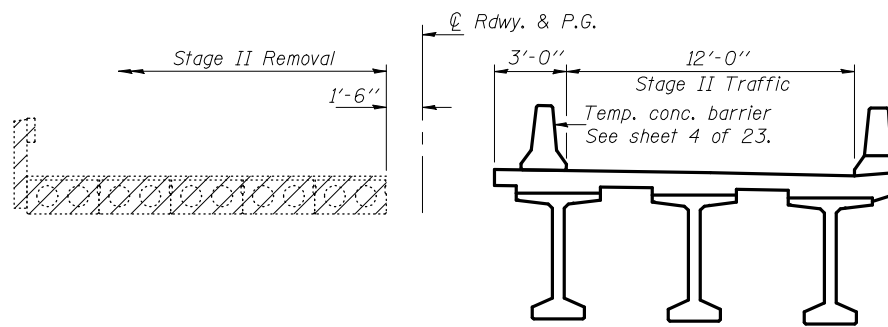
STATE OF ILLINOIS  
DEPARTMENT OF TRANSPORTATION



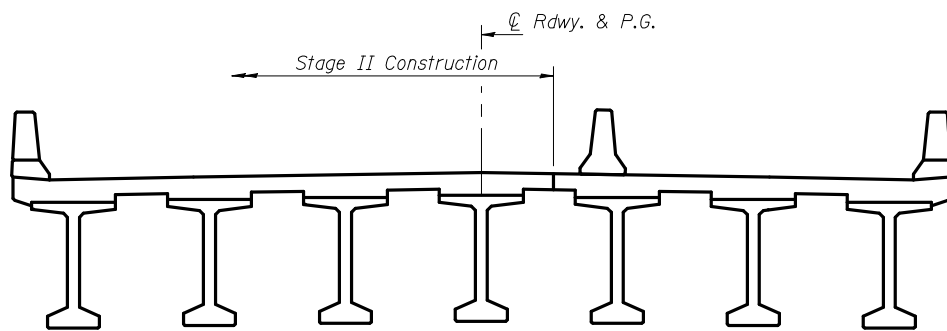
**STAGE I REMOVAL**



**STAGE I CONSTRUCTION**



**STAGE II REMOVAL**



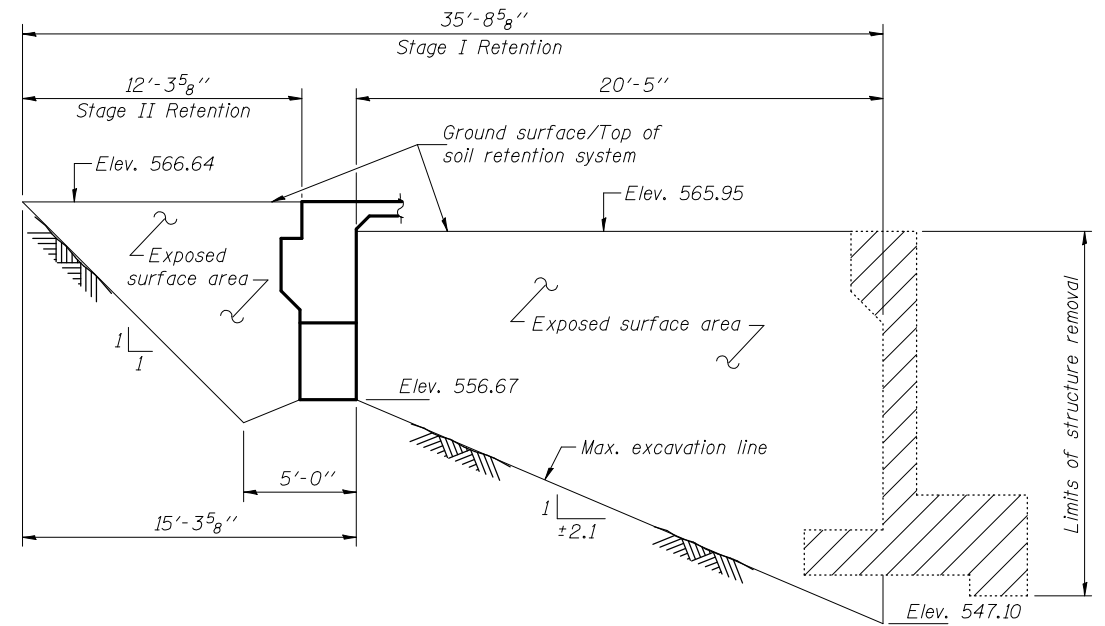
**STAGE II CONSTRUCTION**

Notes: Hatched area indicates Removal of Existing Structures.  
For quantity of Temporary Concrete Barrier, see Roadway Plans.  
All staging cross sections are looking south.

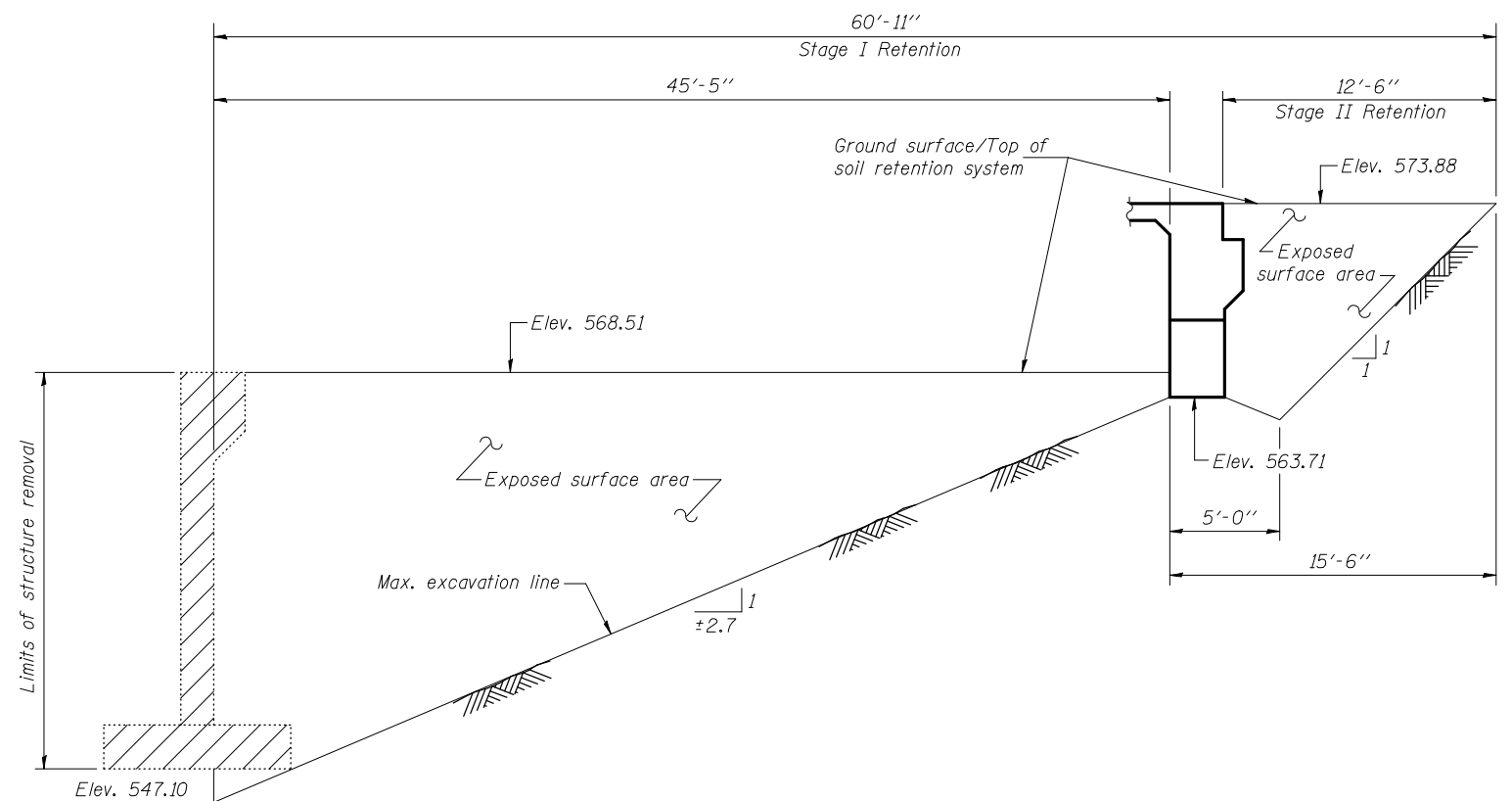
DESIGNED	Fess Teklehaimanot
CHECKED	Stephen M. Ryan
DRAWN	h.t. duong
CHECKED	FT/SMR

EXAMINED	November 24, 2010
PASSED	Thomas J. Domagalick ENGINEER OF BRIDGE DESIGN
	Ralph E. Anderson ENGINEER OF BRIDGES AND STRUCTURES

Note: A cantilevered sheet piling design does not appear feasible and additional members or other retention systems may be necessary. The Contractor shall submit a temporary soil retention system design including plan details and calculations for review and acceptance by the Engineer.



**TEMPORARY SOIL RETENTION SYSTEM AT NORTH ABUTMENT**



**TEMPORARY SOIL RETENTION SYSTEM AT SOUTH ABUTMENT**

**STAGE CONSTRUCTION DETAILS  
STRUCTURE NO. 034-0522**

SHEET NO. 3 23 SHEETS	F.A.P. RTE.	SECTION	COUNTY	TOTAL SHEETS	SHEET NO.
	506	123B-1	HANCOCK	37	70
CONTRACT NO. 72992					
ILLINOIS FED. AID PROJECT					