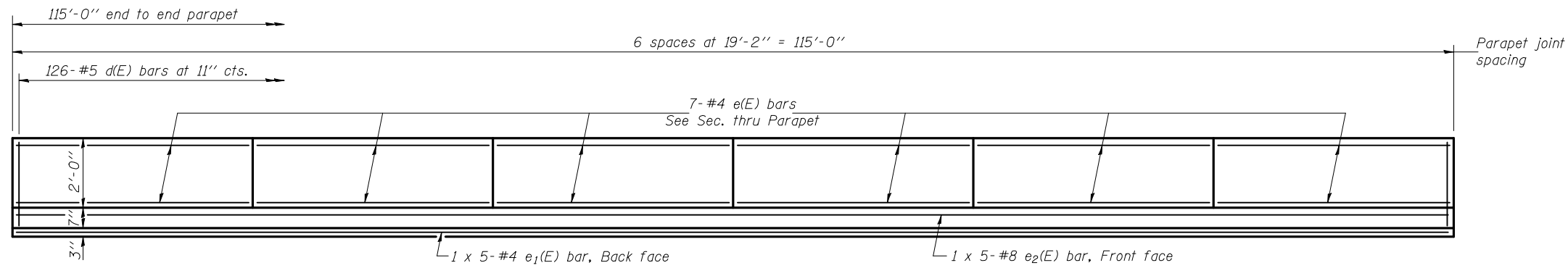
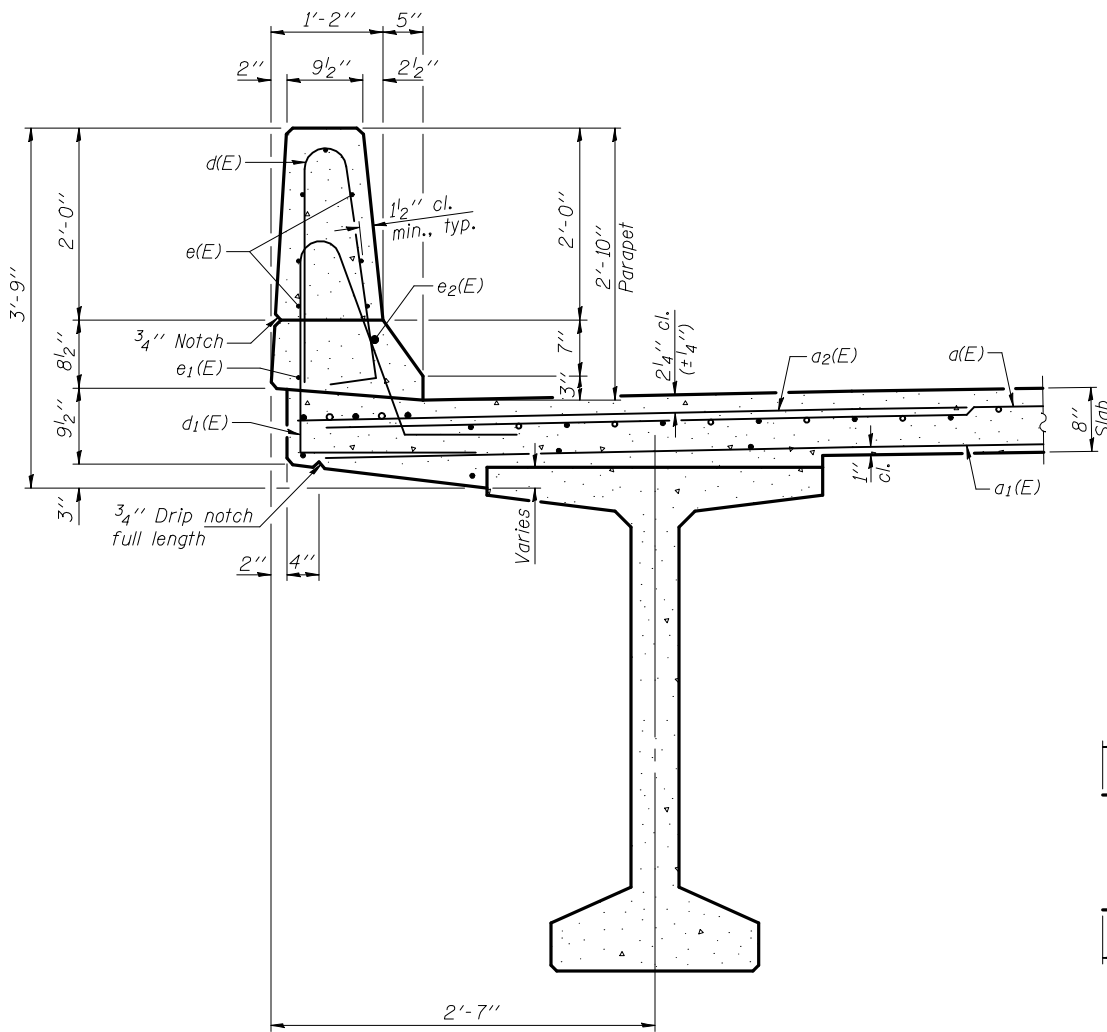


STATE OF ILLINOIS  
DEPARTMENT OF TRANSPORTATION

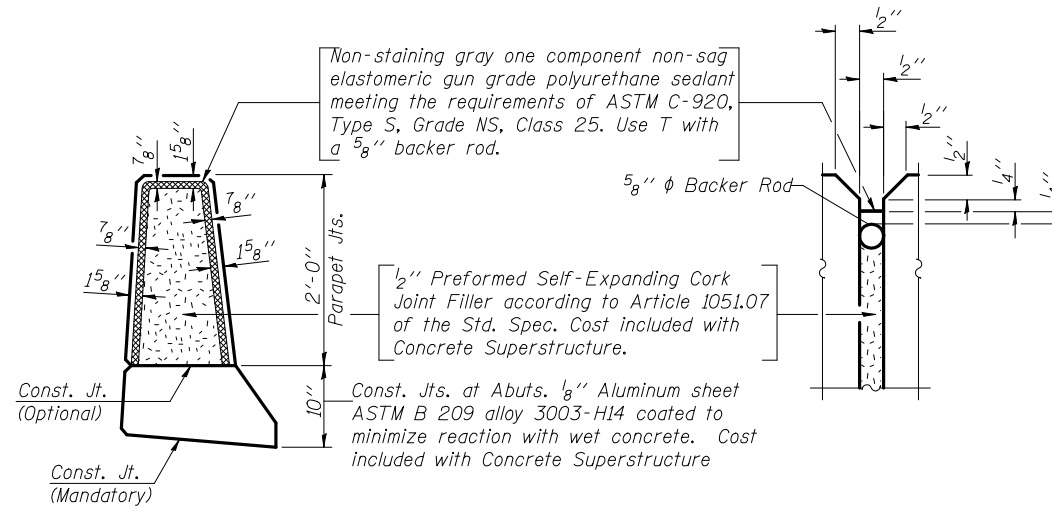


INSIDE ELEVATION OF PARAPET

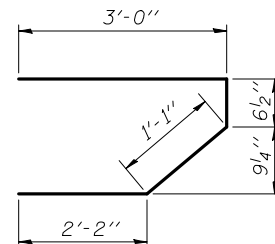
**MINIMUM BAR LAP**  
(Parapet)  
#4 bar = 2'-0"  
#8 bar = 5'-2"



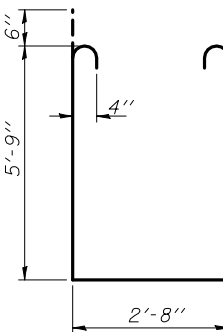
SECTION THRU PARAPET



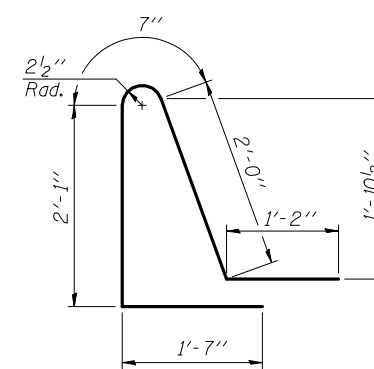
PARAPET JOINT DETAILS



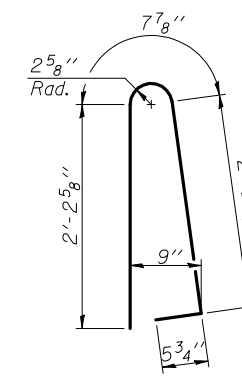
BAR s(E)



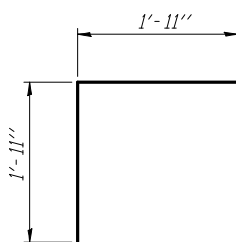
BAR s1(E)



BAR d1(E)



BAR d(E)



BAR v(E)

**SUPERSTRUCTURE  
BILL OF MATERIAL**

Bar	No.	Size	Length	Shape
a(E)	198	#5	16'-1"	—
a1(E)	138	#5	15'-6"	—
a2(E)	396	#6	6'-6"	—
a3(E)	198	#5	22'-1"	—
a4(E)	138	#5	21'-6"	—
b(E)	210	#5	25'-0"	—
b1(E)	164	#5	30'-8"	—
d(E)	252	#5	5'-7"	┌
d1(E)	252	#5	7'-5"	┌
e(E)	84	#4	18'-10"	—
e1(E)	10	#4	24'-7"	—
e2(E)	10	#8	27'-1"	—
m(E)	12	#6	16'-3"	—
m1(E)	30	#6	9'-0"	—
m2(E)	10	#6	3'-3"	—
m3(E)	6	#6	1'-3"	—
m4(E)	2	#6	1'-8"	—
m5(E)	6	#6	7'-0"	—
m6(E)	6	#6	7'-3"	—
m7(E)	12	#6	22'-3"	—
s(E)	72	#5	6'-10"	┘
s1(E)	48	#4	15'-2"	┘
v(E)	78	#5	3'-10"	└
Reinforcement Bars, Epoxy Coated			Lbs.	35760
Concrete Superstructure			Cu. Yds.	193.0

Bars indicated thus 1 x 5-#8 etc. indicates 1 line of bars with 5 lengths per line.

**SUPERSTRUCTURE DETAILS  
STRUCTURE NO. 034-0522**

DESIGNED *Fess Teklehaimanot*  
CHECKED *Stephen M. Ryan*  
DRAWN *h.t. duong*  
CHECKED *FT/SMR*

November 24, 2010  
EXAMINED *Thomas J. Domagala*  
PASSED *Ralph E. Anderson*  
ENGINEER OF BRIDGE DESIGN  
ENGINEER OF BRIDGES AND STRUCTURES

SHEET NO. 11 23 SHEETS	F.A.P. RTE.	SECTION	COUNTY	TOTAL SHEETS	SHEET NO.
	506	123B-1	HANCOCK	45	70
CONTRACT NO. 72992					
ILLINOIS FED. AID PROJECT					