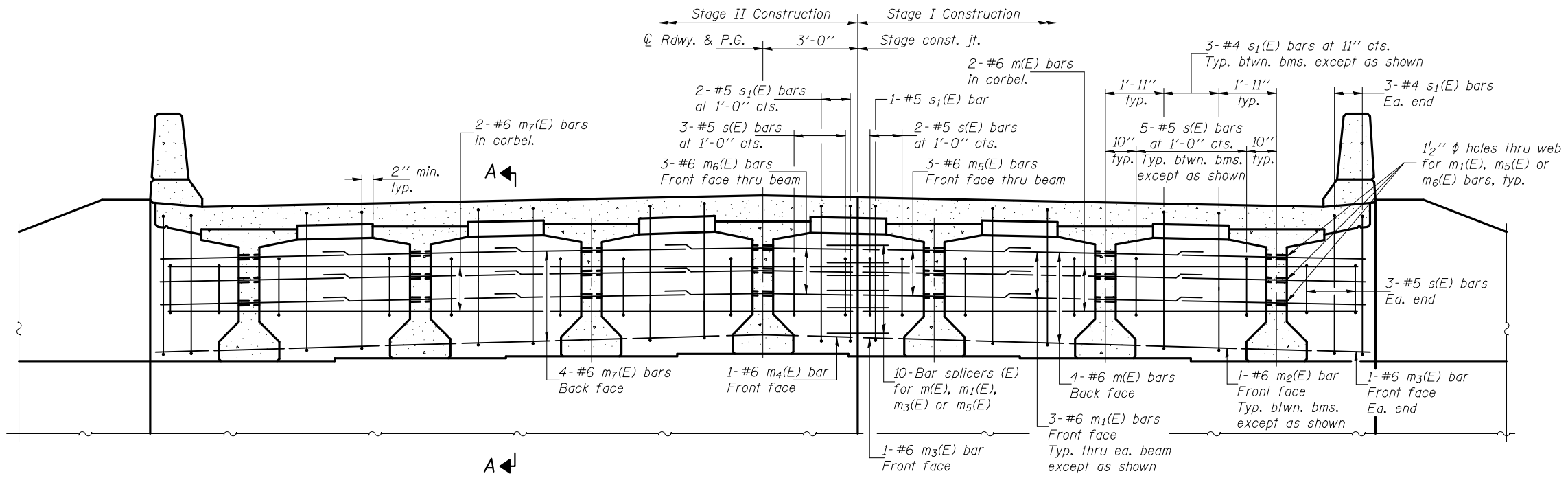


STATE OF ILLINOIS  
DEPARTMENT OF TRANSPORTATION

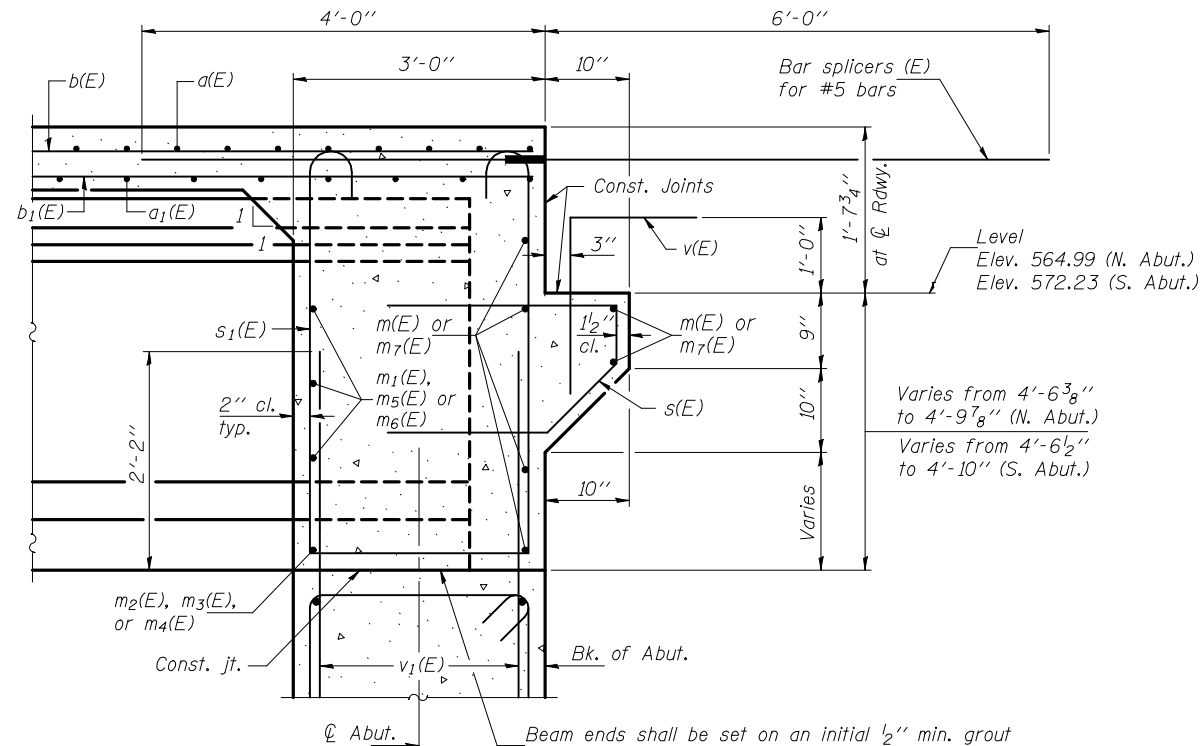


**MIN. BAR LAP**  
#6 bar = 3'-4"

**DIAPHRAGM ELEVATION AT SOUTH ABUTMENT**

(Looking south - North abutment similar)

Notes: Reinforcement bars in diaphragm are billed with superstructure on sheet 11 of 23.  
Concrete in diaphragm is included with Concrete Superstructure on sheet 11 of 23.  
For details of bars s(E), s1(E) and s2(E) see sheet 11 of 23.  
The s(E), s1(E) and s2(E) bars shall be placed parallel to the beams.  
Spacing for these bars shall be at right angles to the beams.



Beam ends shall be set on an initial 1/2" min. grout (2:1 sand and portland cement, very dry mix) to provide full bearing. Any excess grout squeezed out from under the beam shall be removed. Cost included with Concrete Structures.

**SECTION A-A**

**DIAPHRAGM DETAILS  
STRUCTURE NO. 034-0522**

DESIGNED	Fess Teklehaimanot
CHECKED	Stephen M. Ryan
DRAWN	h.t. duong
CHECKED	FT/SMR

EXAMINED	Thomas J. Domagala ENGINEER OF BRIDGE DESIGN
PASSED	Ralph E. Anderson ENGINEER OF BRIDGES AND STRUCTURES

SHEET NO. 12 23 SHEETS	F.A.P. RTE.	SECTION	COUNTY	TOTAL SHEETS	SHEET NO.
	506	123B-1	HANCOCK	46	70
CONTRACT NO. 72992					
ILLINOIS FED. AID PROJECT					