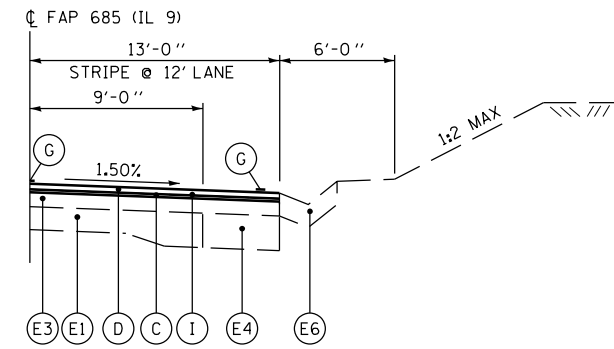


FAP 685 (IL 9) TYPICAL GUARDRAIL SECTION

STA 1171+25 TO STA 1173+81	LT
STA 1190+00 TO STA 1200+94	RT
STA 1193+20 TO STA 1194+39	LT
STA 1207+20 TO STA 1209+26	RT
STA 1207+10 TO STA 1209+16	LT
STA 1225+65 TO STA 1232+46	RT
STA 1232+05 TO STA 1234+61	LT

NOTE:

- 1) STATIONS ARE APPROXIMATE AND SHOULD BE FIELD VERIFIED
- PROPOSED HMA SHOULDERS BEGIN AT STATION 1224+00

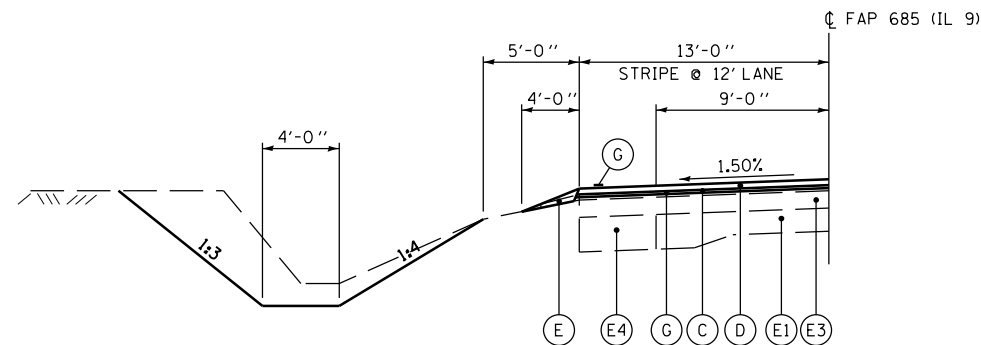


FAP 685 (IL 9) TYPICAL GUTTER SECTION

STA 1175+65 TO STA 1186+35	RT
STA 1179+52 TO STA 1185+70	LT
STA 1232+96 TO STA 1238+42	RT
STA 1234+74 TO STA 1238+42	LT

NOTE:

- 1) STATIONS ARE APPROXIMATE AND SHOULD BE FIELD VERIFIED



FAP 685 (IL 9) TYPICAL DITCH SECTION

STA 1102+00.00 TO STA 1110+00.00 LT

LEGEND

- (E1) EXISTING PCC PAVEMENT (9'-6"-9'-9")
- (E2) EXISTING HOT-MIX ASPHALT SURFACE COURSE, 1 1/2" ±
- (E3) EXISTING HOT-MIX ASPHALT SURFACING, 4 1/2" ±
- (E4) EXISTING HOT-MIX ASPHALT BASE COURSE WIDENING, 9"
- (E5) EXISTING AGGREGATE SHOULDERS
- (E6) EXISTING GUTTER
- (E7) EXISTING GUARDRAIL

- (A) PR HMA BASE COURSE WIDENING, 10"
- (B) PR HMA BINDER COURSE, VARIABLE DEPTH (2 1/4" MIN)
- (C) PR LEVELING BINDER (MACHINE METHOD), 3/4" & VARIES
- (D) PR HMA SURFACE COURSE, 1 1/2"
- (E) PR AGGREGATE SHOULDERS, TYPE B, VARIABLE DEPTH
- (F) PR AGGREGATE SHOULDERS, TYPE B (SPECIAL), VARIABLE DEPTH
- (G) PR PAVEMENT MARKING, LINE - 5"
- (H) PR HMA SURFACE REMOVAL, 3/4" & VARIES (PAID AS VARIABLE DEPTH)
- (I) PR HMA SURFACE REMOVAL, 2 1/4" & VARIES
- (J) PR STEEL PLATE BEAM GUARDRAIL (SEE SCHEDULE FOR LOCATIONS)
- (K) PR HMA SHOULDERS, 8"

FILE NAME =	USER NAME = laughlinc1	DESIGNED -	REVISED -	STATE OF ILLINOIS DEPARTMENT OF TRANSPORTATION	TYPICAL SECTIONS			F.A.P. RTE.	SECTION	COUNTY	TOTAL SHEETS	SHEET NO.
c:\pwork\pwork\laughlinc1\024497\0672805-sh-typical.dgn		DRAWN -	REVISED -		685	(117,118)RS-4,119RS-1; 118B-1	HANCOCK	101	14			
	PLOT SCALE = 100.0000' / 1"	CHECKED -	REVISED -		CONTRACT NO. 72B05							
	PLOT DATE = Nov-03-2010 11:31:27AM	DATE -	REVISED -		SCALE: none	SHEET NO. 3 OF 3 SHEETS	STA. TO STA.	FED. ROAD DIST. NO.	ILLINOIS FED. AID PROJECT			