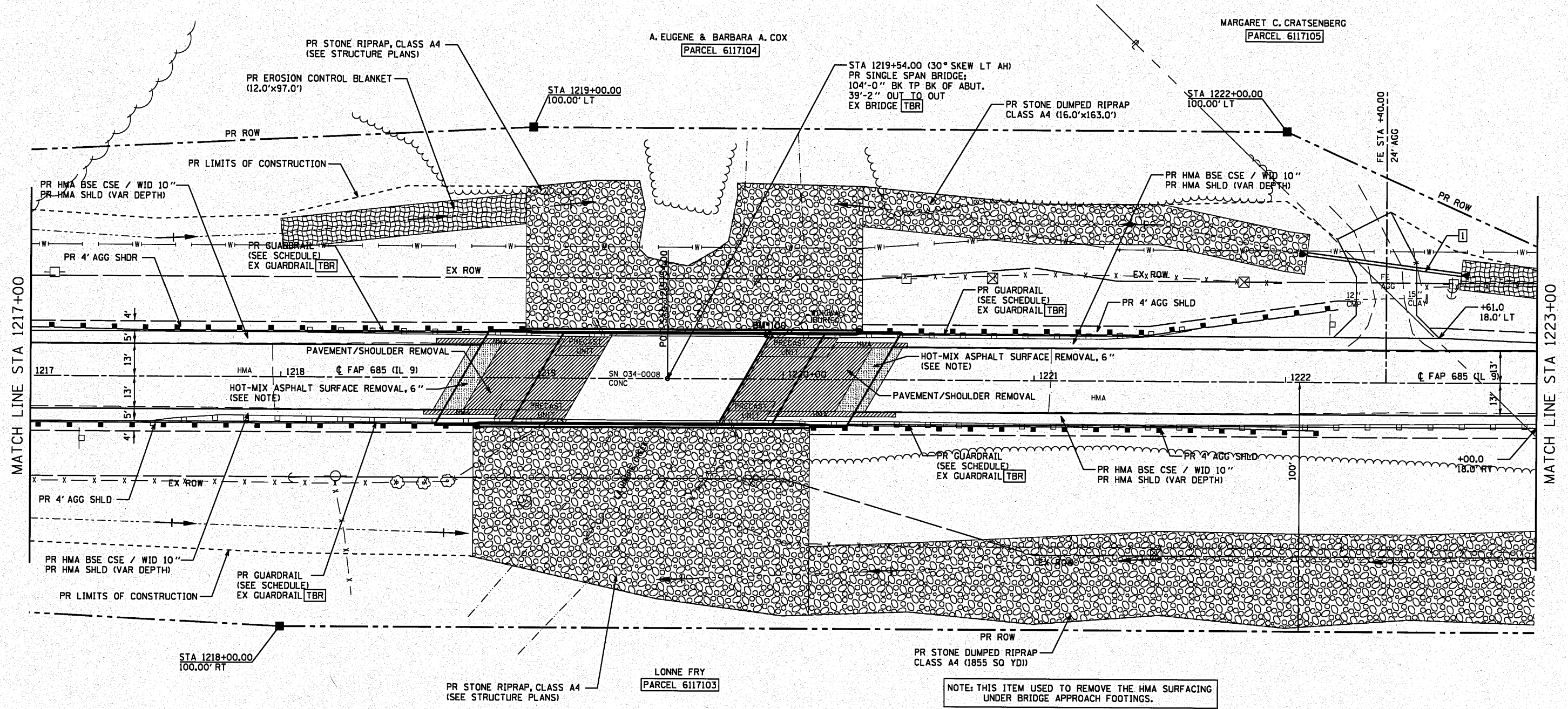
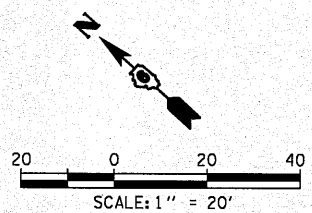


1 STA 1222+40.47.2' LT
 PR PIPE CULVERT, CLASS D, TY 1, 15" X 62"
 METAL END SECTIONS, 2 EACH (STD 542401)
 USFL = 660.30, STA 1222+69.8, 43.3' LT
 DSFL = 659.37, STA 1222+08.3, 51.3' LT
 EX 12"/15" X 32.7' CMP/CLAY TBR



NOTE: THIS ITEM USED TO REMOVE THE HMA SURFACING UNDER BRIDGE APPROACH FOOTINGS.

BM*100 - FOUND RR SPIKE IN TOP OF SE
 ABUT S.N. 034-0008 @ LAHARPE CREEK
 STA 1219+93.84, 17.89' LT ELEV = 662.17



FILE NAME =	USER NAME = laughlinr1	DESIGNED -	REVISED -	STATE OF ILLINOIS DEPARTMENT OF TRANSPORTATION	PLAN SHEET	F.A.P. RTE.	SECTION	COUNTY	TOTAL SHEETS	SHEET NO.
et:\pwork\pwidot\laughlinr1\0244977\0672805-shs-Plan02.dgn	DRAWN -	REVISED -	685			1117.1181RS-4.119RS-1; 118B-1	HANCOCK	101	33	
PLOT SCALE = 40.0000' / in.	CHECKED -	REVISED -	CONTRACT NO. 72B05							
PLOT DATE = Dec-03-2010 08:10:51AM	DATE -	REVISED -	ILLINOIS FED. AID PROJECT							