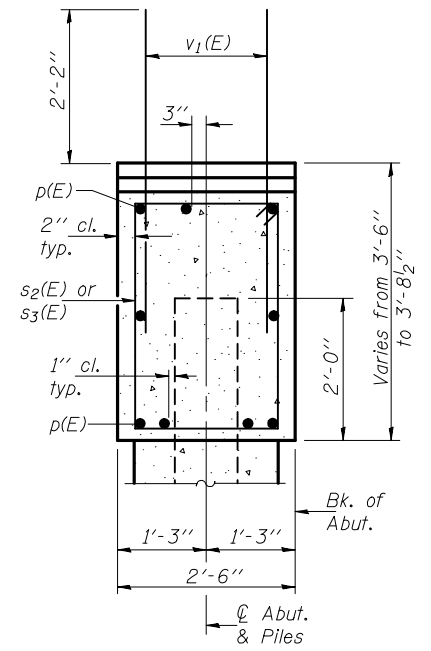
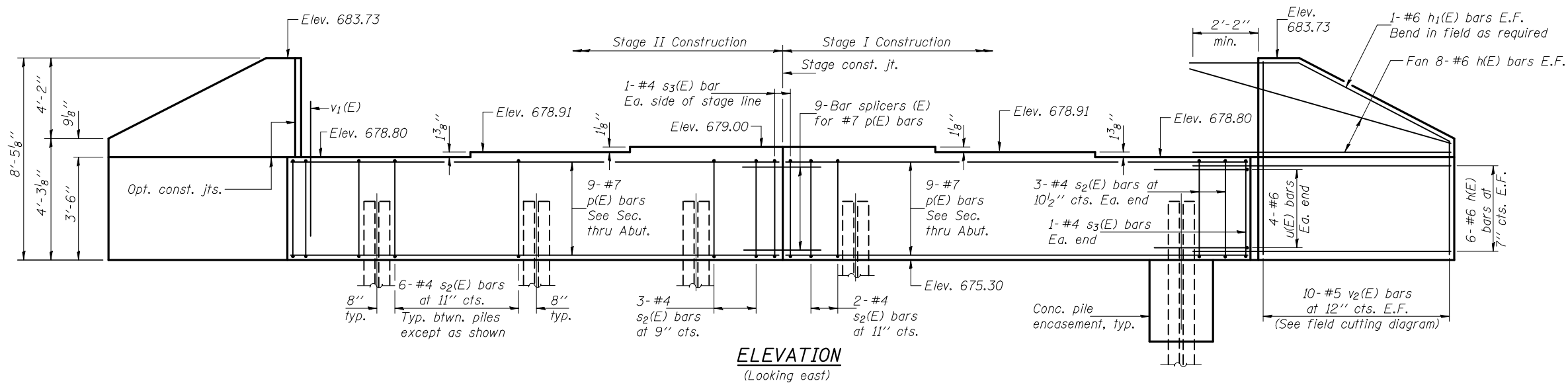
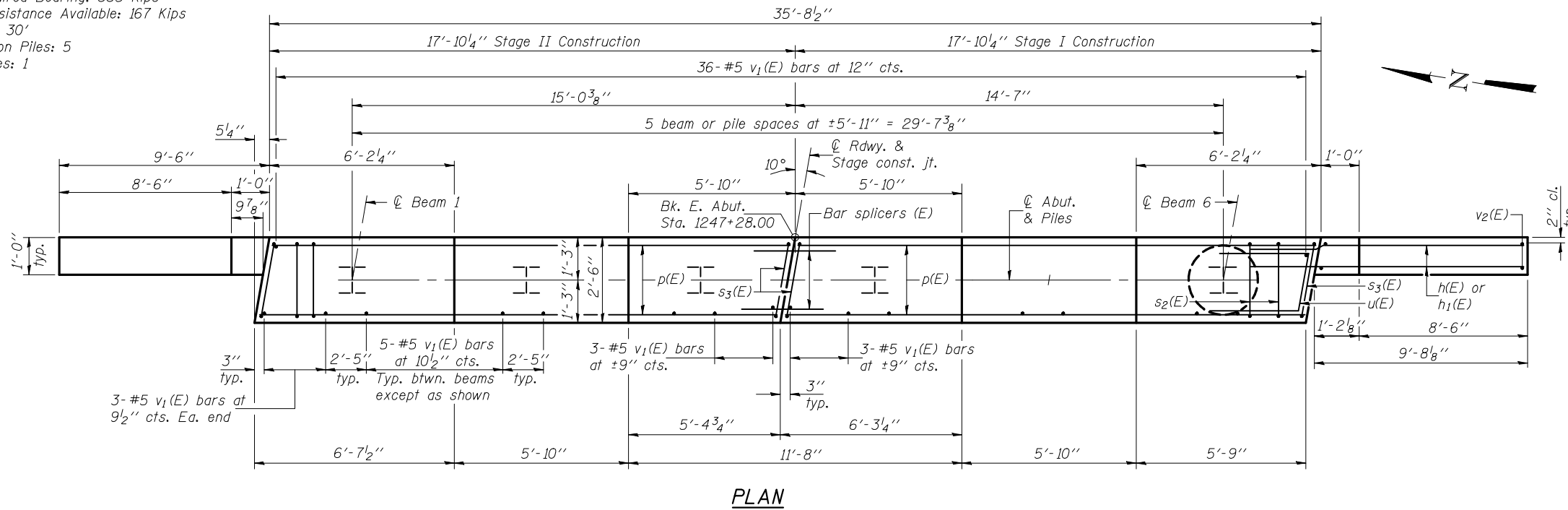


STATE OF ILLINOIS
DEPARTMENT OF TRANSPORTATION

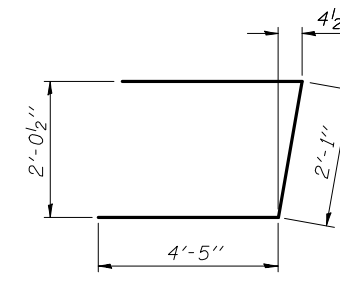
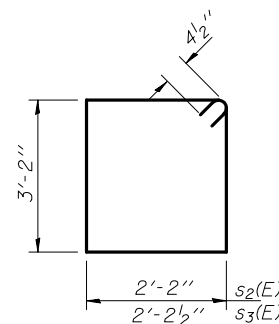
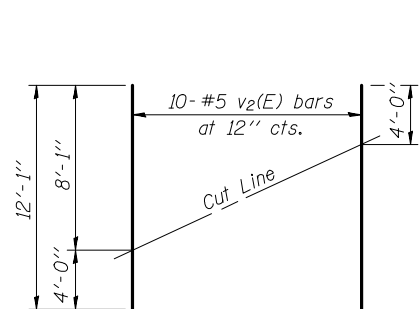


PILE DATA

Type: Steel HP10x42
Nominal Required Bearing: 335 Kips
Factored Resistance Available: 167 Kips
Est. Length: 30'
No. Production Piles: 5
No. Test Piles: 1



Notes: Pour steps monolithically with cap.
For details of piles and concrete encasement,
see sheet 19 of 21.
For details of bar splicers, see sheet 18 of 21.



BILL OF MATERIAL

Bar	No.	Size	Length	Shape
h(E)	56	#6	12'-1"	—
h ₁ (E)	4	#6	13'-7"	—
p(E)	18	#7	17'-6"	—
s ₂ (E)	35	#4	11'-5"	□
s ₃ (E)	4	#4	11'-6"	□
u(E)	8	#6	10'-11"	┘
v ₁ (E)	68	#5	4'-4"	—
v ₂ (E)	20	#5	12'-1"	—
Structure Excavation			Cu. Yd.	85
Concrete Structures			Cu. Yd.	16.5
Reinforcement Bars, Epoxy Coated			Pound	2730
Furnishing Steel Piles HP10x42			Foot	150
Driving Piles			Foot	150
Test Pile Steel HP10x42			Each	1
Concrete Encasement			Cu. Yd.	2.1

DESIGNED	Phillip E. Coppernoll
CHECKED	Justin T. Belue
DRAWN	h.t. duong
CHECKED	PEC/JTB

EXAMINED	December 6, 2010
THOMAS J. DOMAGALSKI	ENGINEER OF BRIDGE DESIGN
PASSED	ROBERT E. ANDERSON
	ENGINEER OF BRIDGES AND STRUCTURES

FIELD CUTTING DIAGRAM

Order v₂(E) full length. Cut as shown and use remainder of bars in opposite face.

**EAST ABUTMENT
STRUCTURE NO. 001-0507**

SHEET NO. 17 21 SHEETS	F.A.P. RTE.	SECTION	COUNTY	TOTAL SHEETS	SHEET NO.
	745	107B-1	ADAMS	86	51
			CONTRACT NO. 72B98		
FED. ROAD DIST. NO. _ ILLINOIS FED. AID PROJECT					