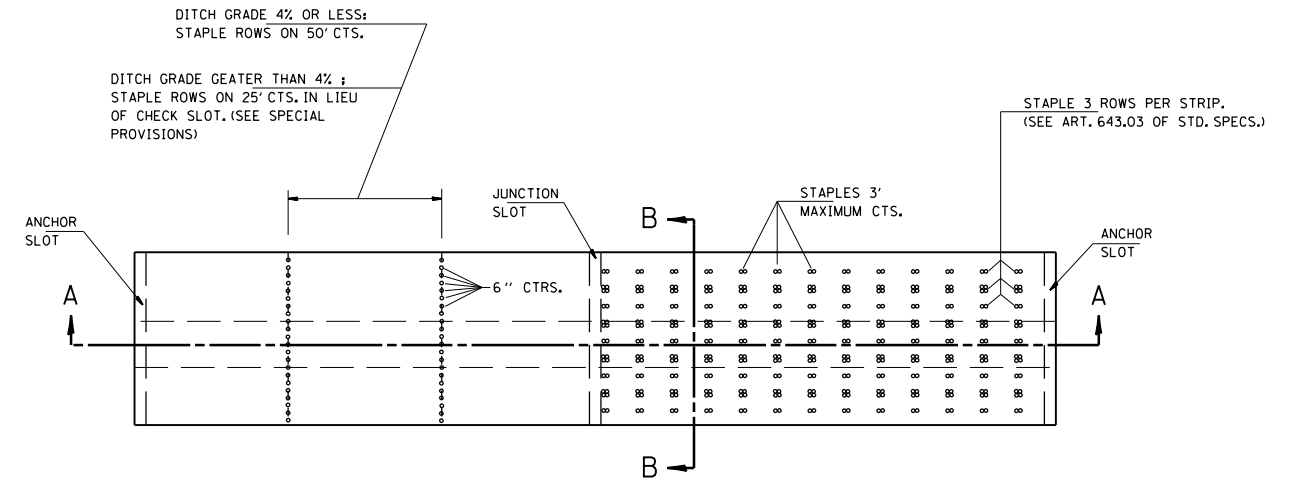


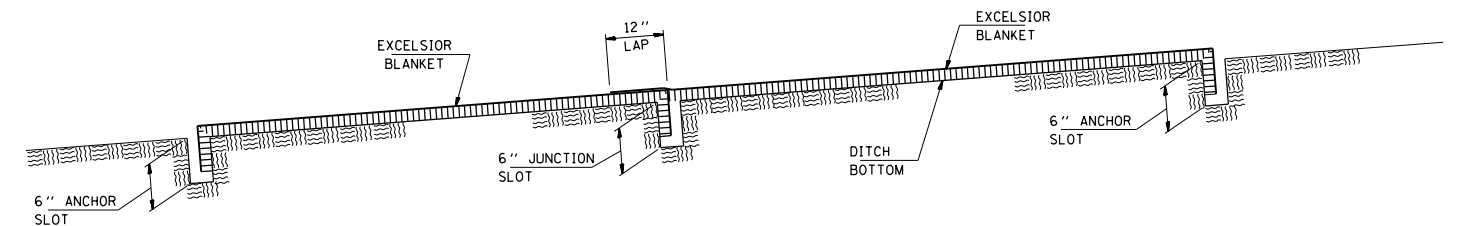
* FOR SLOPE SEE CROSS SECTIONS

AGGREGATE DITCH DETAIL

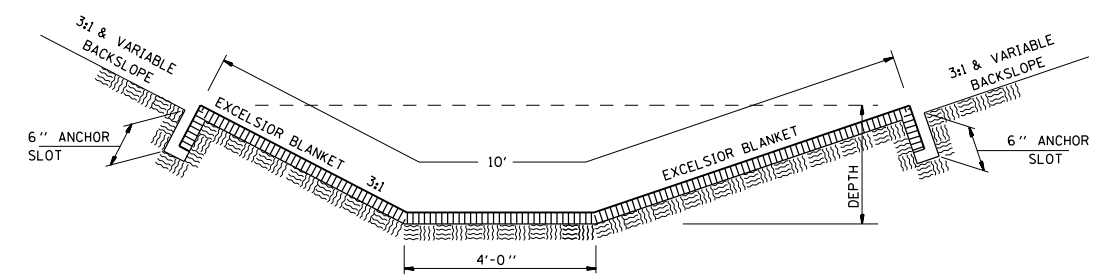
NOTE 1: THE WIDTH SHOWN IS THE OUT TO OUT HORIZONTAL DIMENSION OF THE PROPOSED RIPRAP PLACEMENT. THE QUANTITY FOR THE STONE DUMPED RIPRAP AND FILTER FABRIC IS CALCULATED USING THE SUM OF THE DITCH BOTTOM WIDTH AND THE SLOPE DIMENSIONS OF THE FORESLOPE AND THE BACKSLOPE.



PLAN VIEW & STAPLING LAYOUT FOR EXCELSIOR BLANKET PLACEMENT IN DITCH



EXCELSIOR BLANKET SECTION A - A



EXCELSIOR BLANKET SECTION B - B

FILE NAME =	USER NAME = laughlinc1	DESIGNED -	REVISED -
et:\pw\work\pwidot\laughlinc1\0215213\0672898-shit-details.dgn		DRAWN - CADD	REVISED -
EXCELSIOR.DGN	PLOT SCALE = 80.0000' / in.	CHECKED -	REVISED -
	PLOT DATE = Oct-14-2010 09:43:41AM	DATE - JULY 14, 1989	REVISED -

**STATE OF ILLINOIS
DEPARTMENT OF TRANSPORTATION**

**IL 104 OVER GRINDSTONE CREEK
EROSION CONTROL DETAIL**

SCALE: SHEET NO. OF SHEETS STA. TO STA.

F.A.P. RTE.	SECTION	COUNTY	TOTAL SHEETS	SHEET NO.
745	107B-1	ADAMS	86	61
ILLINOIS FED. AID PROJECT			CONTRACT NO. 72B98	