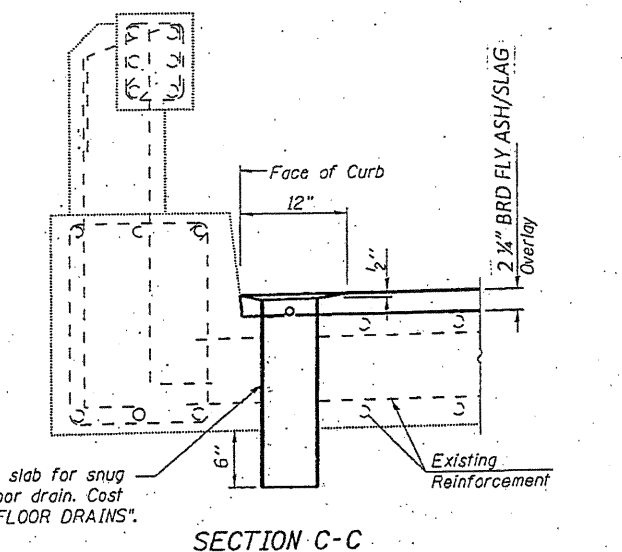
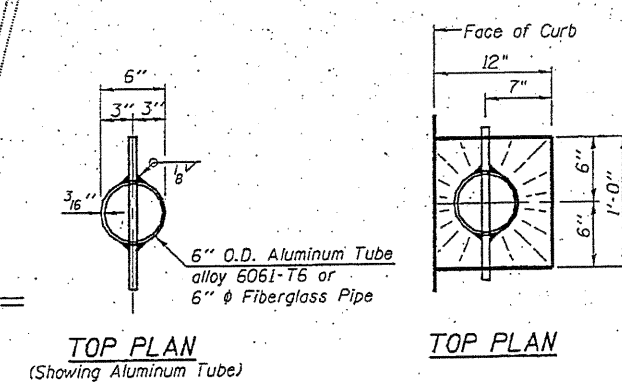
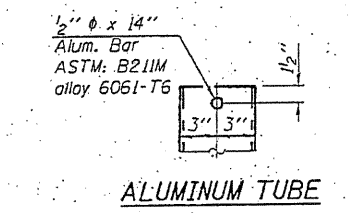
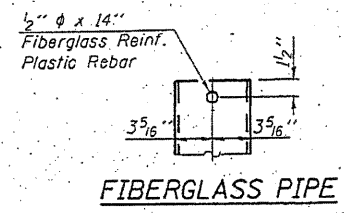
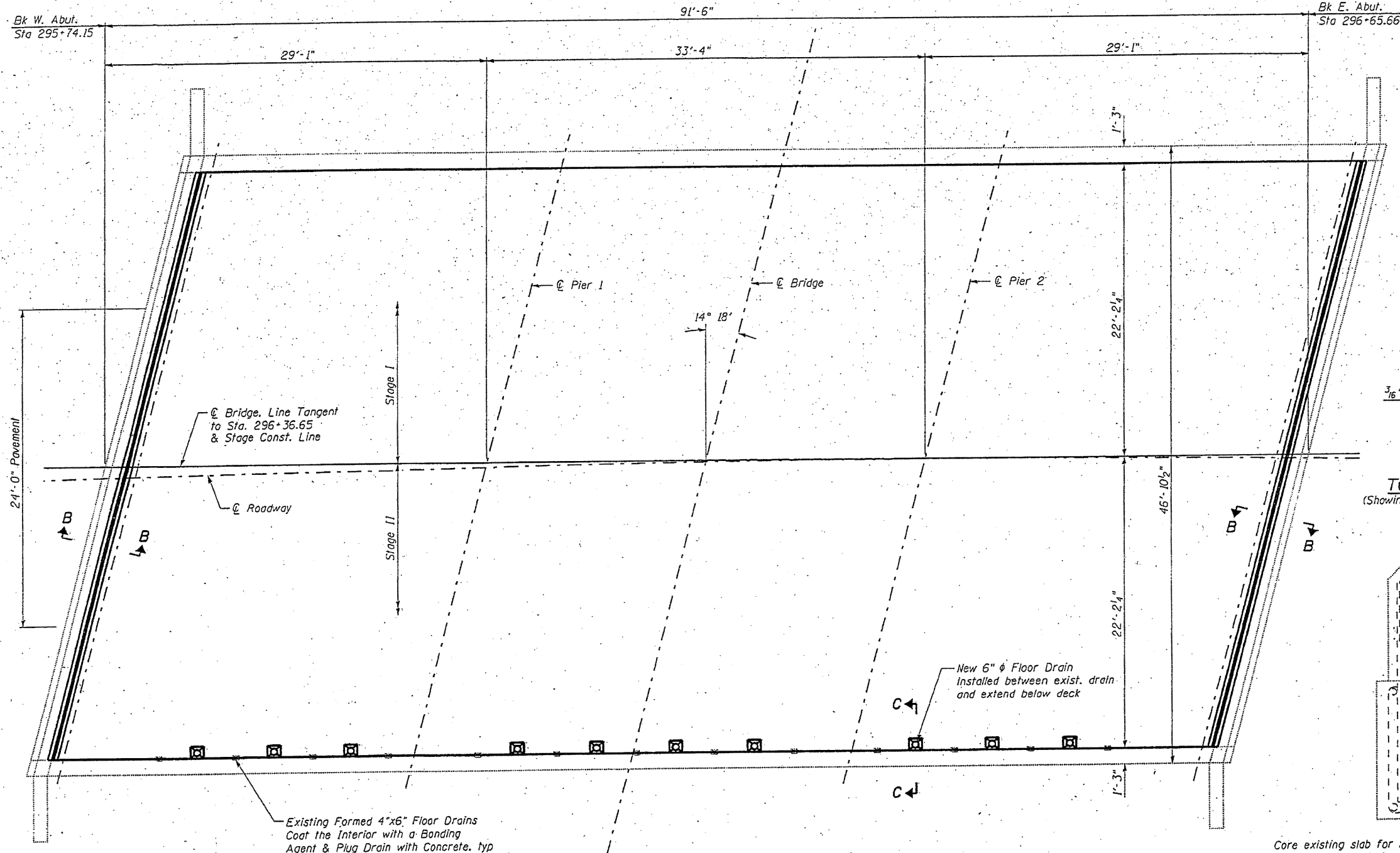


Feb-10-2010 01:52:10PM



Existing Formed 4"x6" Floor Drains
Coat the Interior with a Bonding Agent & Plug Drain with Concrete. typ

New 6" ϕ Floor Drain installed between exist. drain and extend below deck



Notes:
Fiberglass pipe shall conform to ASTM D2996, with short-time rupture strength hoop tensile stress of 30,000 p.s.i. minimum.
The exterior surfaces of the floor drains shall be coated or pigmented by the manufacturer with a color that matches the concrete.

**SUPERSTRUCTURE PLAN
IL 106 OVER THE SNY RIVER
SN 075-0024**

DESIGNED KTH	KLINGNER & ASSOCIATES, P.C. Engineers - Architects - Surveyors 1500 N. 1st Street, Springfield, IL 62761 P: 217-222-2200 F: 217-222-2201 1500 N. 1st Street, Springfield, IL 62761 P: 217-222-2200 F: 217-222-2201 1500 N. 1st Street, Springfield, IL 62761 P: 217-222-2200 F: 217-222-2201 www.klingner.com STATE OF ILLINOIS DESIGN FIRM # 1842738
CHECKED ADL	
DRAWN KTH/BGJ	
CHECKED ADL	

SHEET NO. 3	F.A.P. RTE.	SECTION	COUNTY	TOTAL SHEETS	SHEET NO.
	751	D6 BRIDGE REPAIR 2009	PIKE	22	15
5 SHEETS		CONTRACT NO. 72D44			
FED. ROAD DIST. NO.		ILLINOIS FED. AID PROJECT			

Klingner & Associates, P.C.