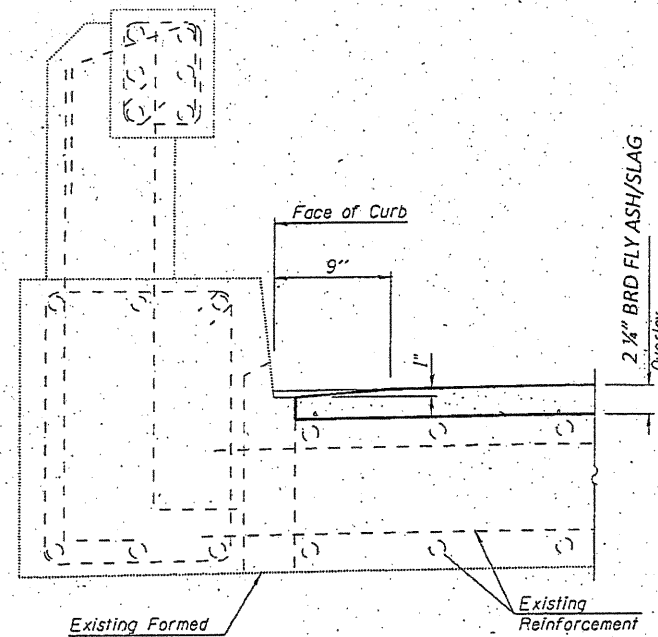
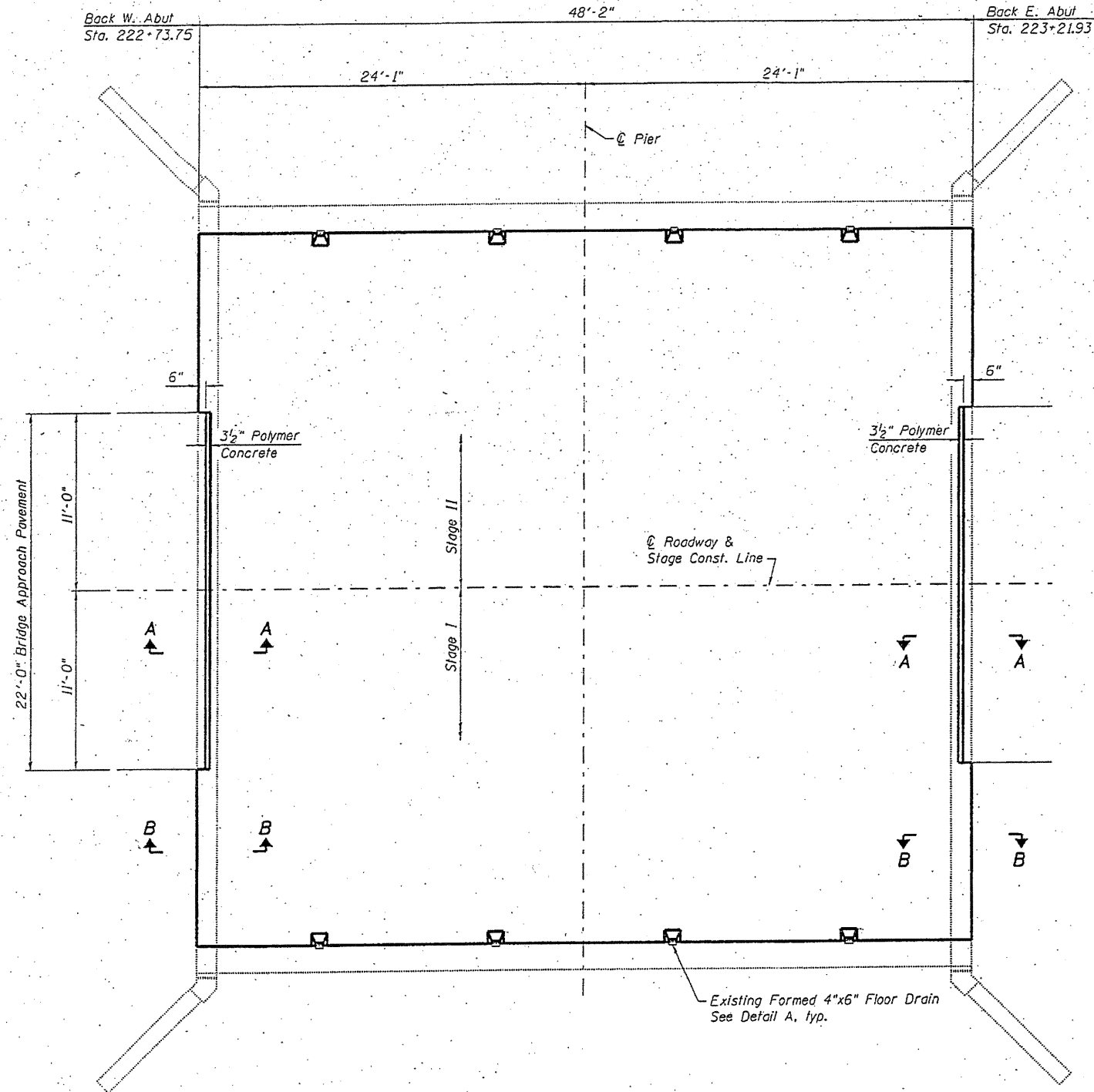
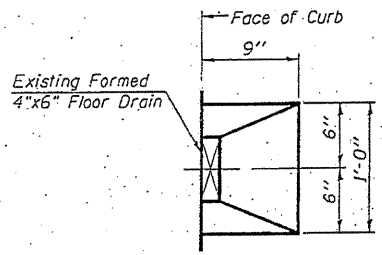


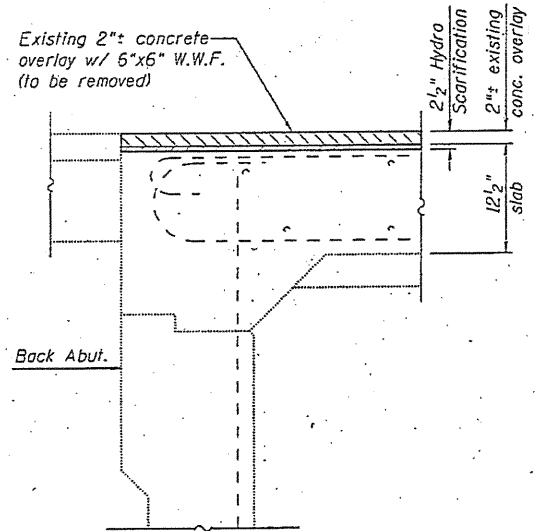
Feb-10-2010 01:52:56PM



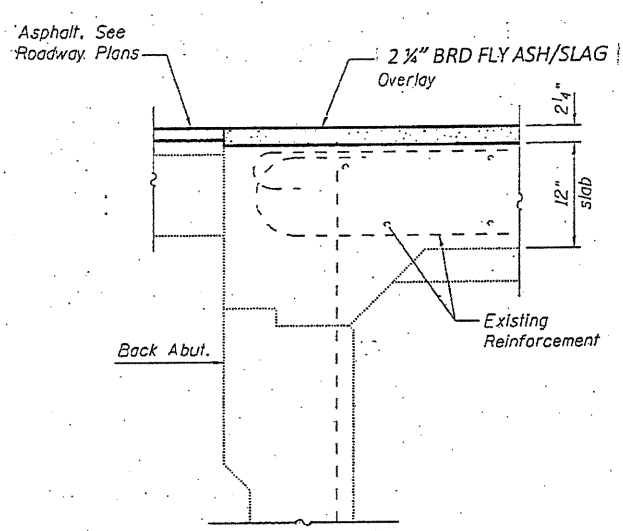
DETAIL A



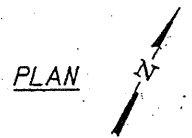
DRAIN TOP PLAN



SECTION B-B  
(Showing Removal)



SECTION B-B  
(Showing Proposed)



**SUPERSTRUCTURE PLAN**  
**IL 106 OVER HADLEY CREEK**  
**SN 075-0004**

DESIGNED	KTH
CHECKED	ADL
DRAWN	KTH/BGJ
CHECKED	ADL

**KLINGNER & ASSOCIATES, P.C.**  
Engineers - Architects - Surveyors  
150 North 2nd Street, Springfield, IL 62760-2626  
150 First Street, Normal, IL 62451-2626  
150 North 2nd Street, Urbana, IL 62901-2626  
150 North 2nd Street, Carleburg, IL 62621-2626  
Internet Address: www.klingner.com  
STATE OF ILLINOIS DESIGN FIRM # 1842738

SHEET NO. 3	F.A.P. RTE.	SECTION	COUNTY	TOTAL SHEETS	SHEET NO.
	751	D6 BRIDGE REPAIR 2009	PIKE	22	20
5 SHEETS			CONTRACT NO. 72D441		
FED. ROAD DIST. NO.		ILLINOIS FED. AID PROJECT			

Klingner & Associates, P.C.