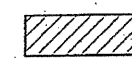
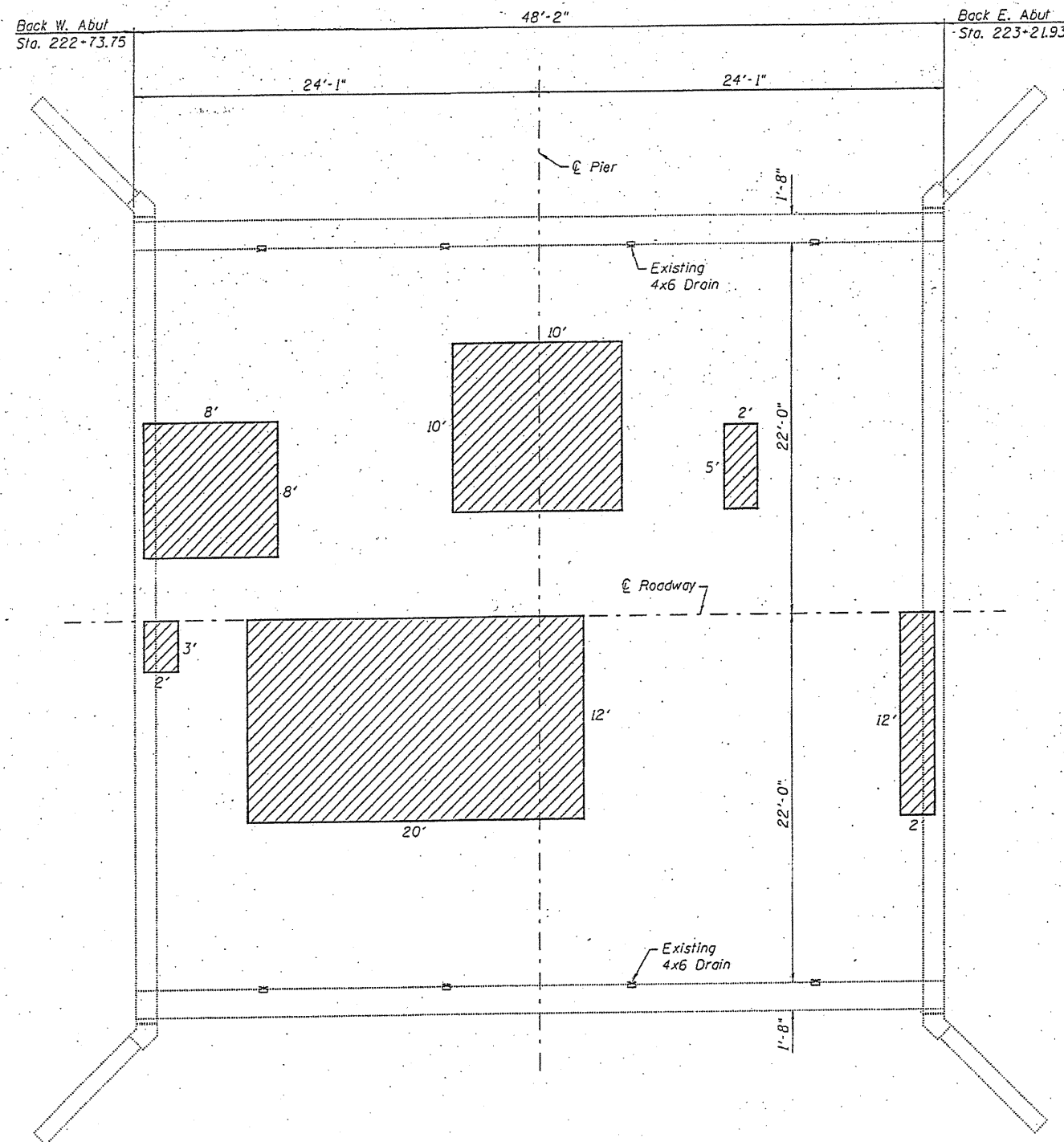


Feb-10-2010 01:53:02PM



Deck Slab Repair (Partial Depth) - 50 SQ. YD.
 Note: Partial Depth Repair shall be achieved by bridge deck hydro-scarification and filled with microsilica concrete overlay. Cost included in "BRIDGE DECK HYDRO-SCARIFICATION 2 1/2" " and "BRIDGE DECK FLY ASH OR GGBF SLAG CONCRETE OVERLAY, 2 1/4"

DECK PATCHING PLAN
IL 106 OVER HADLEY CREEK
SN 075-0004

DESIGNED KTH
CHECKED ADL
DRAWN KTH/BGJ
CHECKED ADL

KLINGNER & ASSOCIATES, P.C.
 Engineers - Architects - Surveyors
1100 North 114 Street, Naperville, IL 60563-2200
 1100 North 114 Street, Naperville, IL 60563-2200
 1100 North 114 Street, Naperville, IL 60563-2200
 1100 North 114 Street, Naperville, IL 60563-2200
 STATE OF ILLINOIS DESIGN FIRM # 1642738

PLAN



SHEET NO. 5	F.A.P. RTE.	SECTION	COUNTY	TOTAL SHEETS	SHEET NO.
	751	D6. BRIDGE REPAIR 2009	PIKE	22	22
5 SHEETS			CONTRACT NO. 72D44		
FED. ROAD DIST. NO.		ILLINOIS FED. AID PROJECT			

Klingner & Associates, P.C.

FILE\$