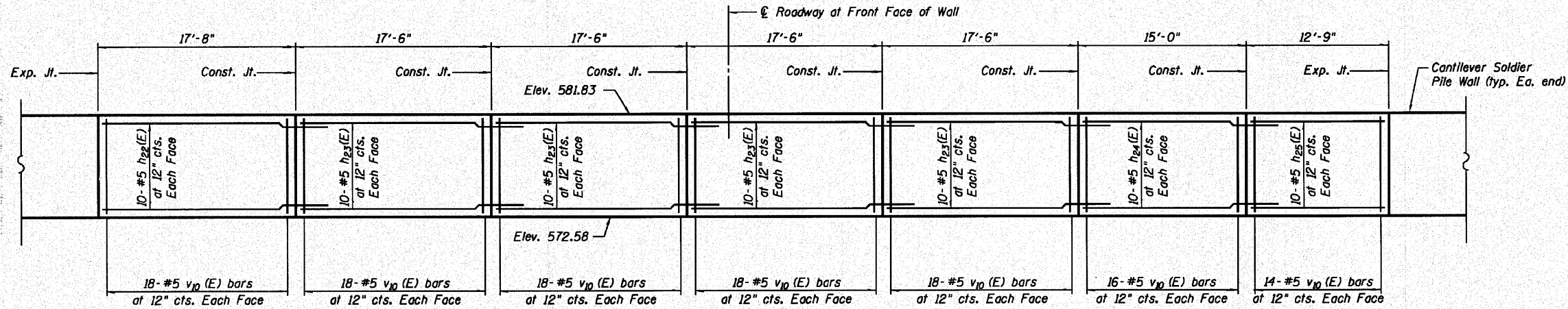


STATE OF ILLINOIS
DEPARTMENT OF TRANSPORTATION



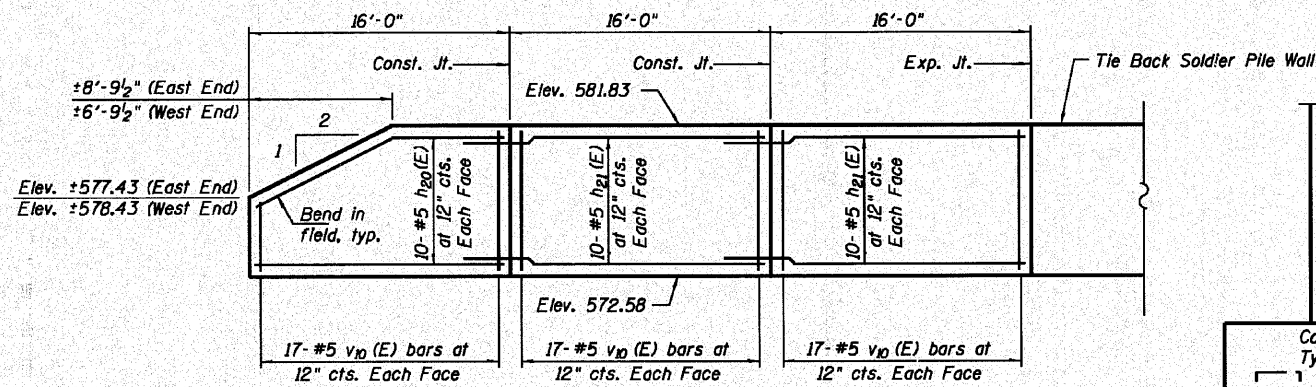
CONCRETE FASCIA ELEVATION AT TIE-BACK SOLDIER PILE WALL

Note:
Cut v_{10} (E) bars in field
at ends of wall.

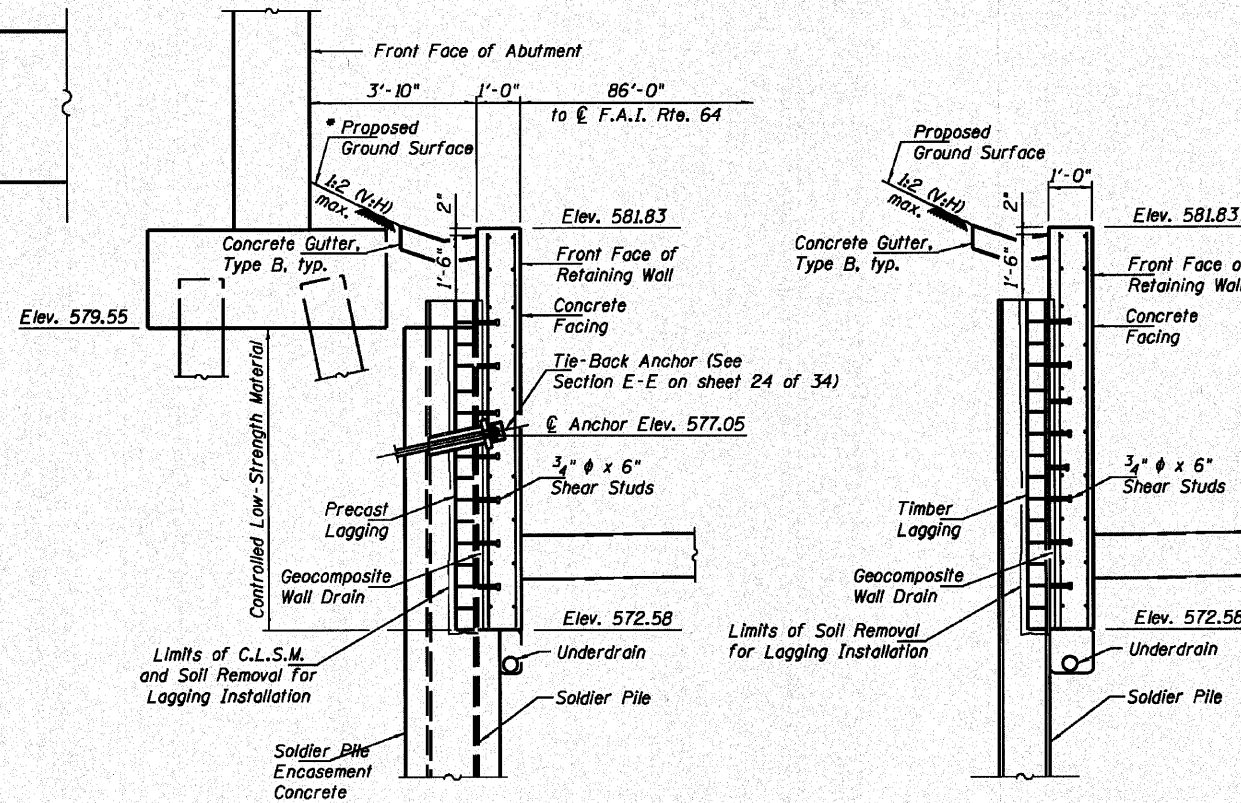
* Proposed ground surface to be finished with coarse
aggregate. Cost included with "Concrete Gutter, Type B".

BILL OF MATERIAL

| Bar | No. | Size | Length | Shape |
|---|-----|------|---------|-------|
| h_{20} (E) | 40 | #5 | 15'-8" | — |
| h_{21} (E) | 80 | #5 | 19'-3" | — |
| h_{22} (E) | 20 | #5 | 20'-11" | — |
| h_{23} (E) | 80 | #5 | 20'-9" | — |
| h_{24} (E) | 20 | #5 | 18'-3" | — |
| h_{25} (E) | 20 | #5 | 12'-5" | — |
| v_{10} (E) | 444 | #5 | 8'-11" | — |
| Concrete Structures | | | Cu. Yd. | 71.3 |
| Precast Concrete Lagging | | | Sq. Ft. | 765 |
| Stud Shear Connectors | | | Each | 670 |
| Untreated Timber Lagging | | | Sq. Ft. | 652 |
| Reinforcement Bars, Epoxy Coated | | | Pound | 9,200 |
| Furnishing Soldier Piles (HP Section) | | | Foot | 1,117 |
| Geocomposite Wall Drain | | | Sq. Yd. | 142 |
| Pipe Underdrains for Structures 4" | | | Foot | 212 |
| Concrete Gutter, Type B | | | Foot | 212 |
| Permanent Ground Anchor | | | Each | 22 |
| Drilling and Setting Soldier Piles (In Soil) | | | Cu. Ft. | 1,768 |
| Driving Soldier Piles | | | Foot | 553 |
| Concrete Sealer | | | Sq. Ft. | 1,635 |



CONCRETE FASCIA ELEVATION AT CANTILEVER SOLDIER PILE WALL
(East End Shown, West End Mirror Image)



SECTION A-A

SECTION B-B

SOUTH RETAINING WALL DETAILS
STRUCTURE NO. 082-0176

| |
|------------------------|
| DESIGNED - T.J.Z |
| CHECKED - C.W.C |
| DRAWN - D.L.H |
| CHECKED - C.W.C, S.D.S |

WHKS & CO.
ENGINEERING

7018 KINGSMILL CT.,
SPRINGFIELD, IL
(217) 483-9457
DESIGN FIRM #184001036

| | | | | | |
|---------------------------|--------------|---------|-----------|-----------------|--------------|
| SHEET NO. 21 34 SHEETS | F.A. RTE. | SECTION | COUNTY | TOTAL SHEETS | SHEET NO. |
| | 64 | 82-5K-2 | ST. CLAIR | 162 | 104 |
| CONTRACT NO. 76D59 | | | | | |
| ILLINOIS FED. AID PROJECT | | | | | |