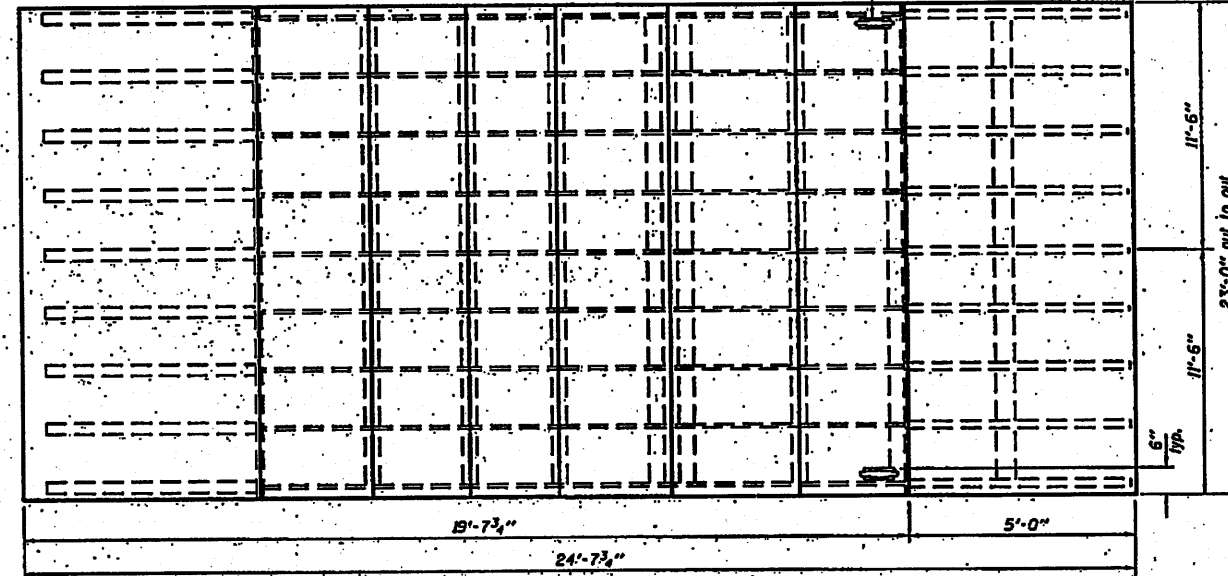
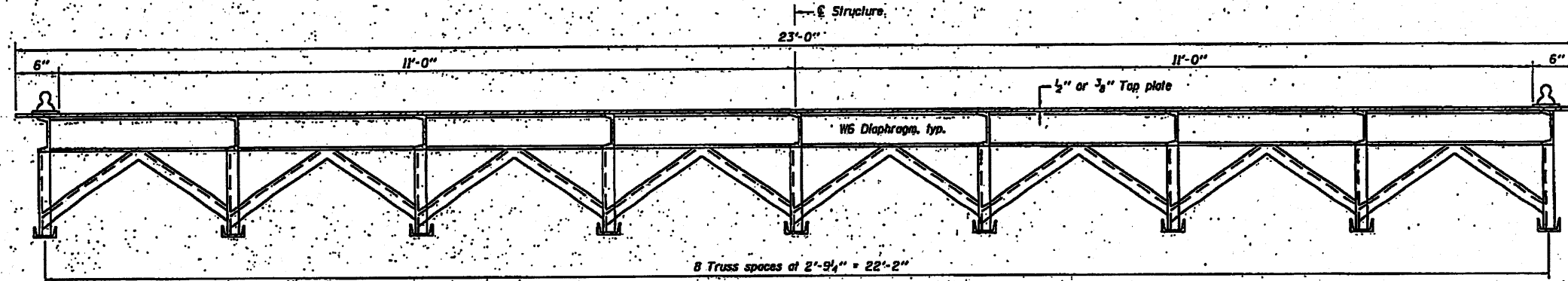


ELEVATION

18" Steel cast keel, typ. ea. side
(Subject to the approval of the Engineer).
Cost included in the cost of Steel Dock.



PLAN



CROSS SECTION

GENERAL NOTES

Calculated weight of Structural Steel for each steel dock = 11,650 lbs. (A 270, Grade 50).
Calculated weight of Structural Steel for each steel dock = 10,670 lbs. (A 270, Grade 36).
Field welding of construction accessories will not be permitted to the structure.
The Contractor shall review the geometry of component members based on anticipated cutting and assembly methods. Minor deviations from contract details shall be noted on the shop drawings submitted for the Engineer's approval, but will not justify additional compensation. Significant proposed changes (member sizes, joint configuration, etc.) must be accepted by the Engineer before shop drawing submission.
All structural steel deck plates 1 thru 18 shall be AASHTO M 270, Grade 50. All other structural steels shall be AASHTO M 270, Grade 36.
The organic zinc epoxy/urethane paint system shall be used, with oil coats shop applied, unless otherwise noted. The color of the final finish coat shall be Yellow, Munsell No. 5Y 8/4. See Special Provisions for "Cleaning and Painting New Metal Structures".

TOTAL BILL OF MATERIAL

Item	Unit	Total
Steel Docks	Each	2

**STEEL DOCK
(BRUSSELS FERRY)
F.A.P. RTE. 304 (IL 100)
SECTION 21-4
JERSEY COUNTY**

EXPIRES 11-30-2012

DESIGNED -
CHECKED -
DRAWN - H.T. BLOND
CHECKED -

EXAMINED -
PASSED -

DATE - NOV 22 2010

STATE OF ILLINOIS
DEPARTMENT OF TRANSPORTATION

STEEL DOCK
(BRUSSELS FERRY)
SHEET NO. 1 OF 11 SHEETS

F.A.P. RTE.	SECTION	COUNTY	TOTAL SHEETS	SHEET NO.
304	21-4	JERSEY	14	4

CONTRACT NO. 76658
ILLINOIS FED. AID PROJECT