

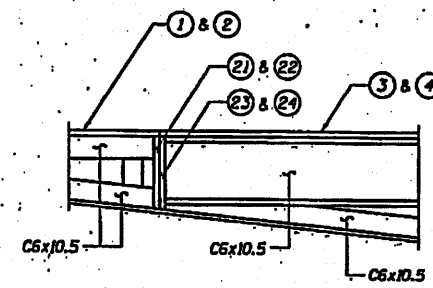
PLAN

(Shows the outside edge of the top plates)
 Dimensions shown do not include the 3/8" gap between plates 3 thru 10 and 11 thru 14.
 There is no gap between plates 1 & 3 and 2 & 4.

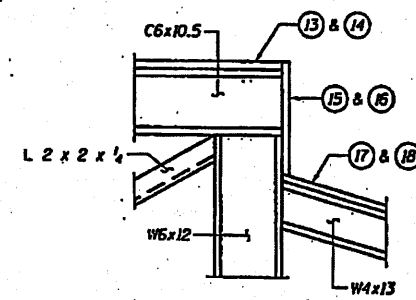
Notes: Diamond plating shall be used for all areas subjected to vehicular traffic.
 See sheet 3 of 11 for plate dimensions.
 See sheet 8 of 11 for the location of Details A, B, & C.
 See sheet 10 of 11 for Section A-D.

**PLATE ASSEMBLY
 BILL OF MATERIALS
 FOR ONE LOADING DOCK**

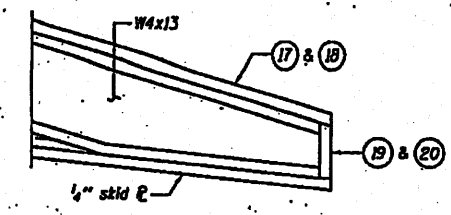
Plate No.	Description	Estimated weight (lb.)
1	Plate - Top 3/8" steel P	942
2		942
3		408
4		408
5		390
6		390
7		390
8		390
9		436
10		436
11	Plate - Top 3/8" steel P	731
12		731
13		495
14		495
15	Plate - Bump 3/4" steel P	303
16		303
17	Plate - Apron rub 3/4" steel P	1880
18		1880
19	Plate - Front 3/4" steel P	71
20		71
21	Plate - Front 3/8" steel P	117
22		117
23	Plate - Rear 3/8" steel P	120
24		120
25	Plate - Skid 1/2" steel P	23
26		47
27		52
Total weight of plate assembly		13,670



DETAIL A



DETAIL B



DETAIL C

DESIGNED - RAY MANCHI	EXAMINED - <i>Thomas J. ...</i>	DATE -
CHECKED - CLYD M. EVOY	PASSED - <i>Robert ...</i>	
DRAWN - H.T. DUONG		
CHECKED - G.R.A. / C.M.E.		

**STATE OF ILLINOIS
 DEPARTMENT OF TRANSPORTATION**

**PLATE ASSEMBLY
 (BRUSSELS FERRY)**

F.A.P. NTE. 304	SECTION 21-4	COUNTY JERSEY	TOTAL SHEETS 11	SHEET NO. 2
SHEET NO. 2 OF 11 SHEETS			CONTRACT NO. 76555	