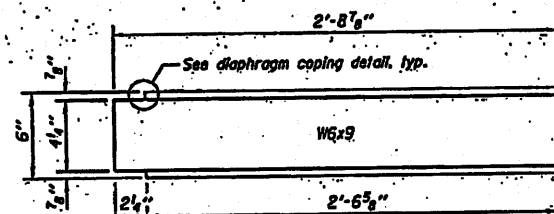
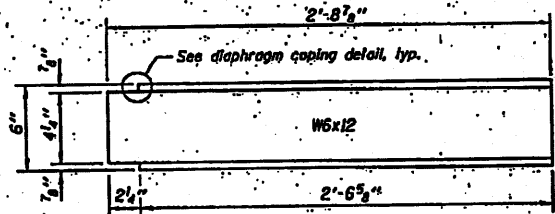


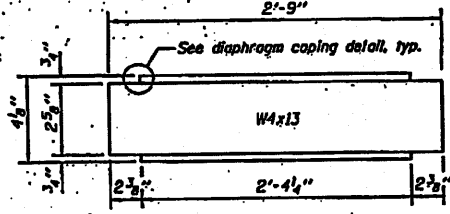
**FRAMING PLAN**  
(Showing top of framing plan)



**DIAPHRAGM D**  
(40 required)



**DIAPHRAGM D1**  
(16 required)



**DIAPHRAGM D2**  
(8 required)

Notes: See sheets 6 & 7 of 11 for Sections A-A thru I-I.  
See sheet 10 of 11 for Section D-D and Section P-P.  
See sheet 11 of 11 for diaphragm coping detail.

DESIGNED - RAY ANACHE	EXAMINED - <i>Thomas J. D'Amico</i>	DATE -
CHECKED - CURT M. ENBY	PASSED - <i>Robert E. Anderson</i>	
DRAWN - R.T. BUSH	ENGINEER OF BRIDGES AND STRUCTURES	
CHECKED - G.L.A. / C.A.E.		

STATE OF ILLINOIS  
DEPARTMENT OF TRANSPORTATION

STRUCTURAL STEEL  
(BRUSSELS FERRY)  
SHEET NO. 4 OF 11 SHEETS

F.A.P. RATE	SECTION	COUNTY	TOTAL SHEETS	SHEET NO.
304	21-4	JERSEY	11	4
			CONTRACT NO. 76E55	
ILLINOIS FED. AID PROJECT				