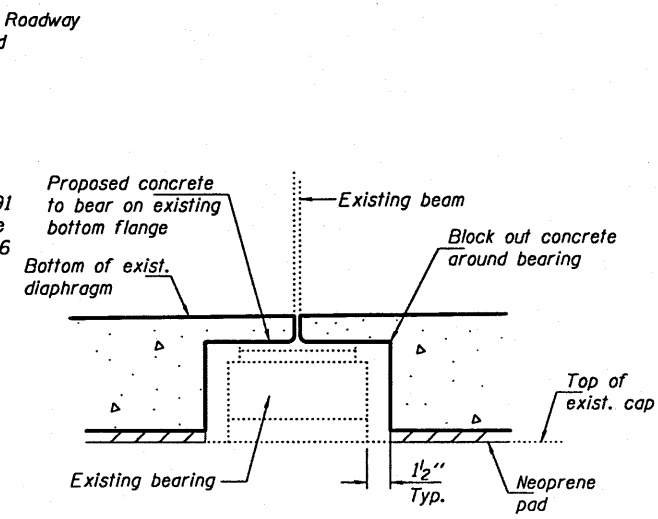
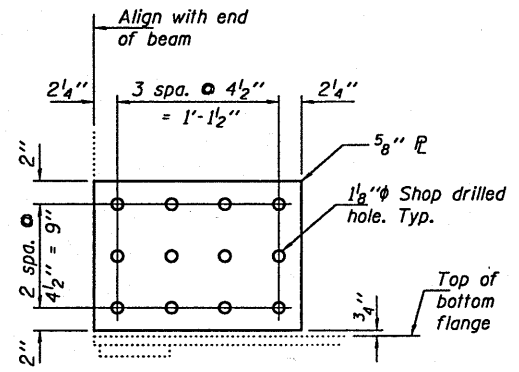


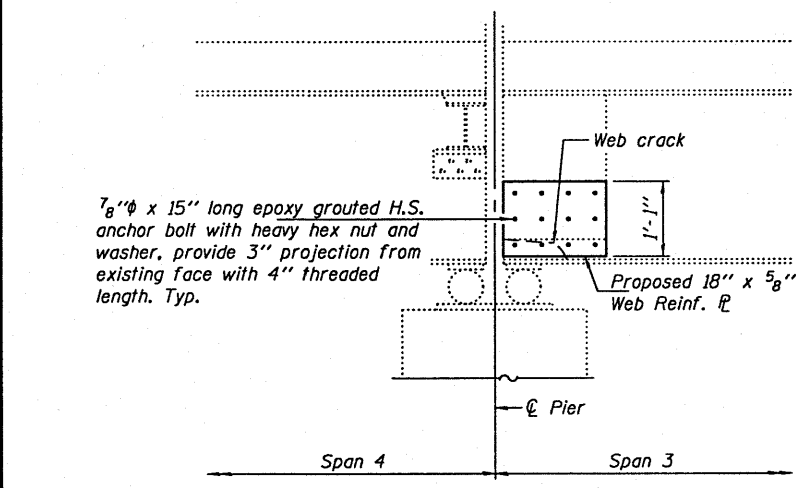
**HALF SECTION  
CONCRETE DIAPHRAGM REPAIR AT PIER 3**  
At Span 3 End  
(Looking East)



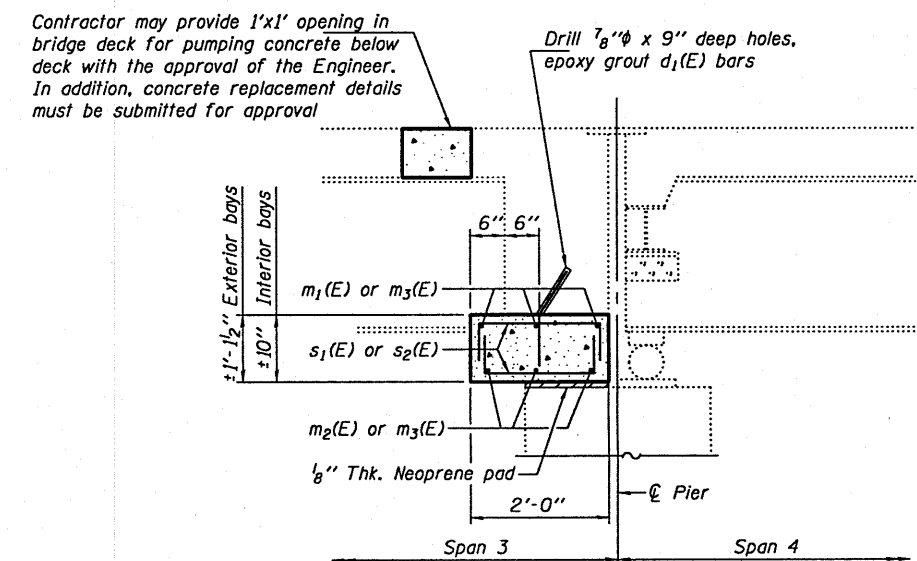
**DETAIL A**



**WEB REINFORCING PLATE  
BOLT HOLE LOCATIONS**

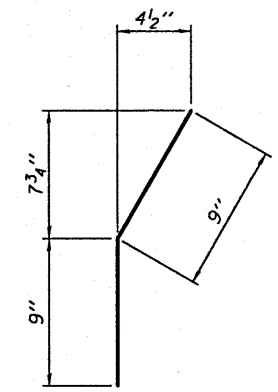


**REPAIR AT PIER 3  
ALONG BEAM LINE NO. 1**  
Looking South, Exterior Face

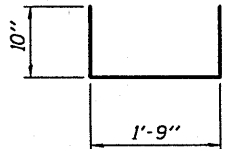


**SECTION THRU CONCRETE DIAPHRAGM  
AT PIER 3**  
Looking North

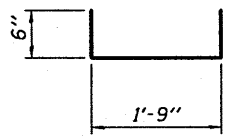
Note:  
Minimum clearance to reinforcing steel is 1 1/2\"/>



**BAR d1(E)**



**BAR s1(E)**



**BAR s2(E)**

**BILL OF MATERIAL**

Bar	No.	Size	Length	Shape	
d <sub>1</sub> (E)	26	#5	1'-6"		
m <sub>1</sub> (E)	6	#5	3'-3"	—	
m <sub>2</sub> (E)	6	#5	1'-9"	—	
m <sub>3</sub> (E)	24	#5	4'-6"	—	
s <sub>1</sub> (E)	12	#5	3'-5"		
s <sub>2</sub> (E)	40	#5	2'-9"		
Reinforcement Bars, Epoxy Coated				Pound	350
Concrete Superstructure				Cu. Yds.	1.7

Notes:  
Neoprene pad and removal of bearing retainer angles shall be included with Concrete Superstructure.  
Epoxy grouting for anchor bolts shall be included with Structural Steel Repair.  
Epoxy grouting for reinforcement bars shall be included with Reinforcement Bars, Epoxy Coated.  
See Section 584 of the Standard Specifications for Epoxy Grouting of Anchor Rods and Bars.

**IL 161 OVER CROOKED CREEK**

DESIGNED GGE	EXAMINED <i>Carl Perry</i>	DATE NOVEMBER 22, 2010	STATE OF ILLINOIS DEPARTMENT OF TRANSPORTATION	REPAIR DETAILS SN 014-0025	F.A. RTE.	SECTION	COUNTY	TOTAL SHEETS	SHEET NO.	
CHECKED VHV	PASSED <i>Ralph E. Anderson</i>				805	7BR-2	CLINTON	8	5	
DRAWN baliva					CONTRACT NO. 76E66					
CHECKED GGE VHV					ILLINOIS FED. AID PROJECT					