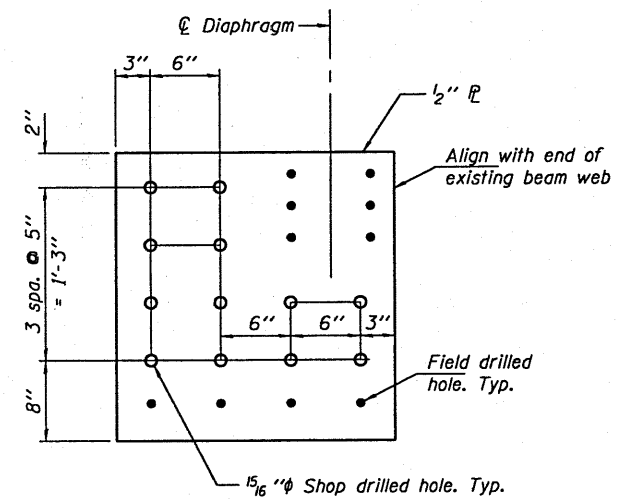


**HALF SECTION
BEAM END REPAIRS AT PIER 7**
Looking East, Ahead Station

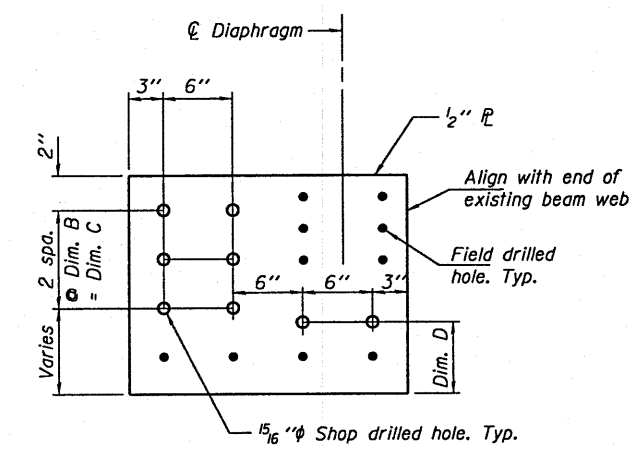
SECTION AT PIER 7
Looking North, Beam Line No. 1, 2, 3, 5 and 6 shown
Beam Line No. 7 similar

Beam No.	Dim. A
1 & 6	1'-9"
2 & 3	1'-6"
5	1'-7 1/2"
7	2'-1"



**WEB REINFORCING PLATE
BOLT HOLE LOCATIONS**

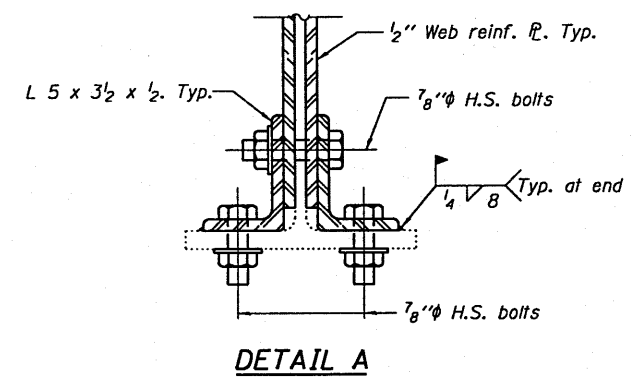
Beam Line No. 7
Left R shown, Right R opposite hand
2 Left required, 2 Right required



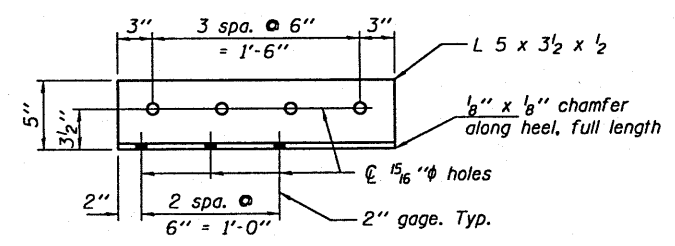
**WEB REINFORCING PLATE
BOLT HOLE LOCATIONS**

Beam Line No. 1, 2, 3, 5 & 6
Left plate shown, Right plate opposite hand

Beam No.	Dim. B	Dim. C	Dim. D	Required No.	
				Left R	Right R
1 & 6	5 1/2"	11"	8"	4	4
2 & 3	5"	10"	5 1/2"	3	3
5	5"	10"	6 1/4"	2	2

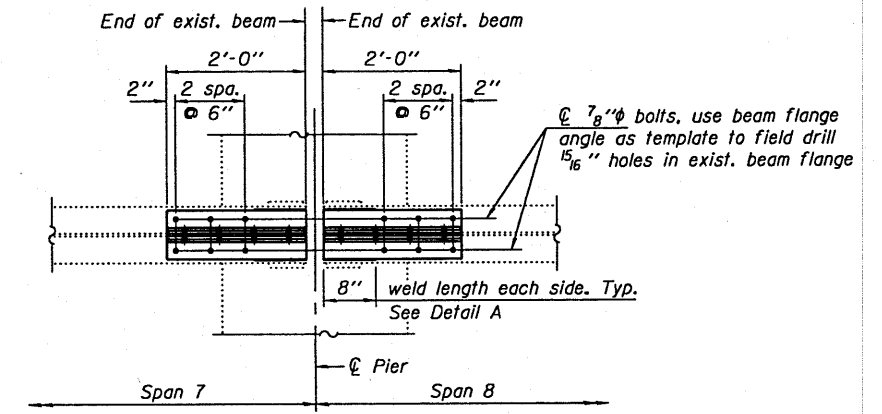


DETAIL A



**BEAM FLANGE ANGLE
BOLT HOLE LOCATIONS**

Left angle shown, Right angle opposite hand
12 - required each, 24 total



SECTION B-B

Notes:
See sheet 6 of 6 for details of Steel Diaphragm Replacement at Pier 7.

IL 161 OVER CROOKED CREEK

DESIGNED GGE	EXAMINED <i>Carl Perry</i>	DATE NOVEMBER 22, 2010	STATE OF ILLINOIS DEPARTMENT OF TRANSPORTATION	REPAIR DETAILS SN 014-0025	F.A. RTE. 805	SECTION 7BR-2	COUNTY CLINTON	TOTAL SHEETS 8	SHEET NO. 6	
CHECKED VHV	PASSED <i>Ralph E. Anderson</i>				CONTRACT NO. 76E66			ILLINOIS FED. AID PROJECT		
DRAWN baliva					SHEET NO. 4 OF 6 SHEETS					
CHECKED GGE VHV										