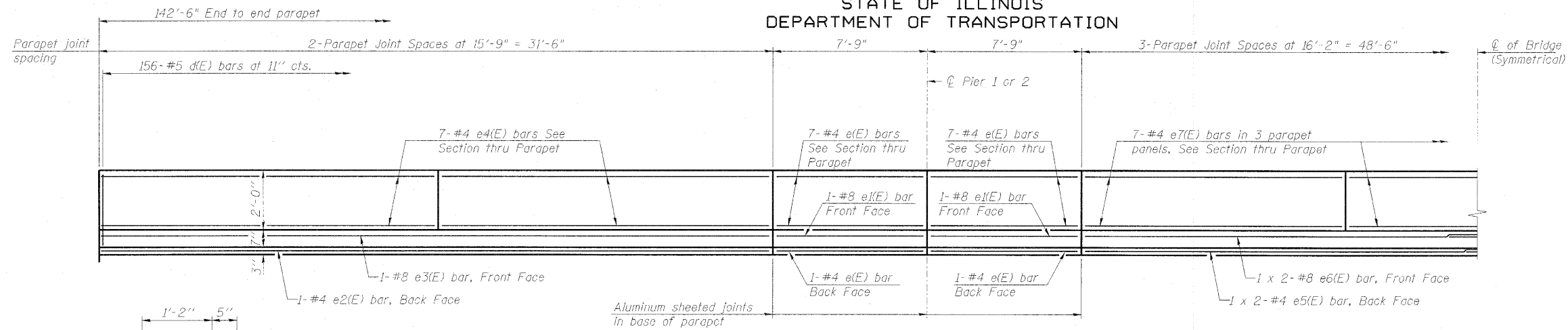
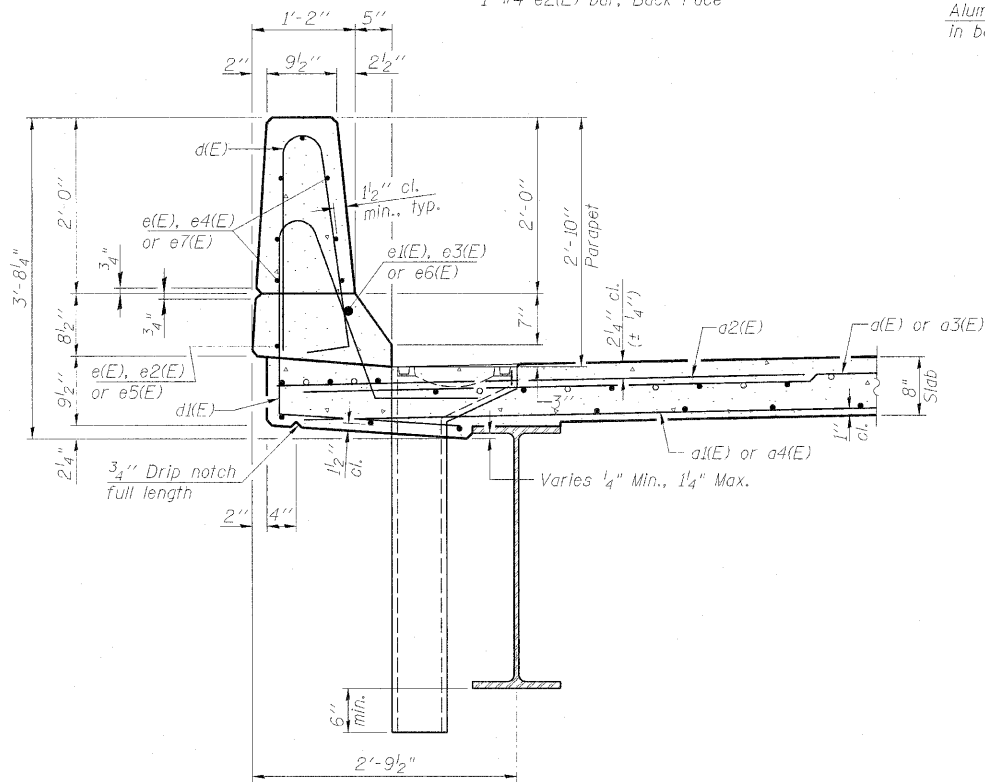


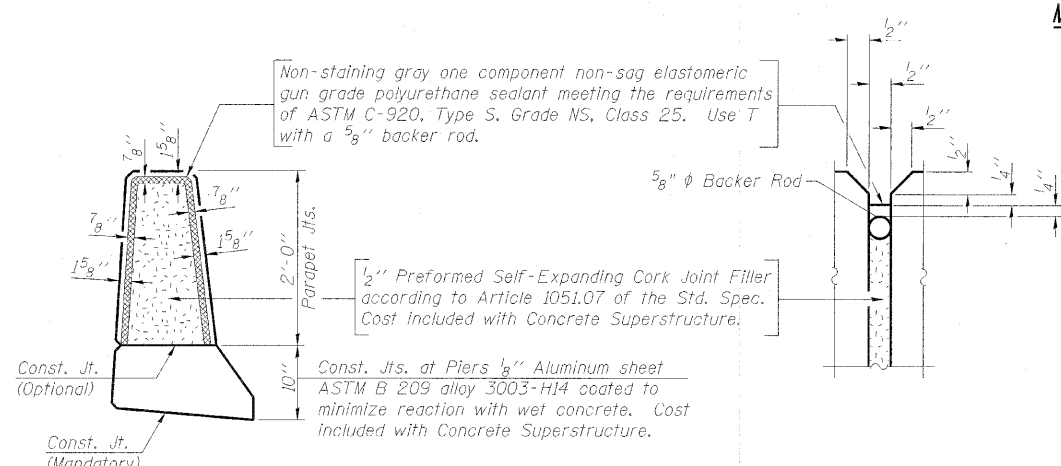
STATE OF ILLINOIS
DEPARTMENT OF TRANSPORTATION



INSIDE ELEVATION OF PARAPET

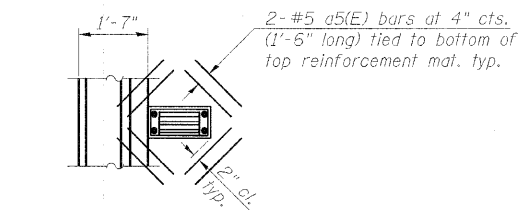


SECTION THRU PARAPET

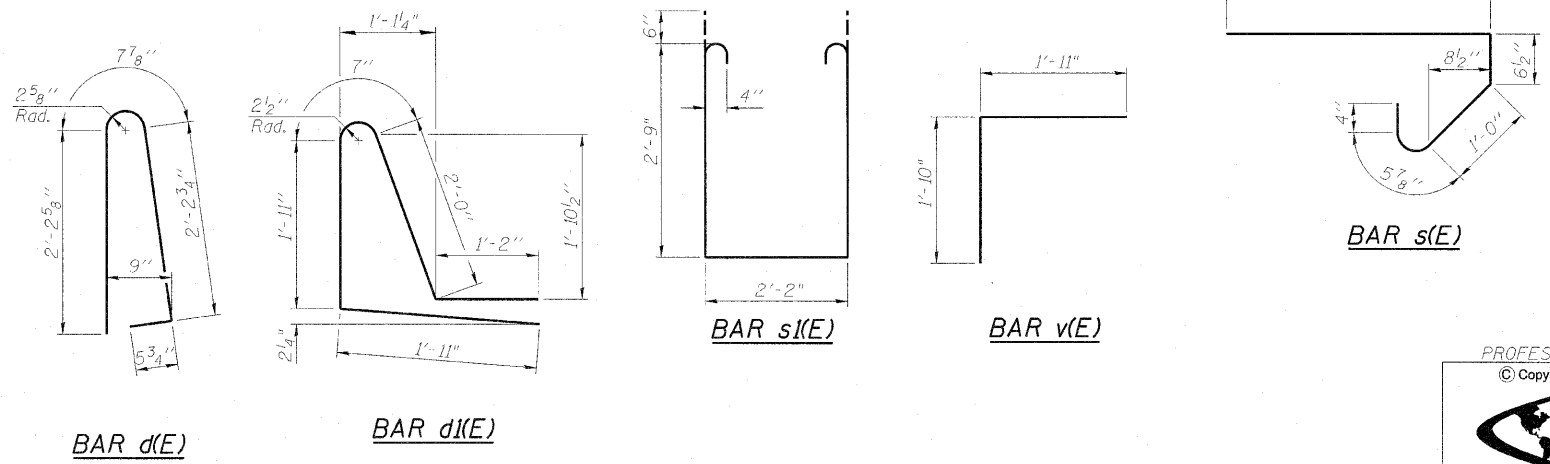


PARAPET JOINT DETAILS

MINIMUM BAR LAP
#4 bar = 2'-0"
#5 bar = 3'-3"
#8 bar = 5'-2"



PLAN - REINFORCEMENT TREATMENT AT SCUPPERS



**SUPERSTRUCTURE
BILL OF MATERIAL**

Bar	No.	Size	Length	Shape
d(E)	245	#5	15'-8"	—
d1(E)	172	#5	15'-0"	—
a2(E)	488	#6	6'-6"	—
a3(E)	245	#5	18'-6"	—
a4(E)	172	#5	17'-10"	—
a5(E)	16	#5	1'-6"	—
b(E)	319	#5	31'-1"	—
b1(E)	70	#6	33'-6"	—
b2(E)	62	#5	17'-1"	—
d(E)	312	#5	5'-7"	⌒
d1(E)	312	#5	7'-7"	⌒
e(E)	64	#4	7'-5"	—
e1(E)	8	#8	7'-5"	—
e2(E)	4	#4	31'-2"	—
e3(E)	4	#8	31'-2"	—
e4(E)	56	#4	15'-5"	—
e5(E)	4	#4	25'-1"	—
e6(E)	4	#8	26'-8"	—
e7(E)	42	#4	15'-10"	—
m(E)	10	#6	15'-10"	—
m1(E)	24	#6	9'-3"	—
m2(E)	8	#6	5'-7"	—
m3(E)	4	#6	2'-5"	—
m4(E)	2	#6	1'-3"	—
m5(E)	10	#6	18'-8"	—
m6(E)	2	#6	4'-1"	—
s(E)	72	#5	5'-4"	⌒
s1(E)	72	#4	8'-8"	⌒
v(E)	74	#5	3'-9"	⌒
Reinforcement Bars, Epoxy Coated		Pound	42980	
Concrete Superstructure		Cu. Yds.	185.5	

Bars indicated thus 1 x 3 -#5 etc. indicates 1 line of bars with 3 lengths per line.

**SUPERSTRUCTURE DETAILS
STRUCTURE NO. 076-0029**

PROFESSIONAL DESIGN FIRM LICENSE #184-001084
© Copyright Hanson Professional Services Inc. 2010

HANSON
Hanson Professional Services Inc.

JOB NO. 08H0131
DATE 05/21/10

SHEET NO. 13
29 SHEETS

F.A.P. RTE. 885	SECTION 6B-2	COUNTY Pope	TOTAL SHEETS 48	SHEET NO. 32
CONTRACT NO. 78141			ILLINOIS FED. AID PROJECT	