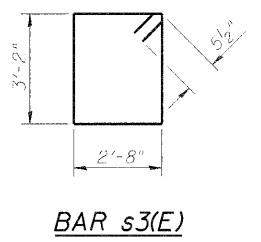
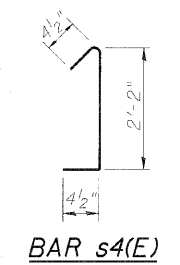
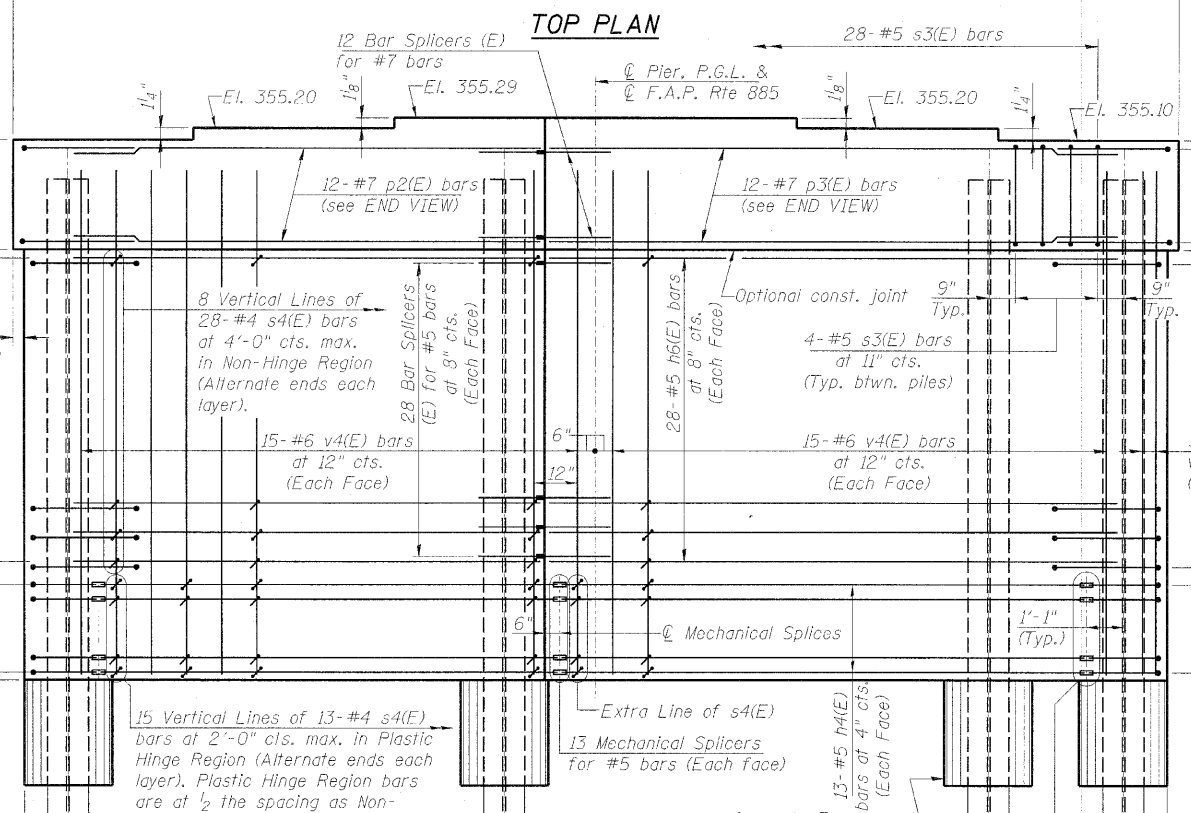
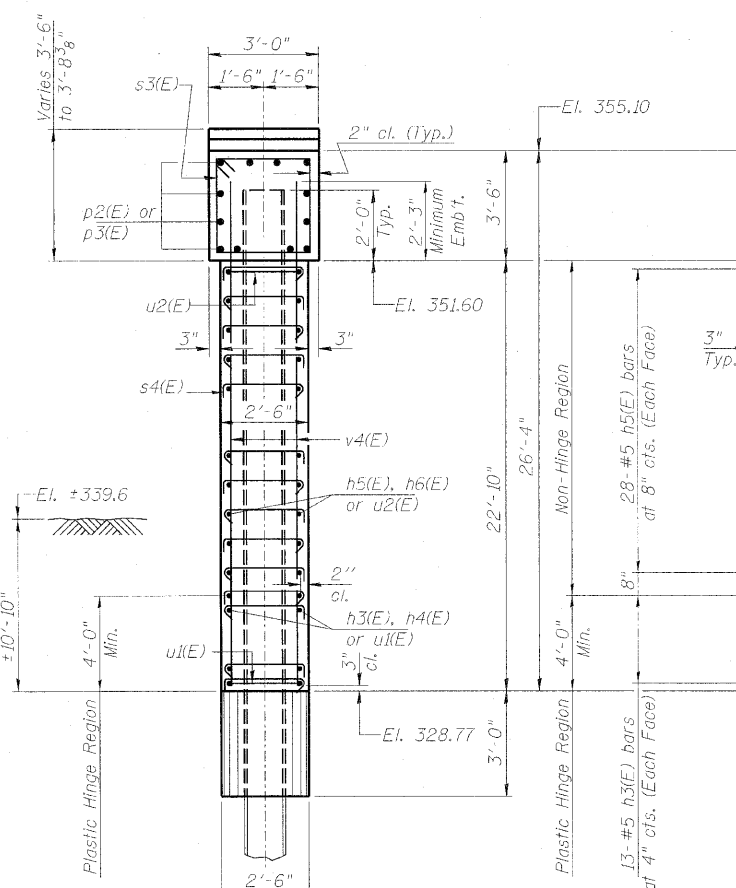
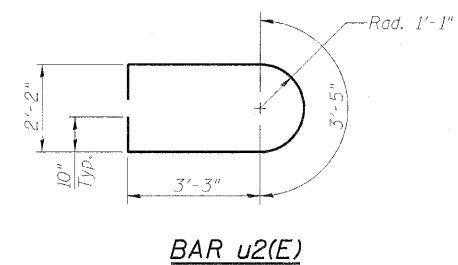
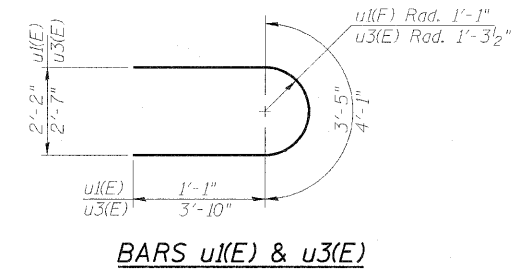
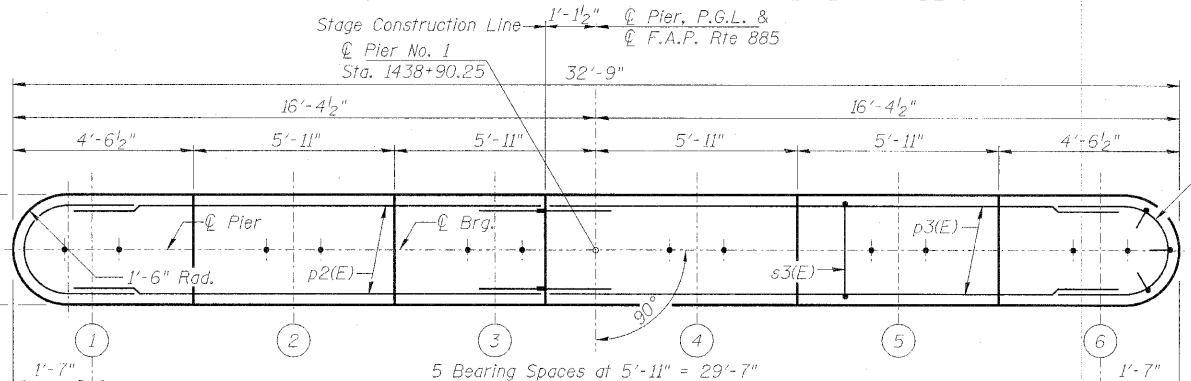
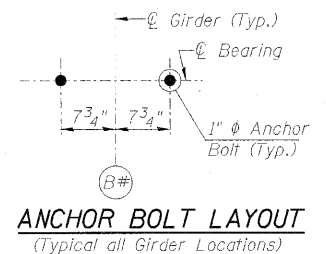


STATE OF ILLINOIS
DEPARTMENT OF TRANSPORTATION

Notes:
Space reinforcement in cap to miss anchor bolts.
Pour steps monolithically with cap.
For details of piles and concrete encasement,
See Sheet 25 of 29.
For Stage Construction Details, See Sheets 4 & 5 of 29.

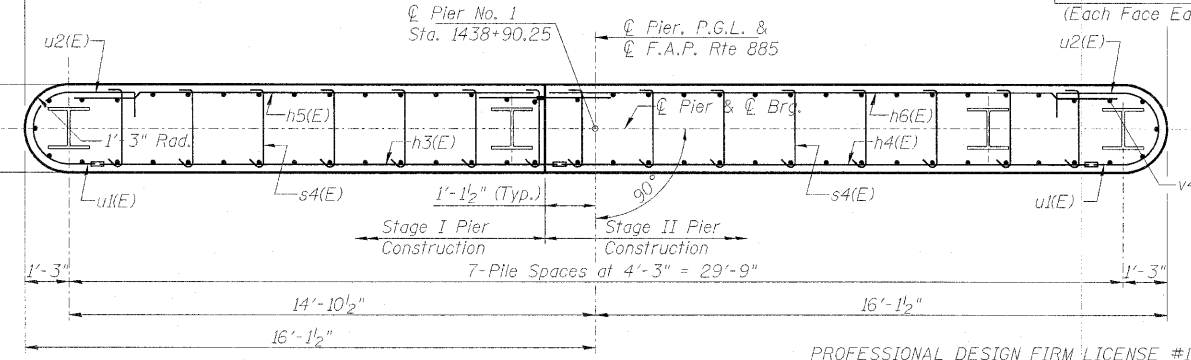


BILL OF MATERIAL (Pier 1)

Bar	No.	Size	Length	Shape
h3(E)	26	#5	13'-2"	—
h4(F)	26	#5	14'-5"	—
h5(E)	56	#5	13'-7"	—
h6(E)	56	#5	15'-10"	—
p2(E)	12	#7	13'-7"	—
p3(E)	12	#7	15'-10"	—
s3(E)	28	#5	12'-7"	□
s4(E)	419	#4	2'-11"	┌
u1(E)	26	#5	5'-7"	U
u2(E)	56	#5	11'-7"	U
u3(E)	8	#6	11'-9"	U
v4(E)	66	#6	24'-11"	—
Structure Excavation			Cu. Yd.	91
Concrete Structures			Cu. Yd.	79.9
Reinforcement Bars, Epoxy Coated			Pound	7810
Furnishing Steel Piles, HP 14x89			Foot	344
Driving Piles			Foot	344
Concrete Encasement			Cu. Yd.	4.4

PILE DATA

Type: HP 14x89
Nominal Required Bearing: 705 kips
Factored Resistance Available: 347 kips
Factored Resistance Available During an Extreme Event 1: 705 kips
Est. Length: 43 Ft.
No. Production Piles: 8
No. Test Piles:



**PIER 1
STRUCTURE NO. 076-0029**

PROFESSIONAL DESIGN FIRM LICENSE #184-001084
© Copyright Hanson Professional Services Inc. 2010

HANSON
Hanson Professional Services Inc.

JOB NO. 08H0131
DATE 05/21/10

SHEET NO. 23
29 SHEETS

F.A.P. RTE. 885
SECTION 6B-2
COUNTY Pope
TOTAL SHEETS 48
SHEET NO. 42
CONTRACT NO. 78141
ILLINOIS FED. AID PROJECT