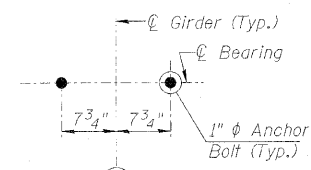
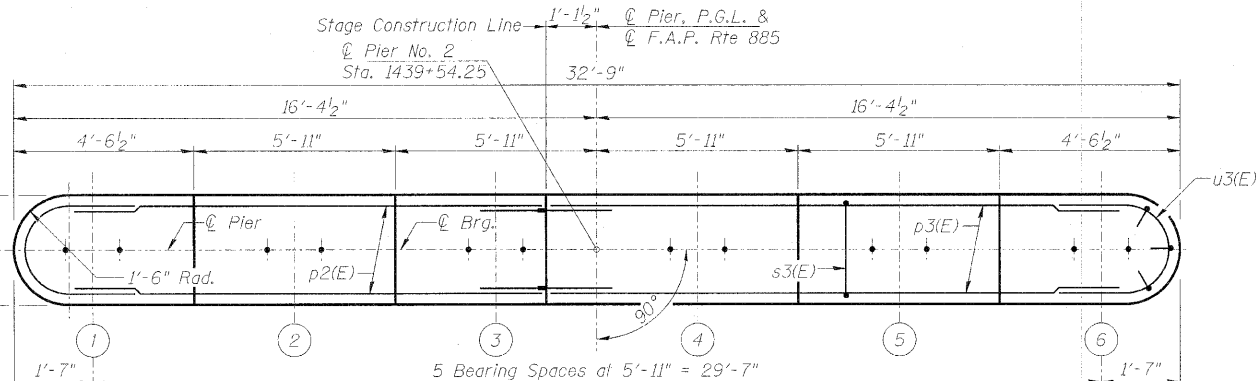


STATE OF ILLINOIS
DEPARTMENT OF TRANSPORTATION

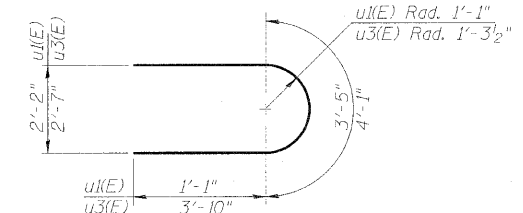
Notes:
Space reinforcement in cap to miss anchor bolts.
Pour steps monolithically with cap.
For details of piles and concrete encasement,
See Sheet 25 of 30.
For Stage Construction Details, See Sheets 4 & 5 of 30.



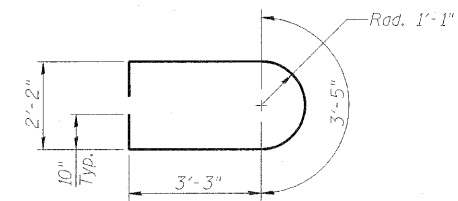
ANCHOR BOLT LAYOUT
(Typical all Girder Locations)



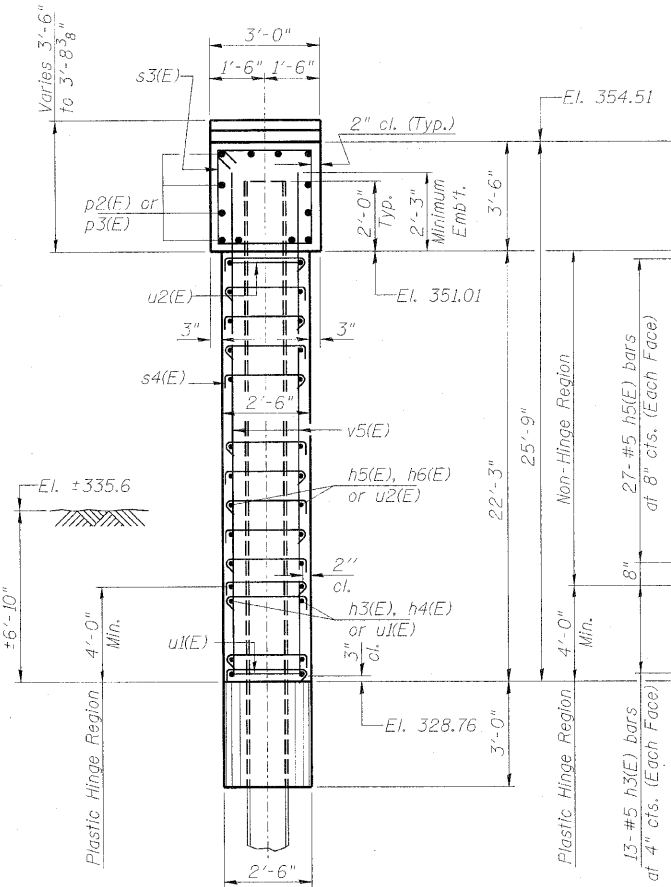
TOP PLAN



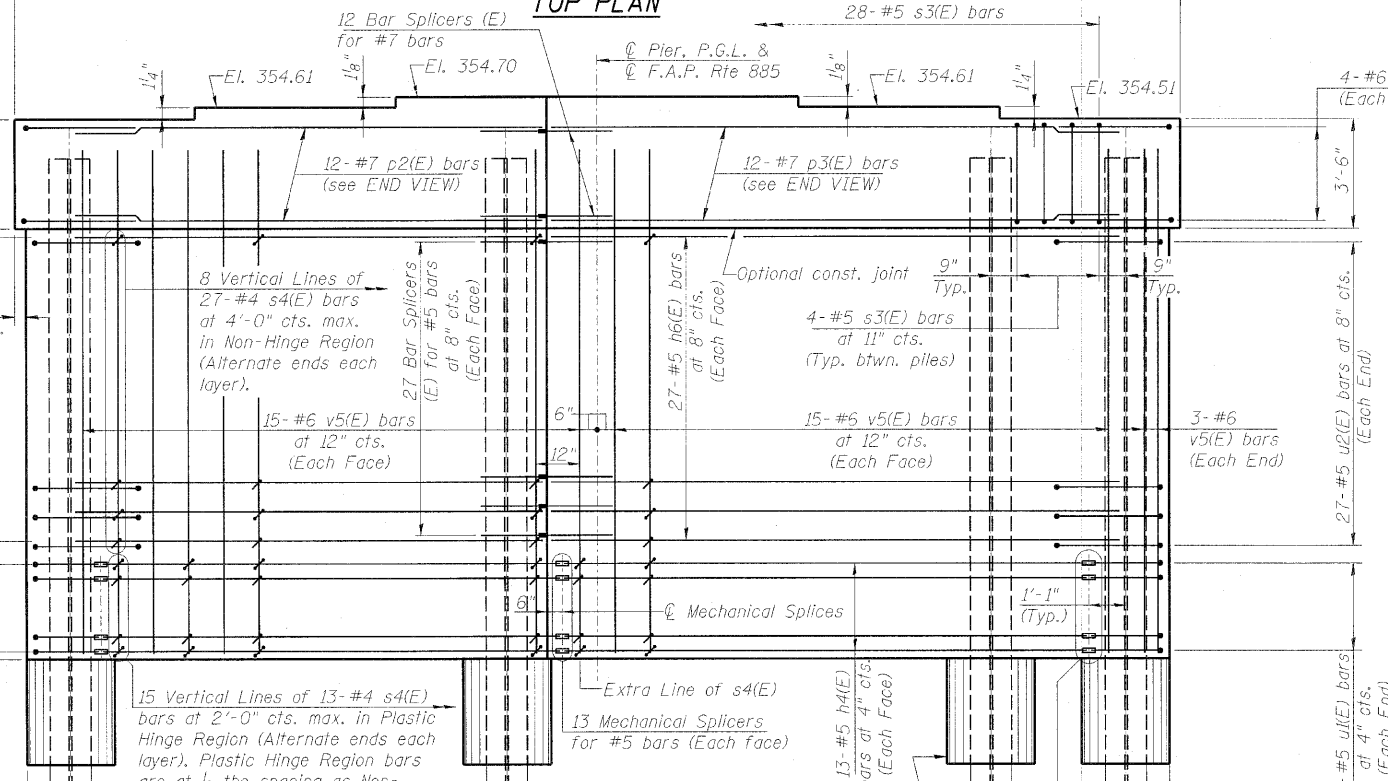
BARS u1(E) & u3(E)



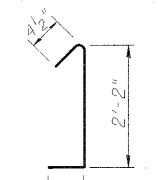
BAR u2(E)



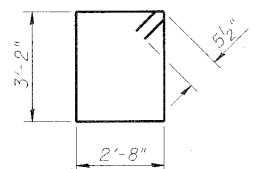
END VIEW



ELEVATION
(Looking South)



BAR s4(E)



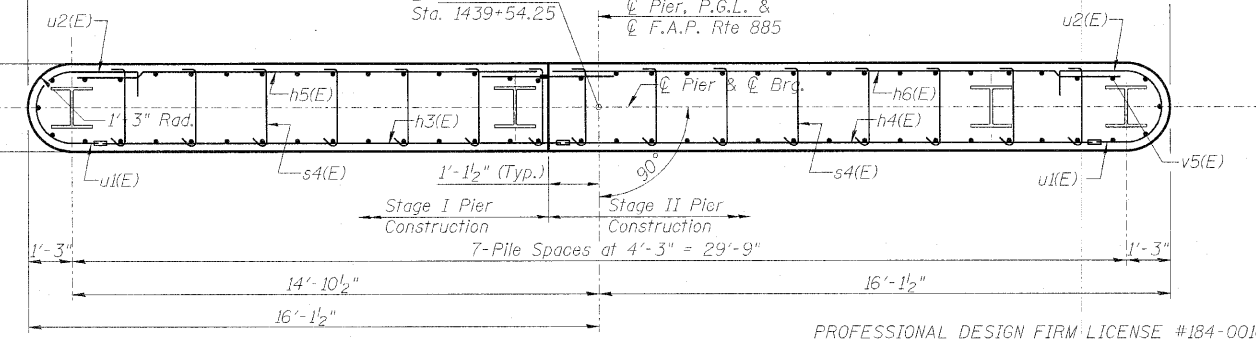
BAR s3(E)

BILL OF MATERIAL (Pier 2)

Bar	No.	Size	Length	Shape
h3(E)	26	#5	13'-2"	—
h4(E)	26	#5	14'-5"	—
h5(E)	54	#5	13'-7"	—
h6(E)	54	#5	15'-10"	—
p2(E)	12	#7	13'-7"	—
p3(E)	12	#7	15'-10"	—
s3(E)	28	#5	12'-7"	□
s4(E)	41	#4	2'-11"	J
u1(E)	26	#5	5'-7"	U
u2(E)	54	#5	11'-7"	U
u3(E)	8	#6	11'-9"	U
v5(E)	66	#6	24'-4"	—
Structure Excavation		Cu. Yd.	57	
Concrete Structures		Cu. Yd.	78.2	
Reinforcement Bars, Epoxy Coated		Pound	7650	
Furnishing Steel Piles, HP 14x89		Foot	320	
Driving Piles		Foot	320	
Concrete Encasement		Cu. Yd.	4.4	

PILE DATA

Type:	HP 14x89
Nominal Required Bearing:	705 kips
Factored Resistance Available:	347 kips
Factored Resistance Available During an Extreme Event I:	666 kips
Est. Length:	40 Ft.
No. Production Piles:	8
No. Test Piles:	



PLAN

**PIER 2
STRUCTURE NO. 076-0029**

PROFESSIONAL DESIGN FIRM LICENSE #184-001084
© Copyright Hanson Professional Services Inc. 2010

HANSON
Hanson Professional Services Inc.

JOB NO. 08H0131	SHEET NO. 24	F.A.P. RTE. 885	SECTION 6B-2	COUNTY Pope	TOTAL SHEETS 48	SHEET NO. 43
DATE 05/21/10	29 SHEETS	CONTRACT NO. 78141				
ILLINOIS FED. AID PROJECT						