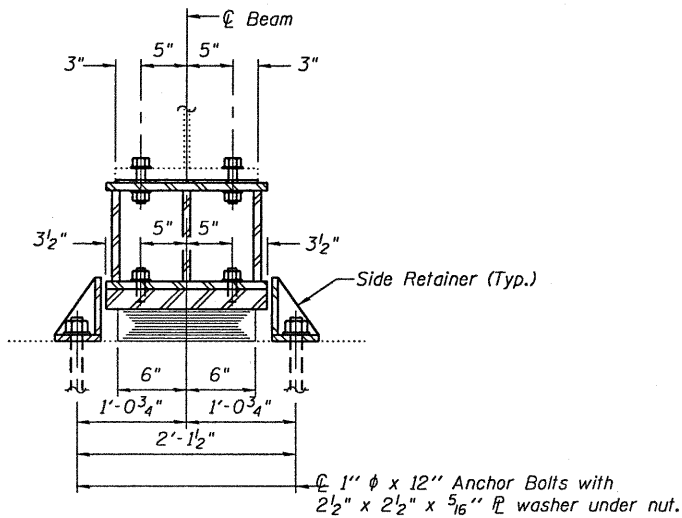


**ELEVATION AT ABUTMENT**

**TYPE I ELASTOMERIC EXP. BRG.**

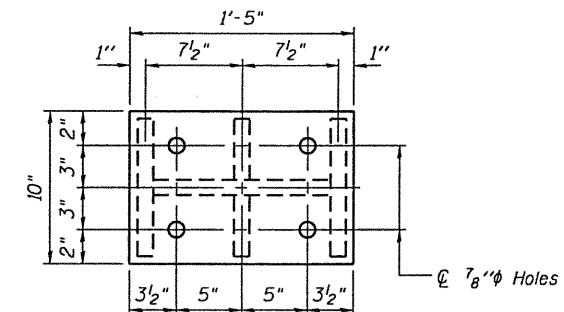


**SECTION A-A**

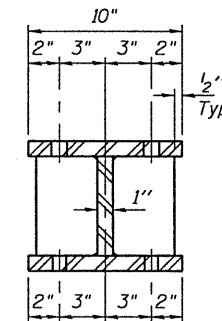
**BEAM REACTIONS**

RE	(K)	40.9
Rt	(K)	39.9
Imp.	(K)	9.3
R (Total)	(K)	90.1

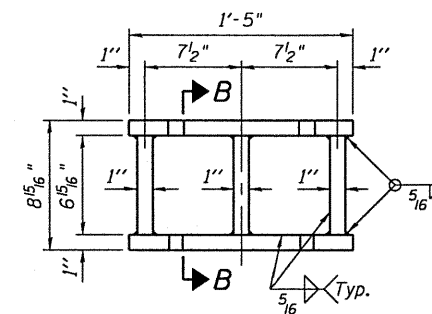
Notes:  
 Diaphragm removal and reinstallation may be required to facilitate drilling holes. Cost included with Furnishing and Erecting Structural Steel.  
 New steel extensions, shim plates and connection bolts are included with Furnishing and Erecting Structural Steel.  
 Prior to ordering any material, the Contractor shall verify in the field all bearing height and shim thickness dimensions. Min. jack capacity = 50 Tons.  
 Anchor bolts shall be ASTM F1554 all-thread (or an Engineer-approved alternate material) of the grade(s) and diameter(s) specified. ASTM A307 Grade C anchor bolts may be used in lieu of ASTM F1554 Grade 36 (Fy=36ksi). The corresponding specified grade of AASHTO M314 anchor bolts may be used in lieu of ASTM F1554.  
 Anchor bolts at fixed bearings may be either cast in place or installed in holes drilled after the supported member is in place.  
 Drilled and set anchor bolts shall be installed according to Article 521.06 of the Standard Specifications.  
 Side retainers shall be included in the cost of Elastomeric Bearing Assembly, Type I.



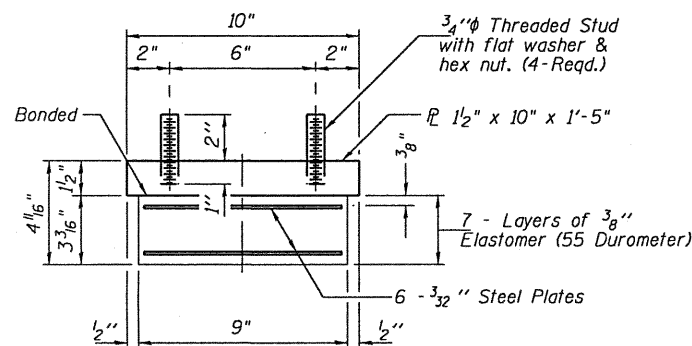
**PLAN TOP AND BOTTOM PLATE**



**SECTION B-B**

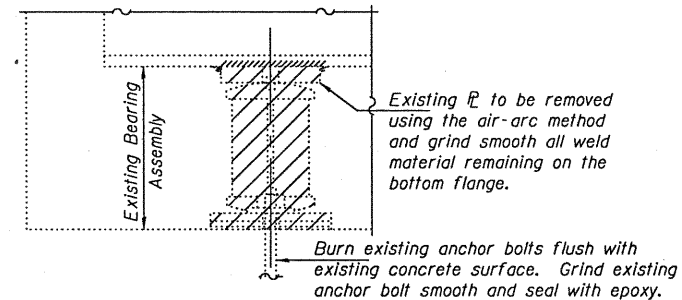


**STEEL EXTENSION DETAIL**



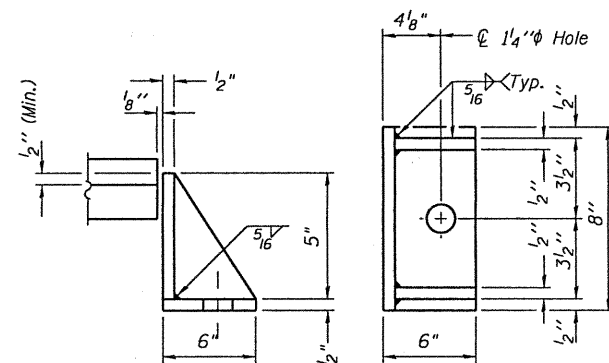
**BEARING ASSEMBLY**

Note:  
 Shim plates shall not be placed under Bearing Assembly.



**EXISTING BEARING REMOVAL DETAIL**

Cost included with Jack and Remove Existing Bearings.



**SIDE RETAINER**

Equivalent rolled angle with stiffeners will be allowed in lieu of welded plates.

**BILL OF MATERIAL**

Item	Unit	Total
Elastomeric Bearing Assembly, Type I	Each	5
Jack and Remove Existing Bearings	Each	5
Furnishing and Erecting Structural Steel	Pound	890
Anchor Bolts 1\"/>		

TYI/REPS 12-03-2008

DESIGNED - A.D.Y.  
 CHECKED - G.G.E.  
 DRAWN - Drew Christopher  
 CHECKED - A.D.Y. G.G.E.

EXAMINED - *Carl Perry*  
 ENGINEER OF STRUCTURAL SERVICES  
 PASSED - *Ralph E. Anderson*  
 ENGINEER OF BRIDGES AND STRUCTURES  
 DATE - NOVEMBER 22, 2010

STATE OF ILLINOIS  
 DEPARTMENT OF TRANSPORTATION

EAST ABUTMENT DETAILS  
 SN 041-0061

SHEET NO. 2 OF 2 SHEETS

F.A. RTE.	SECTION	COUNTY	TOTAL SHEETS	SHEET NO.
57	D9 CM BRIDGE REPAIR 2011-1	Jefferson	15	15
			CONTRACT NO. 78212	
ILLINOIS FED. AID PROJECT				

SLT-99-001-10