

STATE OF ILLINOIS  
DEPARTMENT OF TRANSPORTATION  
DIVISION OF HIGHWAYS  
**PROPOSED  
HIGHWAY PLANS**

F.A.I. RTE.	SECTION	COUNTY	TOTAL SHEETS	SHEET NO.
57	D9 BSMART 2011-1	WILLIAMSON	11	1
		ILLINOIS	CONTRACT NO. 78226	

FOR INDEX OF SHEETS, SEE SHEET NO. 2

**TRAFFIC DATA**

**I-57 TRAFFIC DATA**

2009 ADT = 37,560  
32% TRUCKS

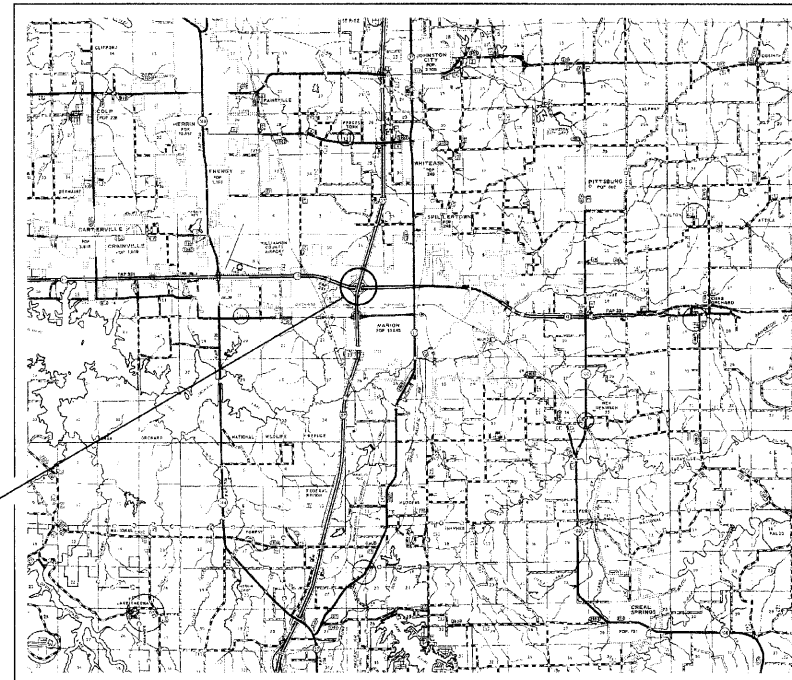
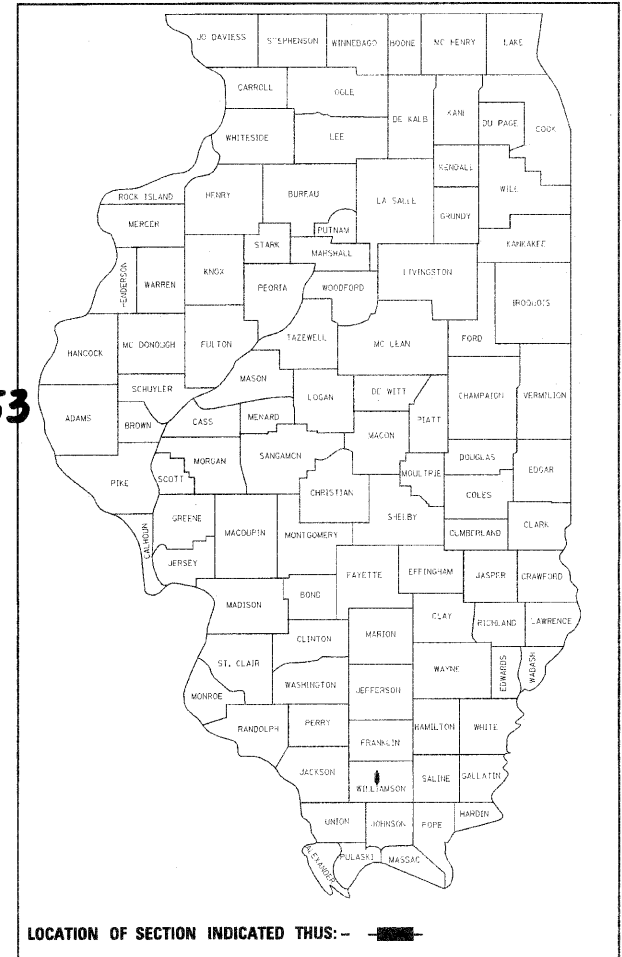
**TOWNSHIPS:**

W. MARION

FAI ROUTE 57  
OVER FAP 331 (IL 13) **PROJECT: IM-057-2(153)053**  
SECTION D9 BSMART 2011-1  
MICROSILICA CONCRETE OVERLAY  
WILLIAMSON COUNTY

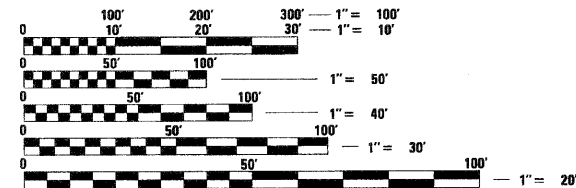
C-99-005-11

D-99-003-11



PROJECT LOCATION  
SN 100-0009 (S.B.)

GROSS LENGTH = 210 FT.  
NET LENGTH = 210 FT.



FULL SIZE PLANS HAVE BEEN PREPARED USING STANDARD ENGINEERING SCALES. REDUCED SIZED PLANS WILL NOT CONFORM TO STANDARD SCALES. IN MAKING MEASUREMENTS ON REDUCED PLANS, THE ABOVE SCALES MAY BE USED.

J.U.L.I.E.  
JOINT UTILITY LOCATION INFORMATION FOR EXCAVATION  
1-800-892-0123  
OR 811

PROJECT ENGINEER T. WAYNE HALSTEAD  
PROJECT MANAGER DAVID PICHE

CONTRACT NO. 78226

STATE OF ILLINOIS  
DEPARTMENT OF TRANSPORTATION  
DIVISION OF HIGHWAYS

SUBMITTED *Oct. 15 20 10*  
*[Signature]*  
DEPUTY DIRECTOR OF HIGHWAYS, REGION ENGINEER

*December 10 20 10*  
*Scott E. Stitt, P.E.*  
acting ENGINEER OF DESIGN AND ENVIRONMENT

*December 10 20 10*  
*Christine M. Reed*  
DIRECTOR OF HIGHWAYS, CHIEF ENGINEER

**PRINTED BY THE AUTHORITY  
OF THE STATE OF ILLINOIS**