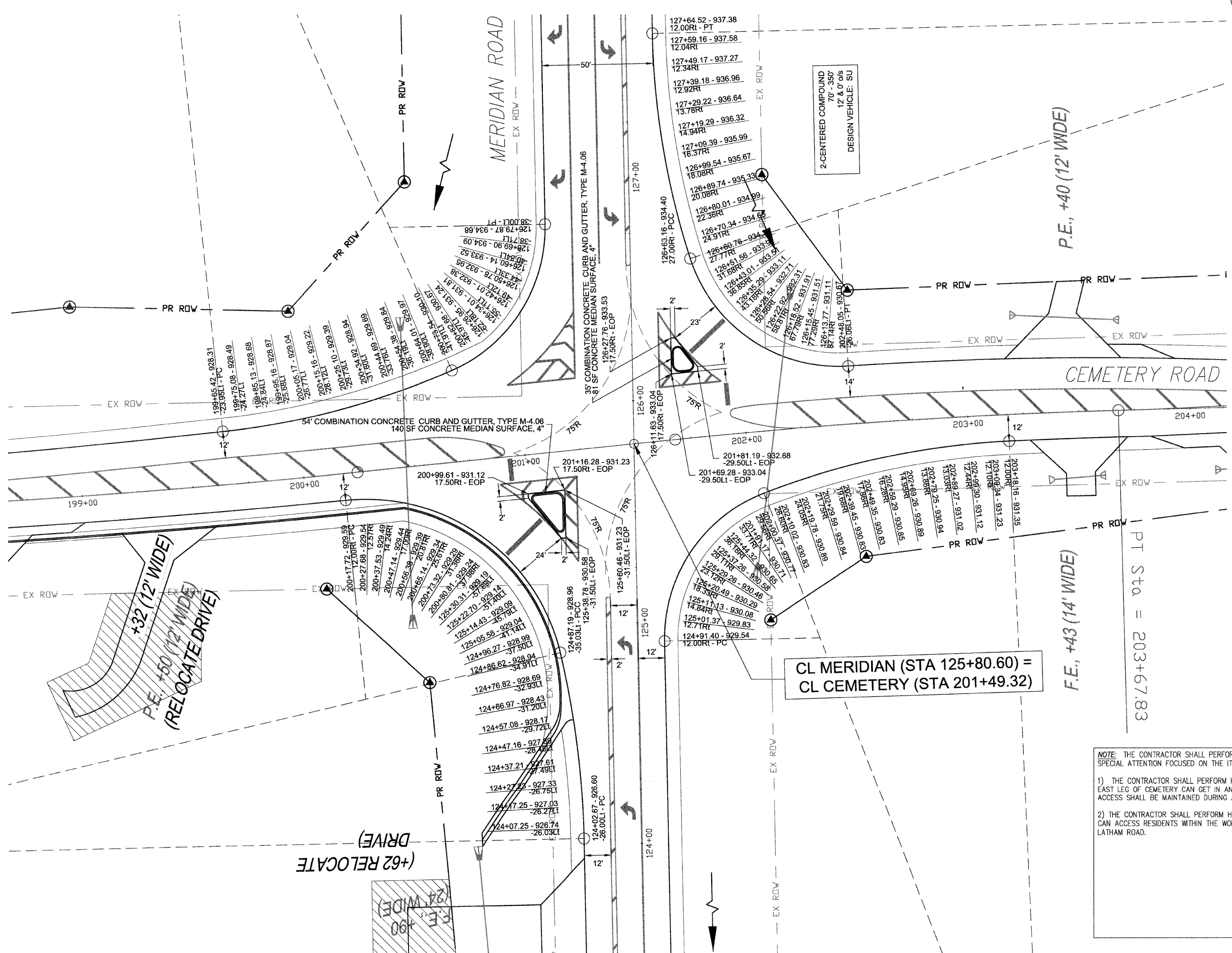




SCALE: 1"=20'



**NOTE:** THE CONTRACTOR SHALL PERFORM THE WORK AT THE CEMETERY INTERSECTION WITH SPECIAL ATTENTION FOCUSED ON THE ITEMS NOTED BELOW:

- 1) THE CONTRACTOR SHALL PERFORM HIS WORK IN SUCH A WAY THAT RESIDENTS ON THE EAST LEG OF CEMETERY CAN GET IN AND OUT VIA THE SOUTH LEG OF MERIDIAN. THIS ACCESS SHALL BE MAINTAINED DURING AND AFTER WORKING HOURS.
- 2) THE CONTRACTOR SHALL PERFORM HIS WORK IN SUCH A WAY THAT EMERGENCY VEHICLES CAN ACCESS RESIDENTS WITHIN THE WORK LIMITS OF THE INTERSECTION IMPROVEMENT FROM LATHAM ROAD.