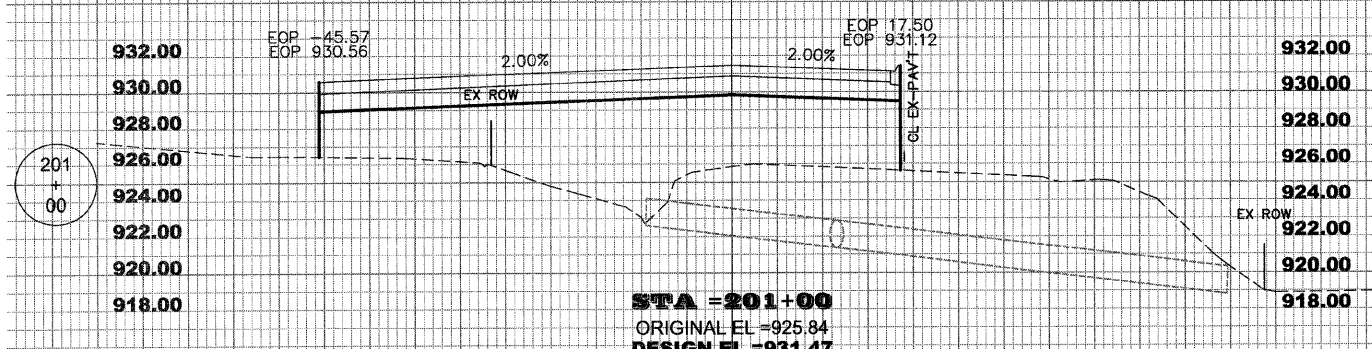
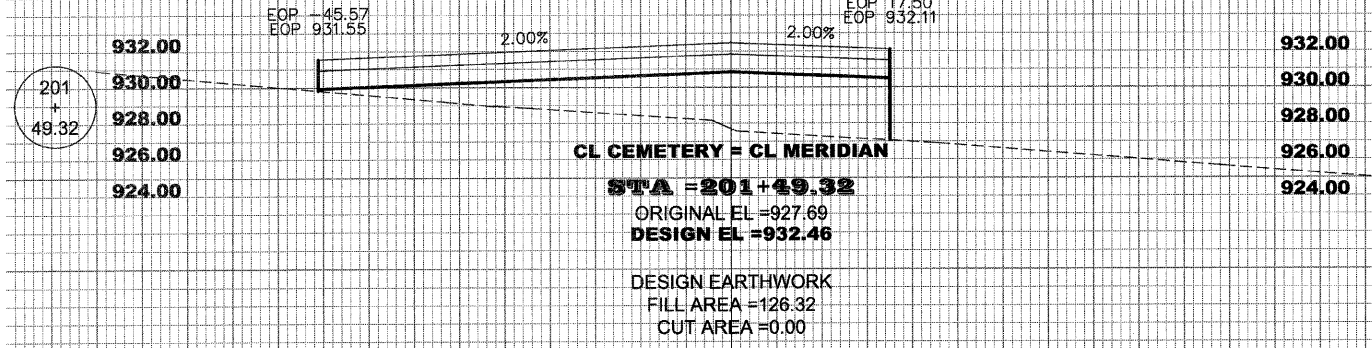
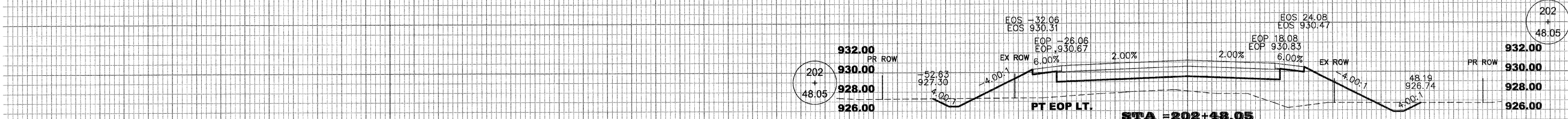
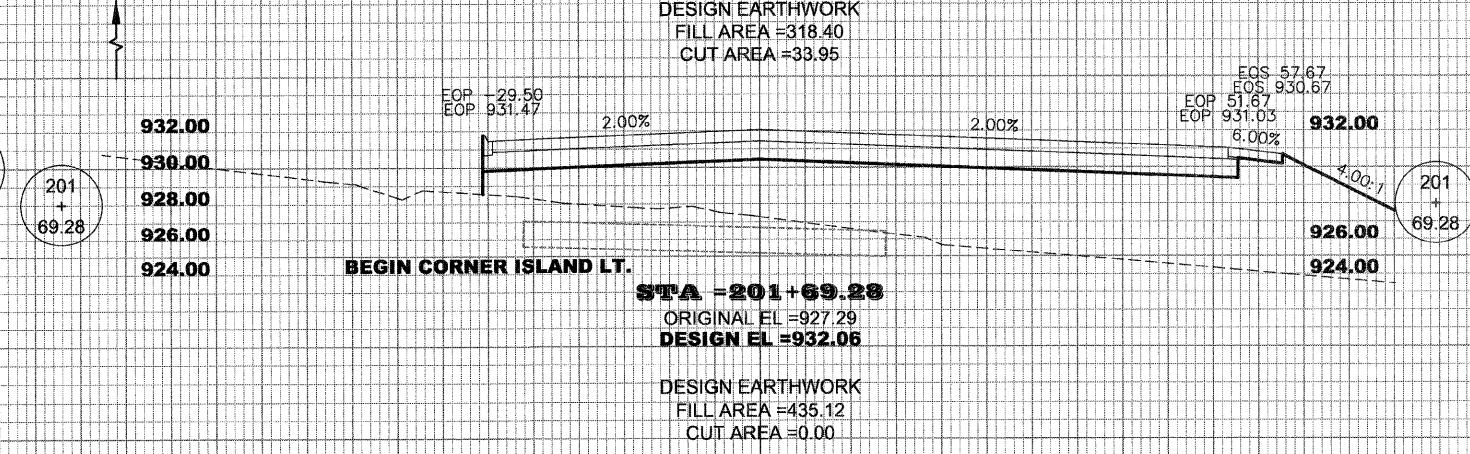
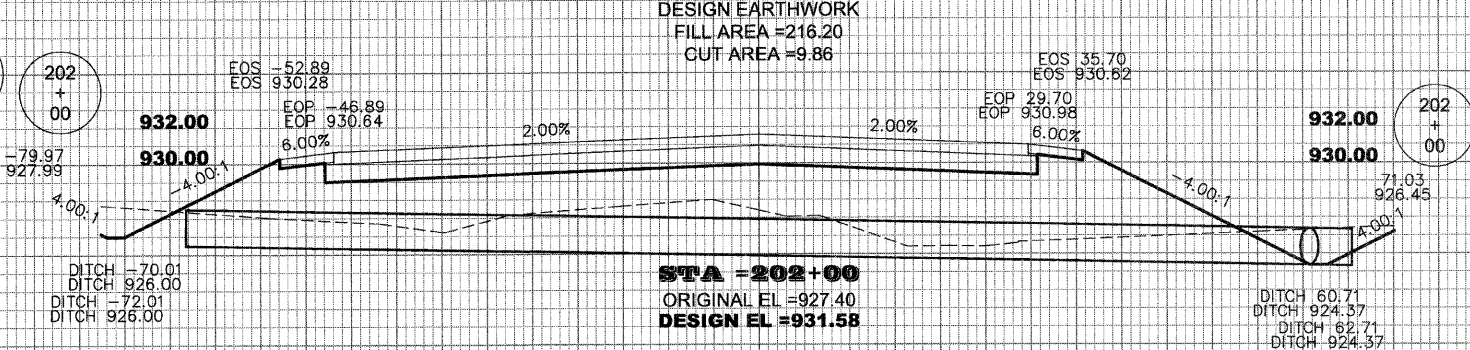
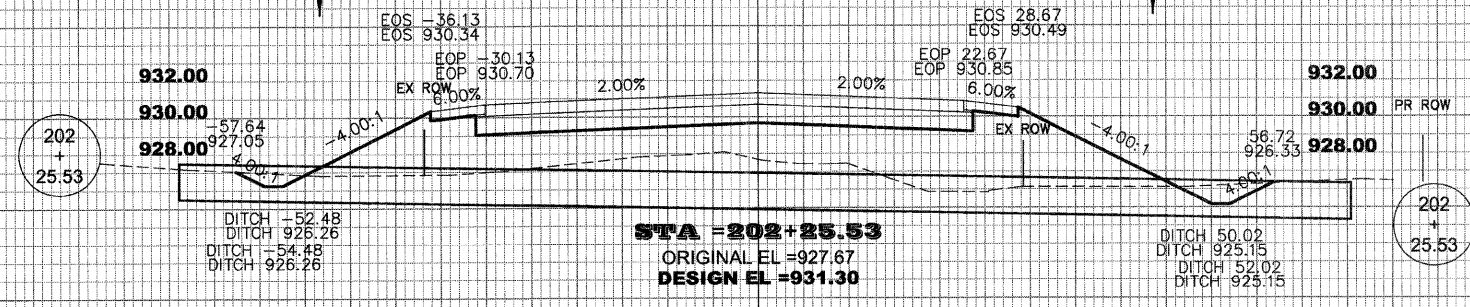
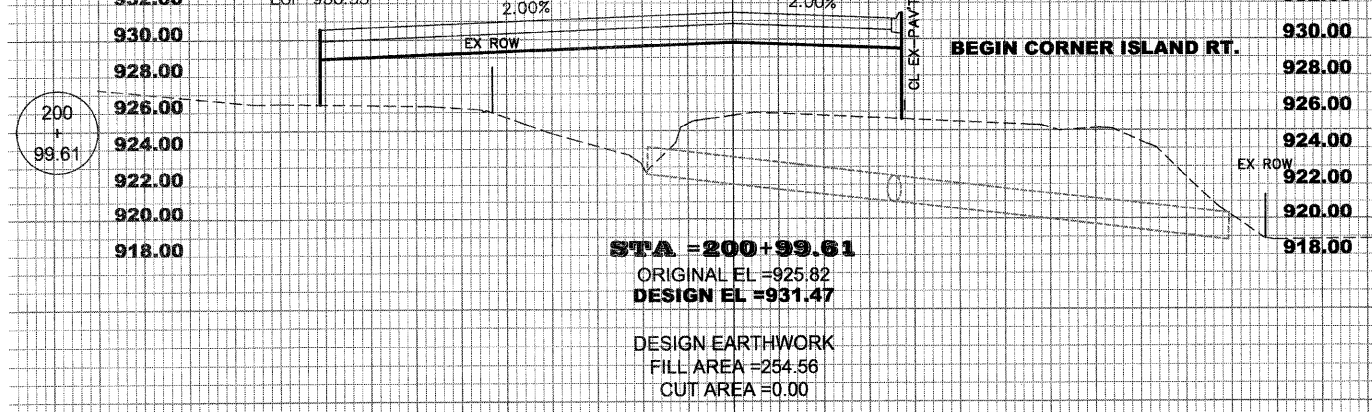


70.0 60.0 50.0 40.0 30.0 20.0 10.0 CL 10.0 20.0 30.0 40.0 50.0 60.0 70.0 80.080.0 70.0 60.0 50.0 40.0 30.0 20.0 10.0 CL 10.0 20.0 30.0 40.0 50.0 60.0 70.0



SEE MERIDIAN CROSS-SECTIONS  
 FOR COMPLETION OF EARTHWORK  
 (VERTICAL LINE FOR CALCULATIONS ONLY)



70.0 60.0 50.0 40.0 30.0 20.0 10.0 CL 10.0 20.0 30.0 40.0 50.0 60.0 70.0 80.080.0 70.0 60.0 50.0 40.0 30.0 20.0 10.0 CL 10.0 20.0 30.0 40.0 50.0 60.0 70.0